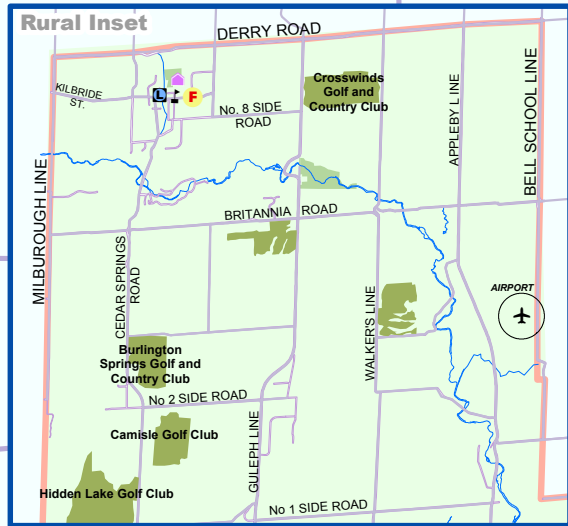


CITY WIDE MAP

For North Burlington
see Rural Inset



For further mapping information including Ward Boundaries, please visit burlington.ca and follow the mapping link to Interactive Mapping.



Legend

- | | | | | | | |
|------------------|-----------------------------------|------------------|-------------------------|----------------------------|---------------------|--|
| Freeways | Golf Course | Airport | City Hall | Library | French Elementary | Charles Sturt University & Centre for Skills Development |
| Major Roads | Hydro Land | Art Centre | Discovery Landing | Post Office | French Secondary | EDU CARE College of Canada & Halton Business Institute |
| Major Creeks | Major Commercial Area | Arena | Fire Hall | Police | Public Elementary | Halton Industry Education Council |
| RBG_Trails 2005 | Major Parks and Open Space | Bus Terminal | GO/VIA Transit Station | Research Centre | Public Secondary | McMaster University |
| Waterfront_Trail | Residential (including Corridors) | Courthouse | Hospital / Urgent Care | Visitor Information Centre | Catholic Elementary | DeGroot School of Business |
| Downtown | Provincial Greenbelt Plan | Community Centre | 1 - Joseph Brant Museum | Catholic Secondary | | |
| Employment Area | | | 2 - Ireland House | | | |