

Grindstone Creek Erosion Control Project

Unsworth Avenue to Sumach Drive

Public Information Centre

January 25, 2023

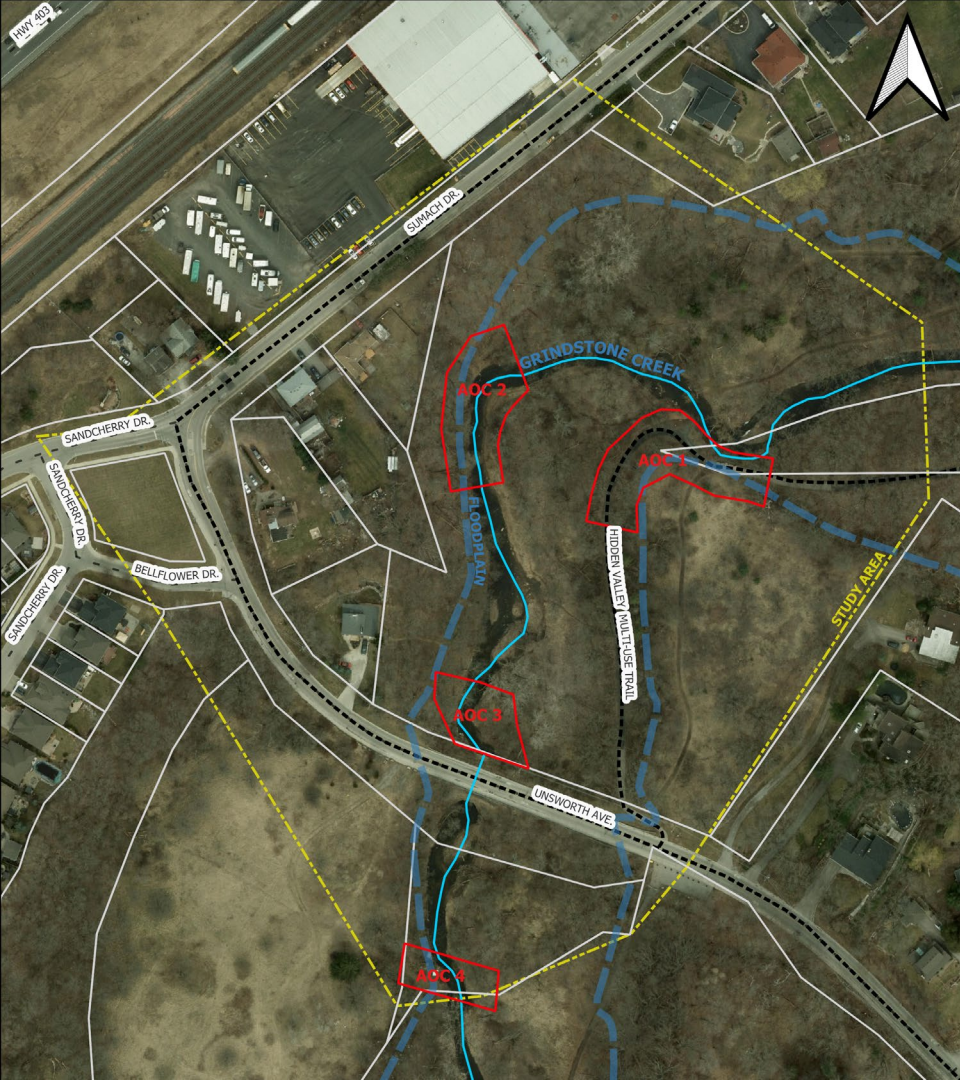


First Nations Land Acknowledgement

Burlington as we know it today is rich in history and modern traditions of many First Nations and the Métis. From the Anishinaabeg to the Haudenosaunee, and the Métis— our lands spanning from Lake Ontario to the Niagara Escarpment are steeped in Indigenous history.

The territory is mutually covered by the “Dish with One Spoon Wampum Belt Covenant,” an agreement between the Iroquois Confederacy, the Ojibway, and other allied Nations to peaceably share and care for the resources around the Great Lakes.

We would like to acknowledge that the land on which we gather is part of the Treaty Lands and Territory of the “Mississaugas of the Credit.”



Overview of Content

- Project History
- Proposed Works
- Construction Schedule

Project webpage:

www.burlington.ca/GrindstoneCreek/Unsworth

Project History

- Municipal Class Environmental Assessment study was completed in 2020:
 - study was initiated due to erosion concerns
 - four areas of erosion concern were identified
 - alternatives were selected and evaluated
 - Public Information Centre was held February 2020
 - detailed design was developed and approved by agencies

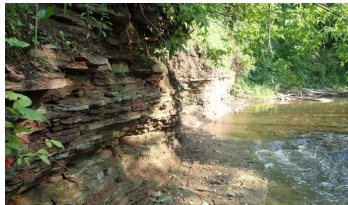
Existing Erosion Issues and Concerns



AOC 1 - walking trail in park is at risk



AOC 1 - bank erosion concerns



AOC 2 - eroding steep valley wall; risk to property



AOC 2 - erosion along valley wall toe; risk to property



AOC 3 - armourstone slope protection is outflanked



AOC 4 - WSC gauge station

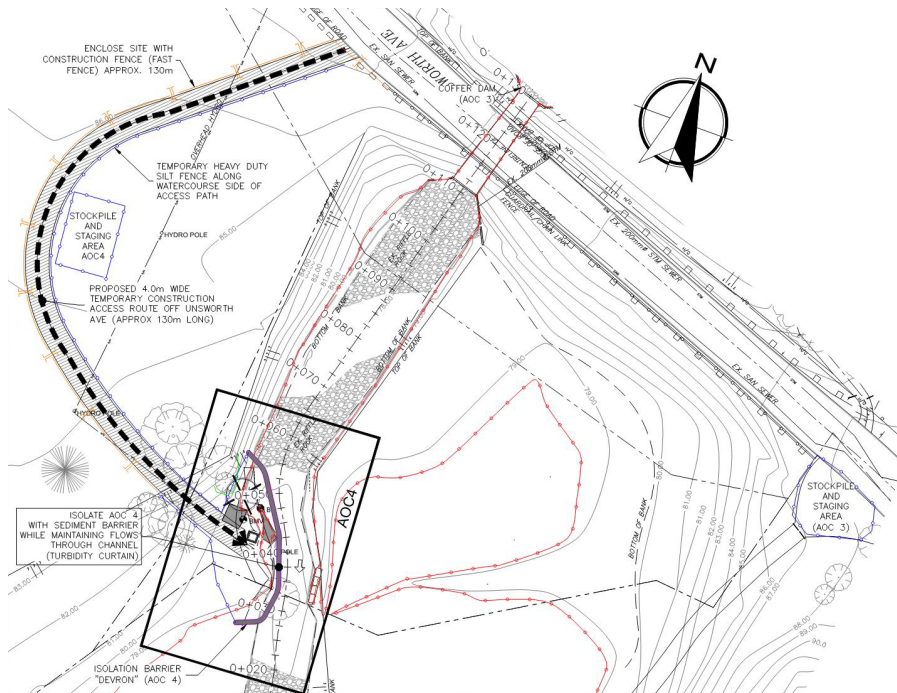


AOC 4 - failing bank protection



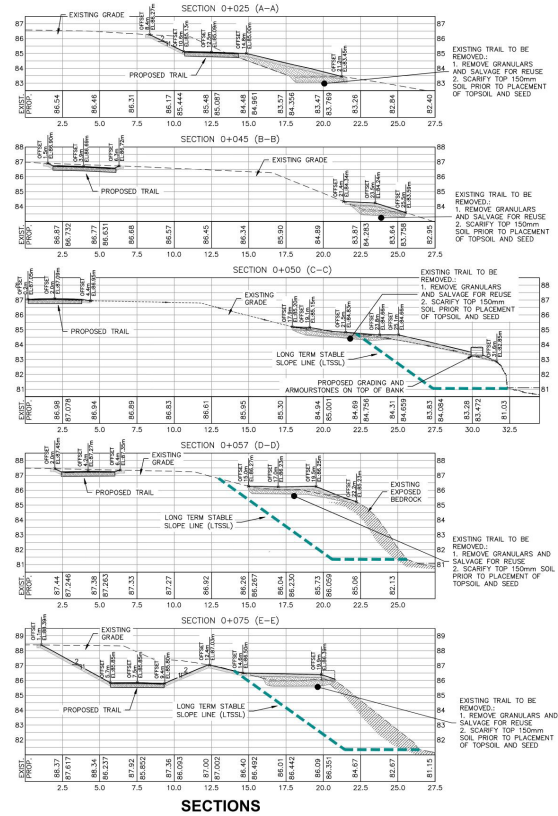
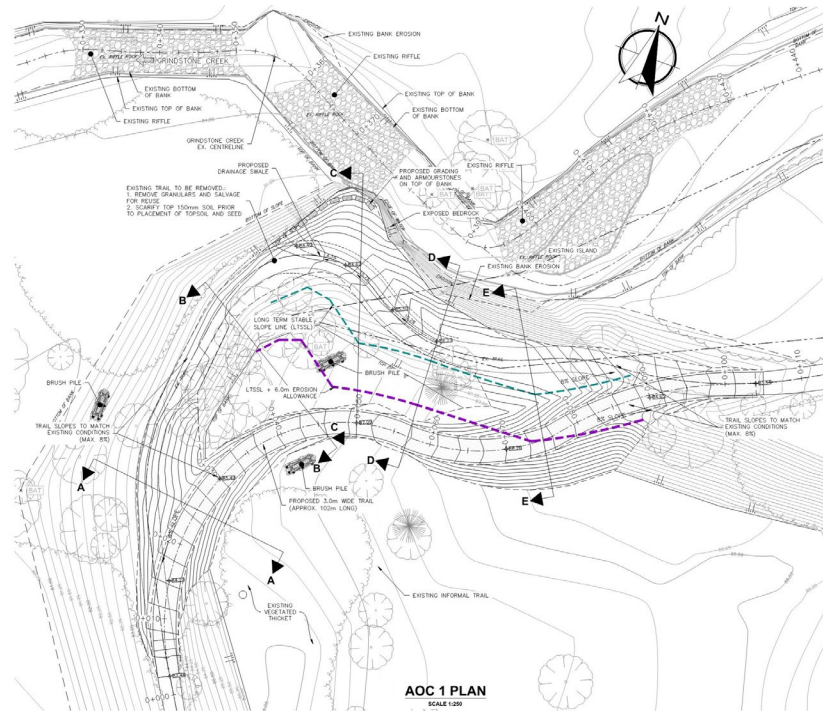
AOC 3 - failing erosion control

Construction Access, Tree Removals, and Staging

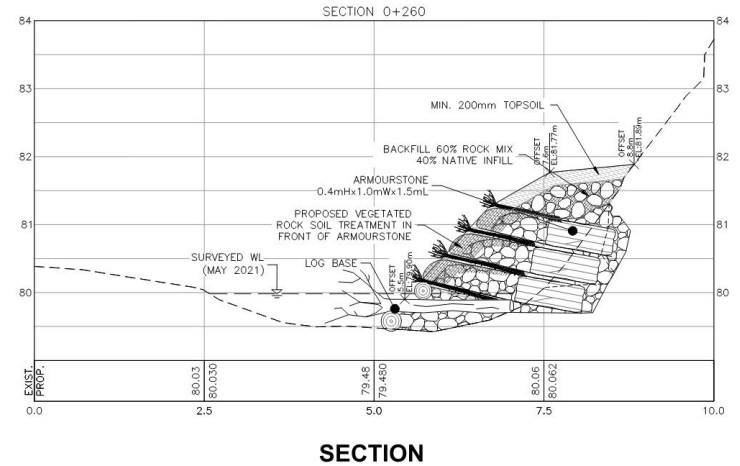
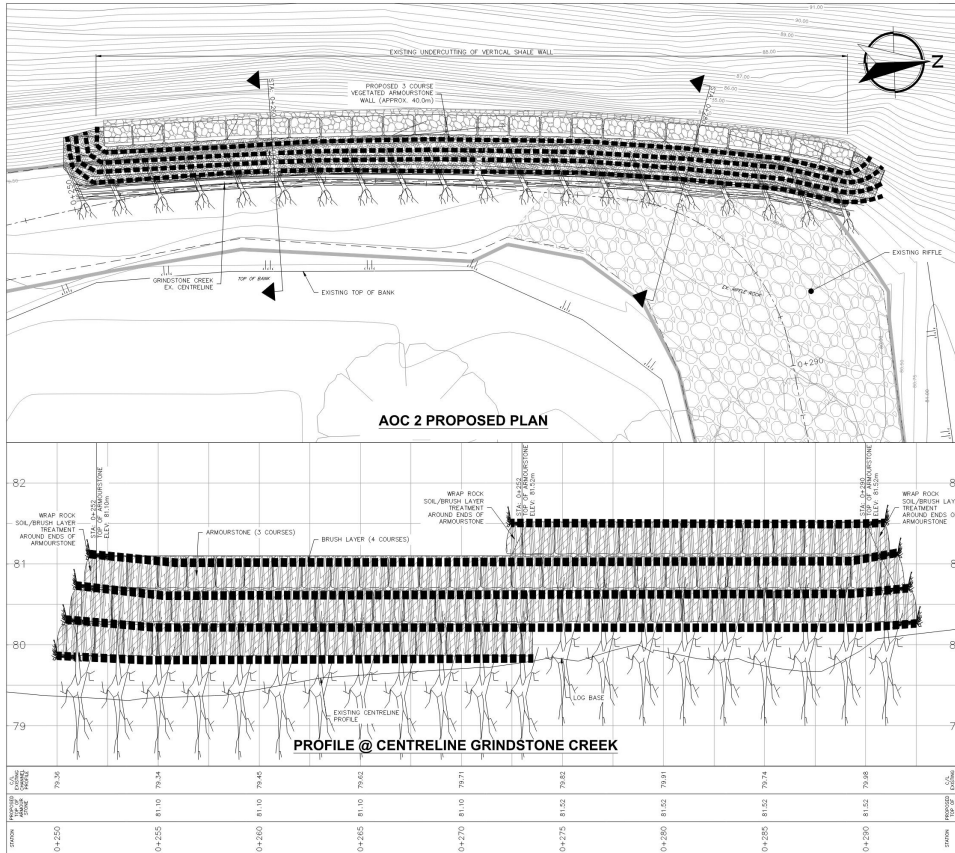


- Construction access from Unsworth Avenue
- Stockpile on site and parking area

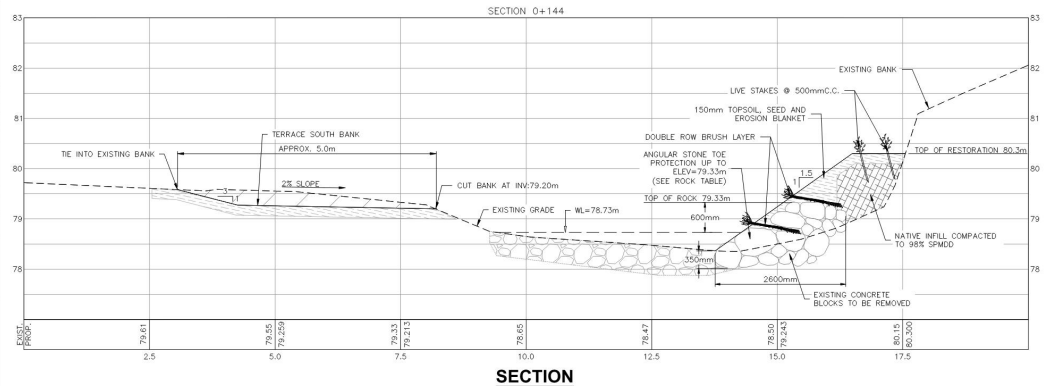
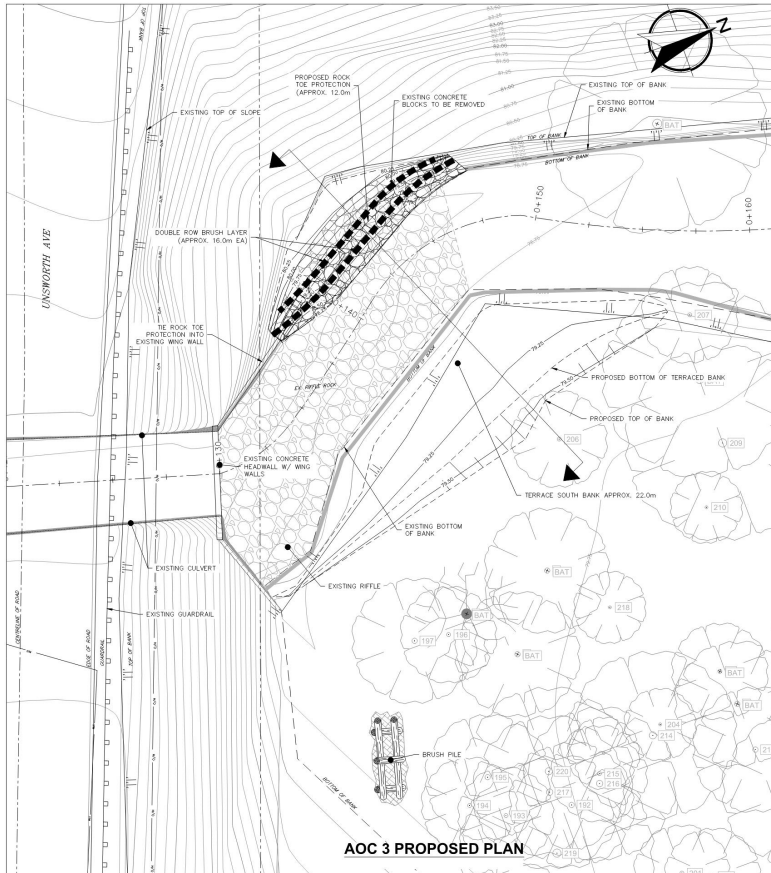
Area 1: Relocate Path Away From Edge of Bank



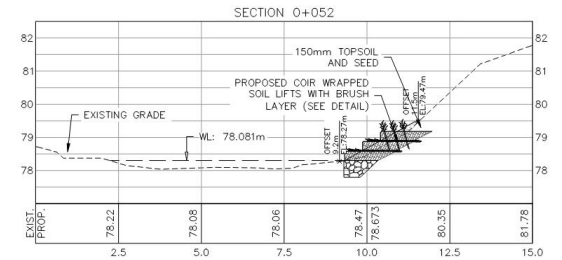
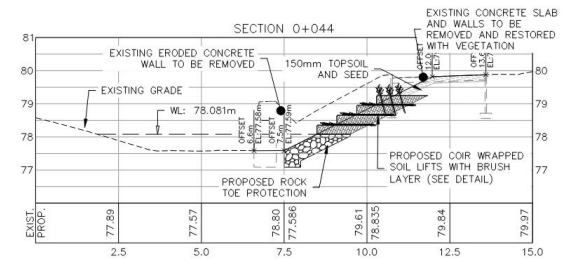
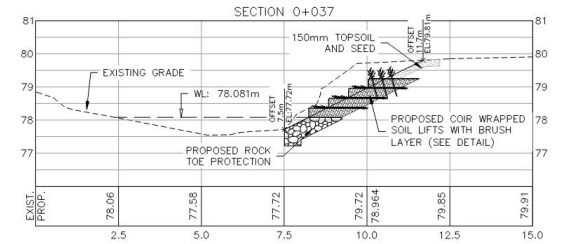
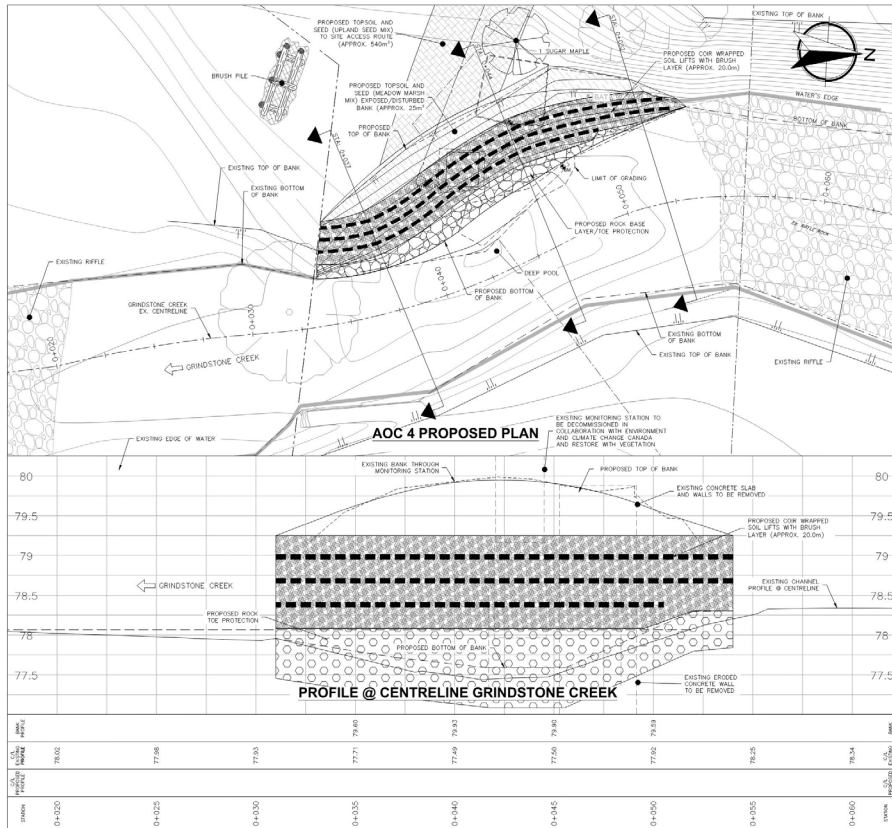
Area 2: Protect Base of Valley Wall from Erosion



Area 3: Protect Base of Valley Wall from Erosion



Area 4: Remove Gauging Station and Concrete; Restore Banks



SECTION

What to Expect

- Experienced contractor
- Construction noise: Monday to Friday between 7 a.m. and 7 p.m.
- Eighteen trees will be removed prior to construction
- Temporary trail closure to protect public from machinery
- Installation of tree protection and erosion control measures adjacent to construction access routes
- Stockpiles of material

What to Expect

During construction:

- no road closures
- closure of Hidden Valley Multi-use Trail
- machinery traffic
- road cleaning

What to Expect

After construction:

- restoration:
 - 82 trees, 410 shrubs
 - 2 bat habitats
 - 7 small mammal shelters (brush piles)
- removal of tree protection and erosion control measures
- reopening of trails

Construction Schedule

- Tree removal (18): between January 1 and March 31, 2023
- Mobilization and site preparation: June 2023
- Construction begins July 1, 2023:
- After construction:
 - revegetation
 - demobilization

If you would like more information, or have any questions or comments, please contact:

Arif Shahzad, M. Eng., P. Eng.
Senior Project Manager
City of Burlington
426 Brant Street, P.O. Box 5013
Burlington, ON L7R 3Z6
905-335-7600 ext. 7486
Arif.Shahzad@burlington.ca

Mariëtte Pushkar, M.Sc., P.Geo.
Project Manager
Matrix Solutions Inc.
171 Victoria St N.
Kitchener, ON N2H 5C52
226-220-3835
mpushkar.@matrix-solutions.com

