

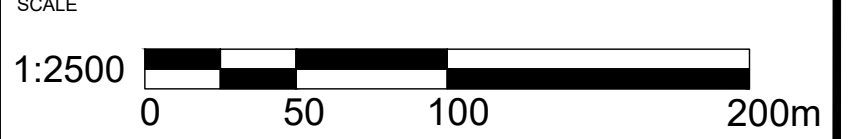
LEGEND

- 1678 Tree tag
- Tree for Preservation*
- Tree for Preservation Requiring Injury Mitigation
- Tree for Removal

* Trees #475, 622, and 623 are dead/dying ash trees identified for retention as snag habitat, to be confirmed with City

Notes: Scale shown is for an 36" x 24" page. For illustrative purposes. Do not scale.

№	REVISIONS	DATE	BY:
6	ISSUED FOR SUBMISSION	2025/11/27	DW
5	ISSUED FOR SUBMISSION	2025/03/07	DW
4	ISSUED FOR SUBMISSION	2025/02/28	DW
3	ISSUED FOR SUBMISSION	2024/05/03	DW
2	ISSUED FOR SUBMISSION	2023/05/03	MU
1	ISSUED FOR SUBMISSION	2020/01/29	MU



NORTH ARROW

CERTIFIED ARBORIST
ISA
SHANE JOEBBER
#CN-1746AM

SEAL



CLIENT
EVERGREEN COMMUNITY LTD.

PROJECT
EVERGREEN BURLINGTON, ON

SHEET TITLE
TREE INVENTORY AND PRESERVATION PLAN

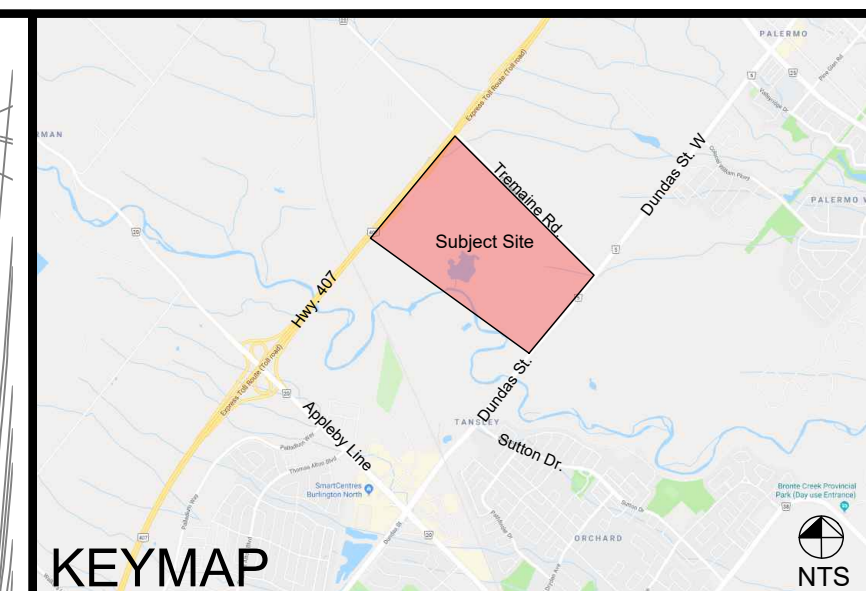
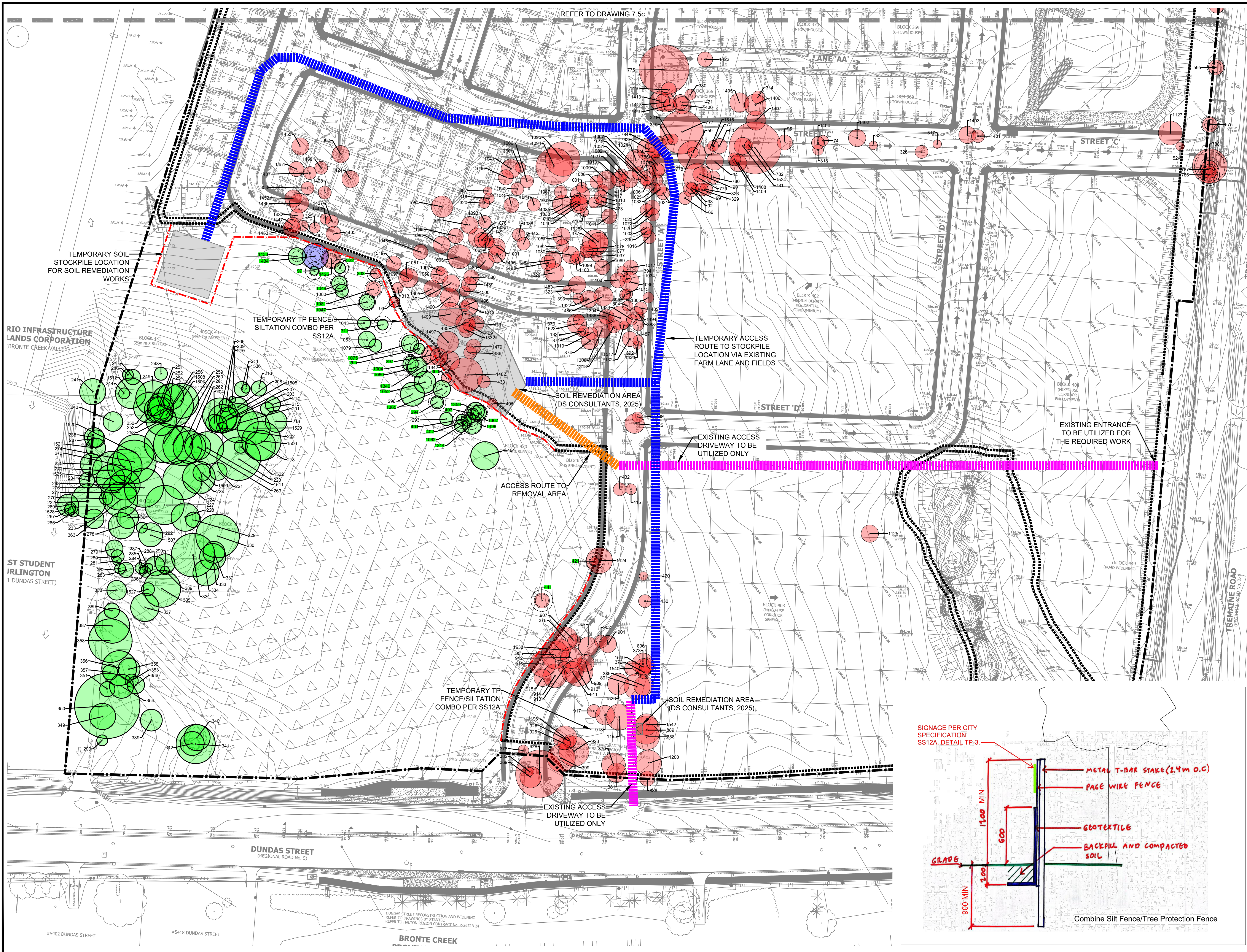
DESIGN BY: ... PROJECT №: 212113

DRAWN BY: MB FIGURE №:

CHECKED BY: MU

DATE: 26 November 2025

7.5a

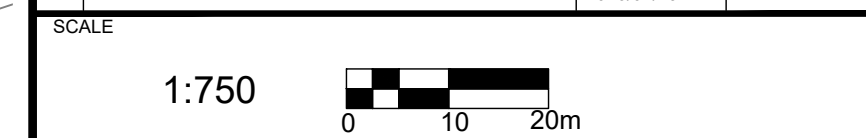


- LEGEND**
- 1678 Tree tag
 - Tree for Preservation*
 - Tree for Preservation Requiring Injury Mitigation
 - Tree for Removal
 - Critical Root Zone (CRZ) Per SS12A
 - Minimum Tree Protection Zone (MTPZ) Per SS12A
 - Drawing Match Lines
 - Silt Fence to be Installed Prior to Bulk Earthworks
 - Combined Silt Fence and Tree Protection Fence to be Installed Prior to Soil Remediation

* Trees #475, 622, and 623 are dead/dying ash trees identified for retention as snag habitat, to be confirmed with City

Notes: Scale shown is for an 81" x 24" page. For illustrative purposes. Do not scale.

NO	REVISIONS	DATE	BY:
6	ISSUED FOR SUBMISSION	2025/11/27	DW
5	ISSUED FOR SUBMISSION	2025/03/07	DW
4	ISSUED FOR SUBMISSION	2025/02/28	DW
3	ISSUED FOR SUBMISSION	2024/05/03	DW
2	ISSUED FOR SUBMISSION	2023/05/03	MU
1	ISSUED FOR SUBMISSION	2020/01/29	MU



CERTIFIED ARBOREST
ISA
SHANE JOEBER
ICN-1746AM



CLIENT: EVERGREEN COMMUNITY LTD.

PROJECT: EVERGREEN BURLINGTON, ON

SHEET TITLE: TREE INVENTORY AND PRESERVATION PLAN FOR SOIL REMEDIATION

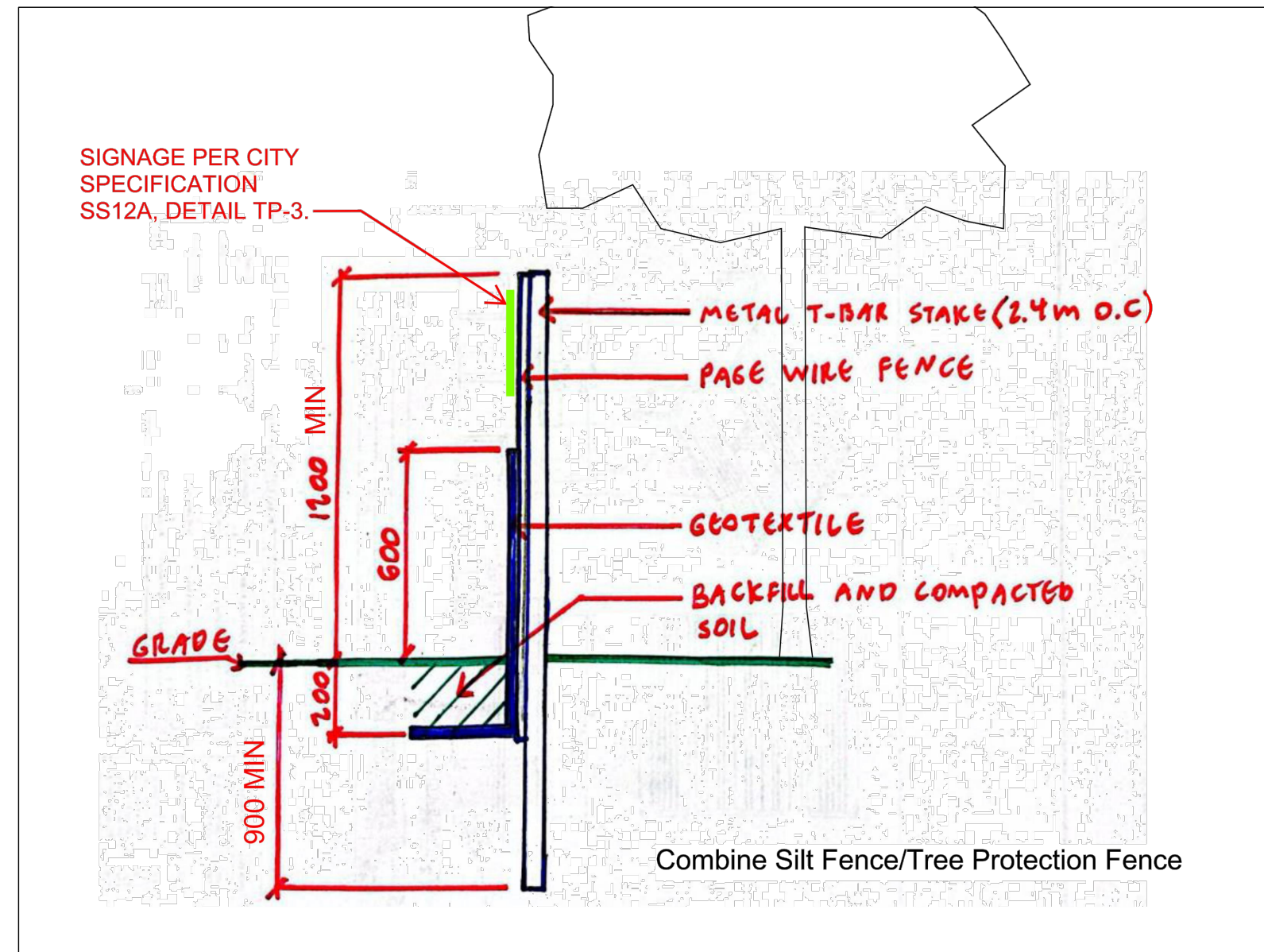
DESIGN BY: ... PROJECT NO: 212113

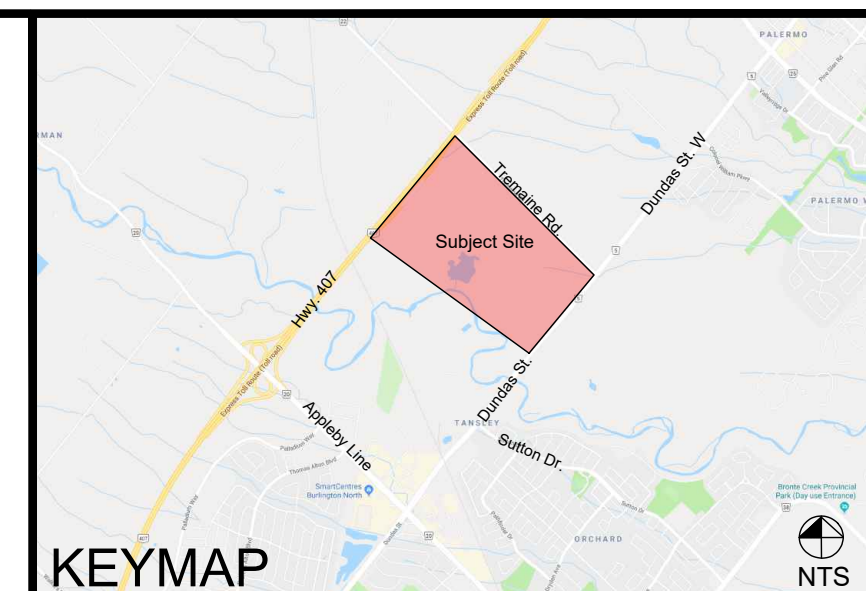
DRAWN BY: JA FIGURE NO:

CHECKED BY: MU

DATE: 26 November 2025

7.5b





- LEGEND**
- 1678 Tree tag
 - Tree for Preservation*
 - Tree for Preservation Requiring Injury Mitigation
 - Tree for Removal
 - Critical Root Zone (CRZ) Per SS12A
 - Minimum Tree Protection Zone (MTPZ) Per SS12A
 - Drawing Match Lines
 - Silt Fence to be Installed Prior to Bulk Earthworks
 - Combined Silt Fence and Tree Protection Fence to be Installed Prior to Bulk Earthworks

* Trees #475, 622, and 623 are dead/dying ash trees identified for retention as snag habitat, to be confirmed with City

Notes: Scale shown is for an 36" x 24" page. For illustrative purposes. Do not scale.

NO	REVISIONS	DATE	BY
6	ISSUED FOR SUBMISSION	2025/11/27	DW
5	ISSUED FOR SUBMISSION	2025/03/07	DW
4	ISSUED FOR SUBMISSION	2025/02/28	DW
3	ISSUED FOR SUBMISSION	2024/05/03	DW
2	ISSUED FOR SUBMISSION	2023/05/03	MU
1	ISSUED FOR SUBMISSION	2020/01/29	MU

SCALE
1:750
0 10 20m

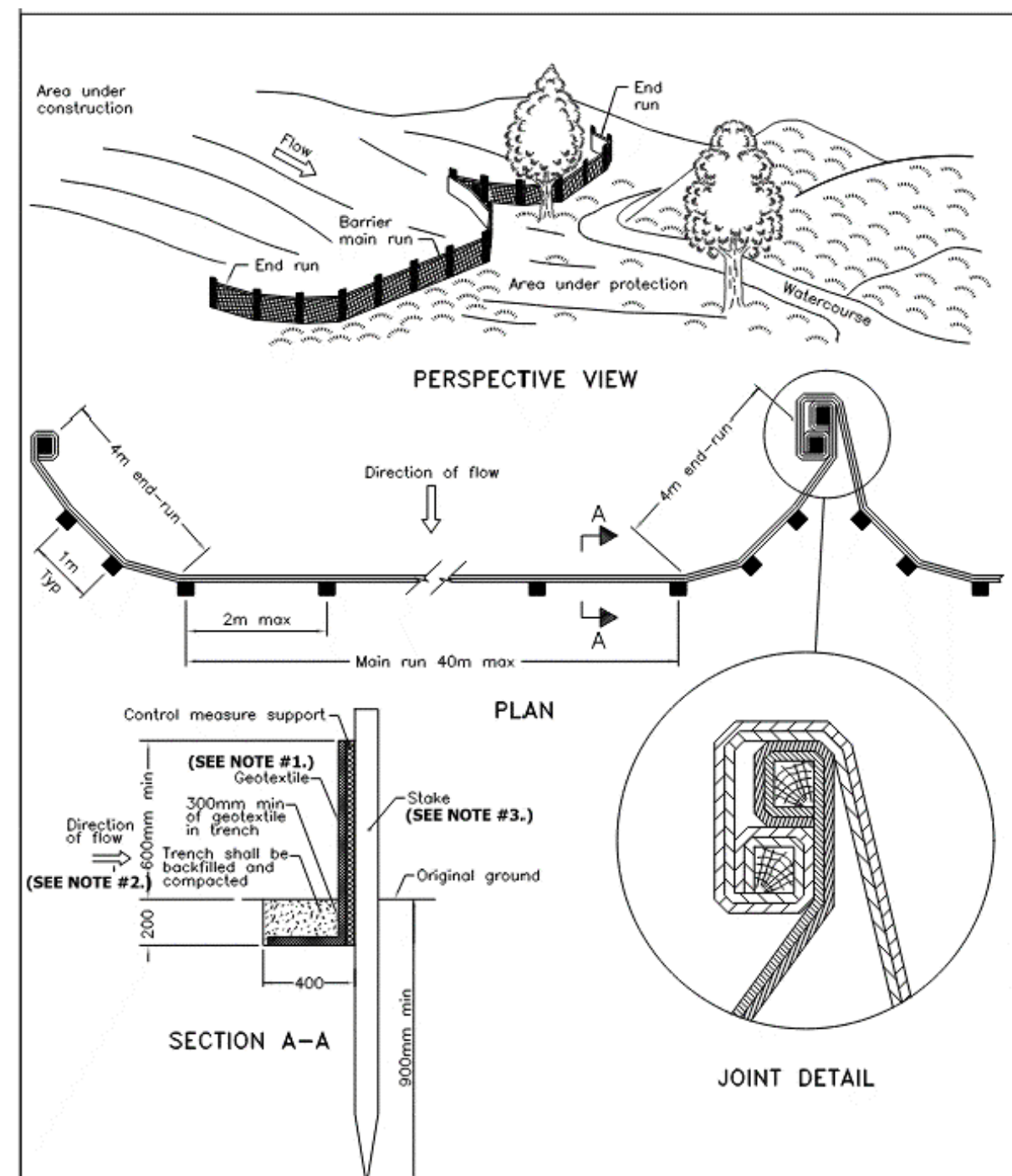
NORTH ARROW

CLIENT
EVERGREEN COMMUNITY LTD.

PROJECT
EVERGREEN BURLINGTON, ON

SHEET TITLE
TREE INVENTORY AND PRESERVATION PLAN

DESIGN BY: ...	PROJECT NO: 212113
DRAWN BY: MB	FIGURE NO: 7.5d
CHECKED BY: MU	
DATE: 26 November 2025	



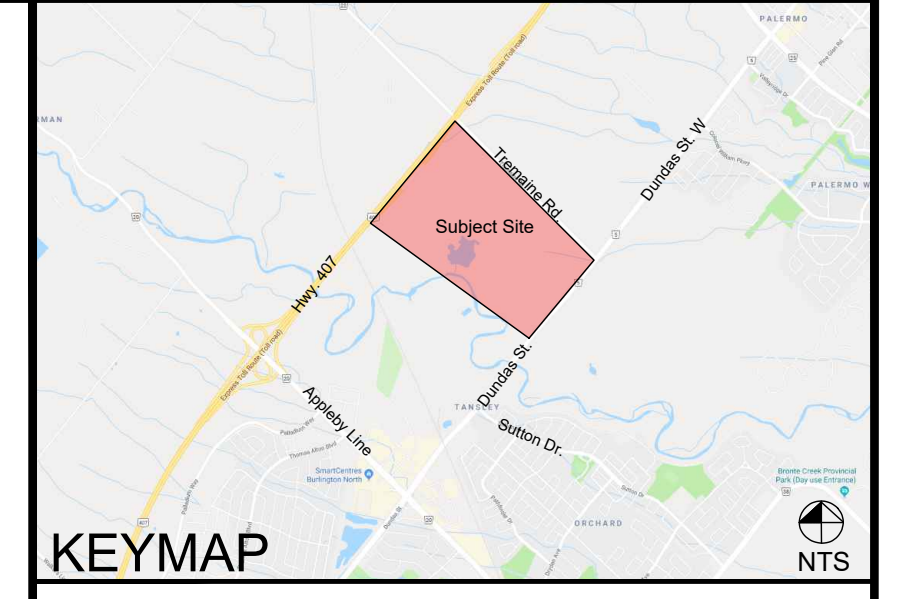
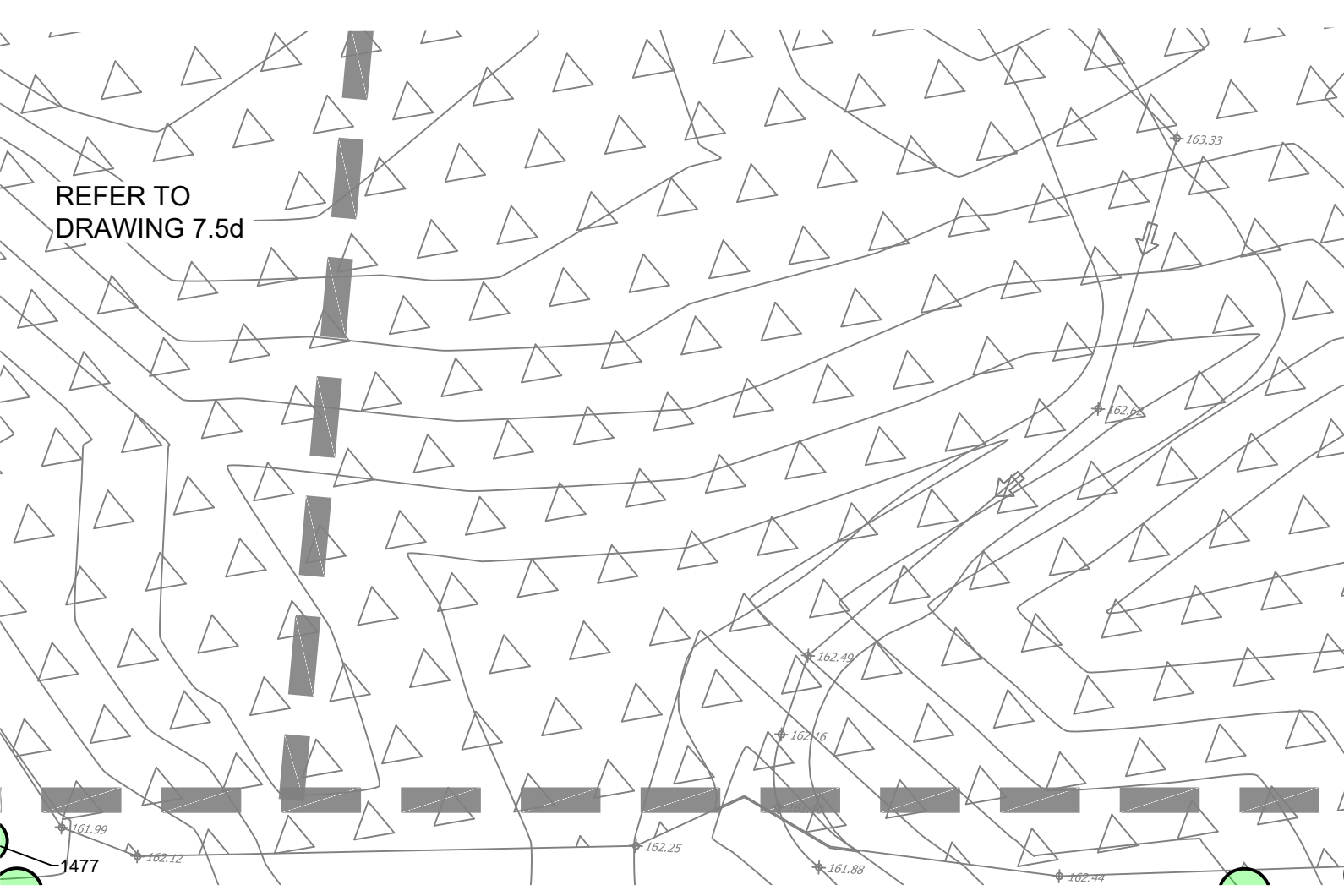
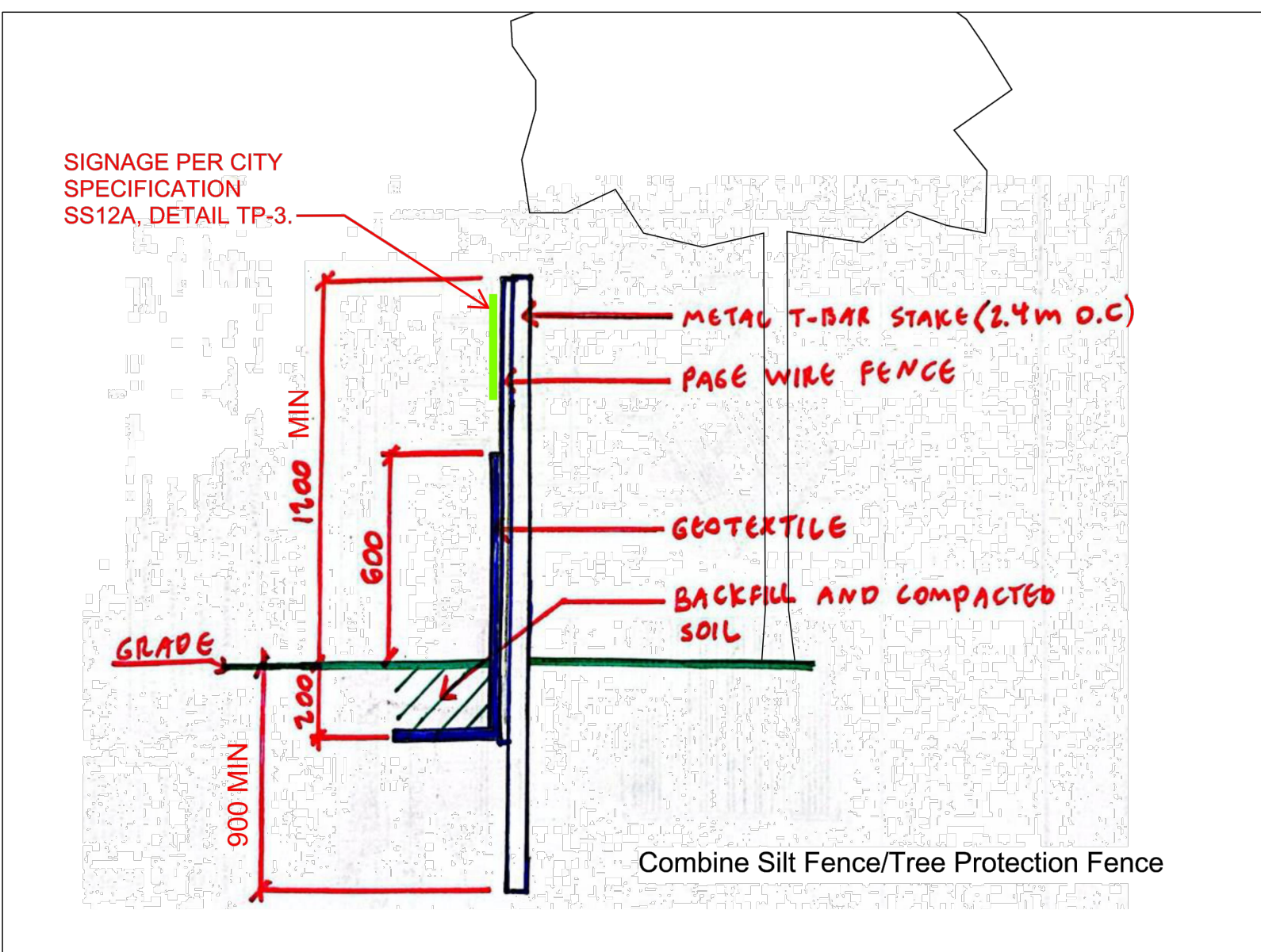
NOTE:
A All dimensions are in millimetres unless otherwise shown.

ONTARIO PROVINCIAL STANDARD DRAWING Nov 2021 Rev 3

HEAVY-DUTY SILT FENCE BARRIER

OPSD 219.130
(MODIFIED - SEE NOTES)

- NOTES:**
- NON-WOVEN GEOTEXTILE FOR SILT BARRIER TO BE IMPLEMENTED.
 - IN LOCATIONS OF TREE PRESERVATION (REFER TO TREE INVENTORY AND PRESERVATION PLAN BY BEACON), 1200mm MIN. OVERALL HEIGHT TO BE IMPLEMENTED BY ADDING 600mm MIN. ORANGE PLASTIC WEB SNOW FENCING IN LOCATIONS OF TREE PRESERVATION (REFER TO TREE INVENTORY AND PRESERVATION PLAN BY BEACON), 2x4" STAKE TO BE IMPLEMENTED.



- LEGEND**
- 1678 Tree tag
 - Tree for Preservation*
 - Tree for Preservation Requiring Injury Mitigation
 - Tree for Removal
 - Critical Root Zone (CRZ) Per SS12A
 - Minimum Tree Protection Zone (MTPZ) Per SS12A
 - Drawing Match Lines
 - Silt Fence to be Installed Prior to Bulk Earthworks
 - Combined Silt Fence and Tree Protection Fence to be Installed Prior to Bulk Earthworks

* Trees #475, 622, and 623 are dead/dying ash trees identified for retention as snag habitat, to be confirmed with City

Notes: Scale shown is for an 36" x 24" page. For illustrative purposes. Do not scale.

№	REVISIONS	DATE	BY:
6	ISSUED FOR SUBMISSION	2025/11/27	DW
5	ISSUED FOR SUBMISSION	2025/03/07	DW
4	ISSUED FOR SUBMISSION	2025/02/28	DW
3	ISSUED FOR SUBMISSION	2024/05/03	DW
2	ISSUED FOR SUBMISSION	2023/05/03	MU
1	ISSUED FOR SUBMISSION	2020/01/29	MU

SCALE
1:750
0 10 20m

NORTH ARROW

CERTIFIED ARBORIST
ISA
SHANE JOEBER
#CN-1746AM

BEACON ENVIRONMENTAL

CLIENT
EVERGREEN COMMUNITY LTD.

PROJECT
EVERGREEN BURLINGTON, ON

SHEET TITLE
TREE INVENTORY AND PRESERVATION PLAN

DESIGN BY:	...	PROJECT №:	212113
DRAWN BY:	MB	FIGURE №:	7.5e
CHECKED BY:	MU	DATE:	26 November 2025