

# Appendices

## Appendices to the By-law (Not Operative Parts of the By-law)

Appendix A: Approximate location of Conservation Authority Regulation Limit



Appendix B: Approximate location of highway and railway right-of-ways

Appendix C: Approximate location of pipeline right-of-ways

# Burlington Residential Zoning By-law, Appendix A, Approximate Location of Conservation Authority Regulation Limits

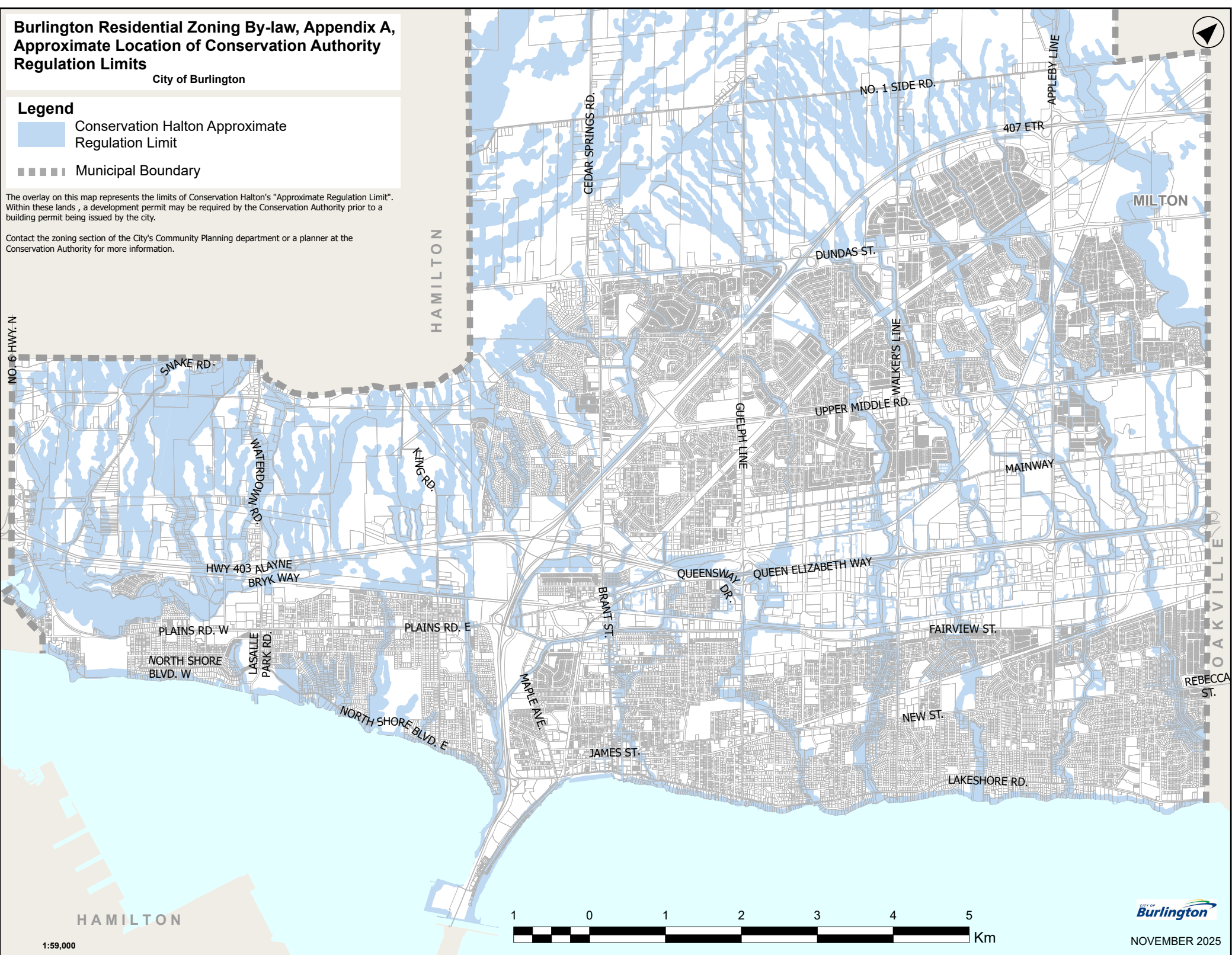
City of Burlington

## Legend

-  Conservation Halton Approximate Regulation Limit
-  Municipal Boundary

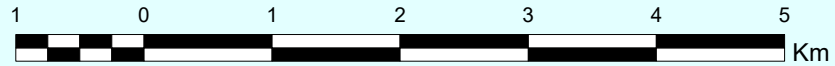
The overlay on this map represents the limits of Conservation Halton's "Approximate Regulation Limit". Within these lands, a development permit may be required by the Conservation Authority prior to a building permit being issued by the city.

Contact the zoning section of the City's Community Planning department or a planner at the Conservation Authority for more information.



HAMILTON

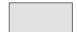


1:59,000



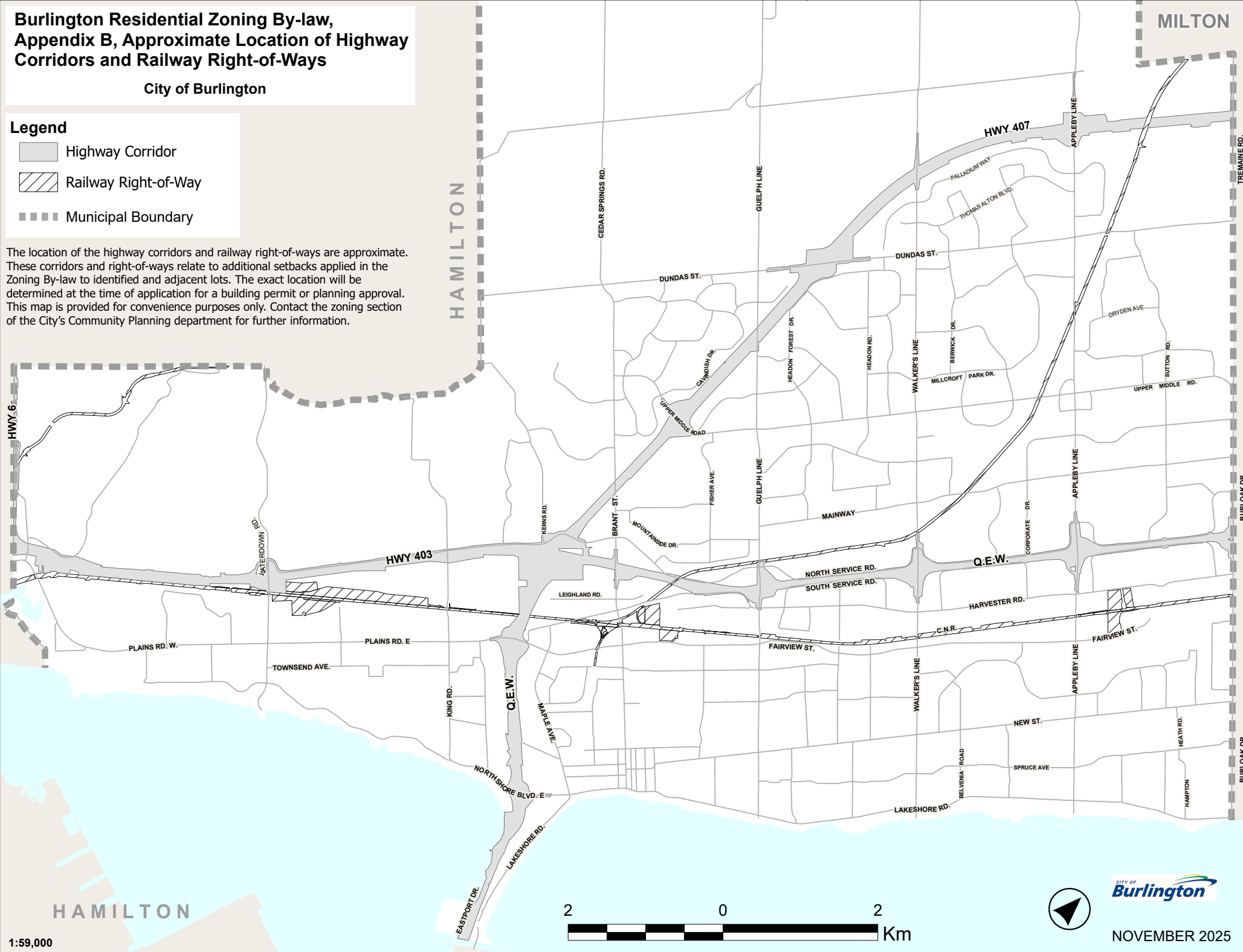
# Burlington Residential Zoning By-law, Appendix B, Approximate Location of Highway Corridors and Railway Right-of-Ways

City of Burlington

## Legend

-  Highway Corridor
-  Railway Right-of-Way
-  Municipal Boundary

The location of the highway corridors and railway right-of-ways are approximate. These corridors and right-of-ways relate to additional setbacks applied in the Zoning By-law to identified and adjacent lots. The exact location will be determined at the time of application for a building permit or planning approval. This map is provided for convenience purposes only. Contact the zoning section of the City's Community Planning department for further information.



# Burlington Residential Zoning By-law, Appendix C, Approximate Location of Pipeline Right-of-Ways

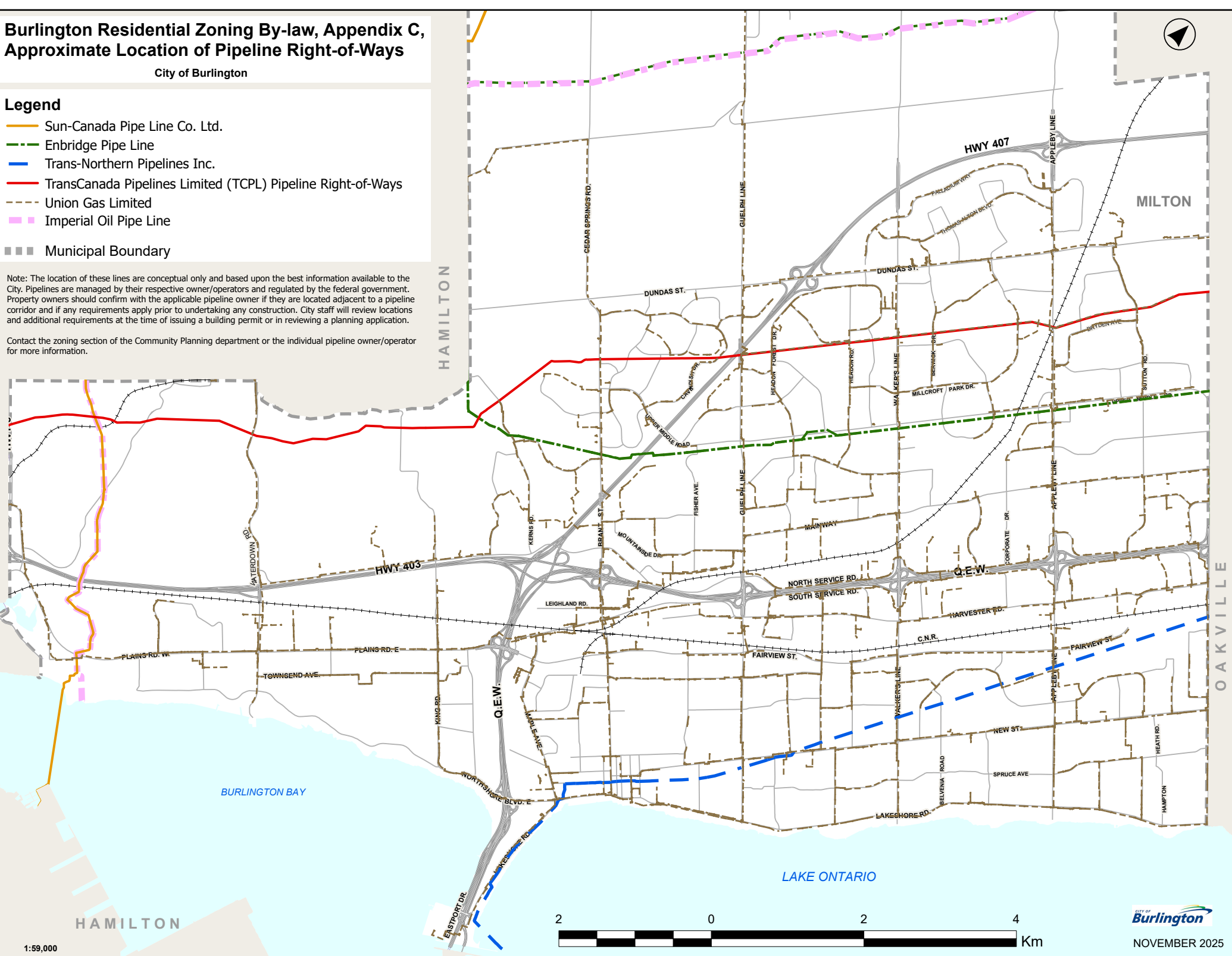
City of Burlington

## Legend

- Sun-Canada Pipe Line Co. Ltd.
- Enbridge Pipe Line
- Trans-Northern Pipelines Inc.
- TransCanada Pipelines Limited (TCPL) Pipeline Right-of-Ways
- Union Gas Limited
- Imperial Oil Pipe Line
- Municipal Boundary

Note: The location of these lines are conceptual only and based upon the best information available to the City. Pipelines are managed by their respective owner/operators and regulated by the federal government. Property owners should confirm with the applicable pipeline owner if they are located adjacent to a pipeline corridor and if any requirements apply prior to undertaking any construction. City staff will review locations and additional requirements at the time of issuing a building permit or in reviewing a planning application.

Contact the zoning section of the Community Planning department or the individual pipeline owner/operator for more information.



1:59,000



NOVEMBER 2025