

MUNICIPAL CLASS ENVIRONMENTAL ASSESSMENT NOTICE OF PUBLIC INFORMATION CENTRE

APPLEBY CREEK FLOOD MITIGATION Between Fairview and New Streets

The Study

The City of Burlington is studying the risk of flooding related to Appleby Creek between Fairview Street and New Street. The objective of the study is to provide high level recommendations to reduce flooding risks and protect the natural heritage in the area.

Alternative flood prevention strategies will be investigated, which will include widening/replacement of the culverts within the study area and adjustments of the Appleby Creek channel. Opportunities for low impact development (LID) practices will also be looked at.

The Process

The Appleby Creek Flood Mitigation Municipal Class Environmental Assessment (EA) between Fairview Street and New Street study is subject to the requirements of the *Ontario Environmental Assessment Act* as a project that will follow the Municipal Class Environmental Assessment Schedule B process. Once the existing conditions and problems are identified, solutions will be evaluated and shared with the public and agencies for comment.

Public Interaction

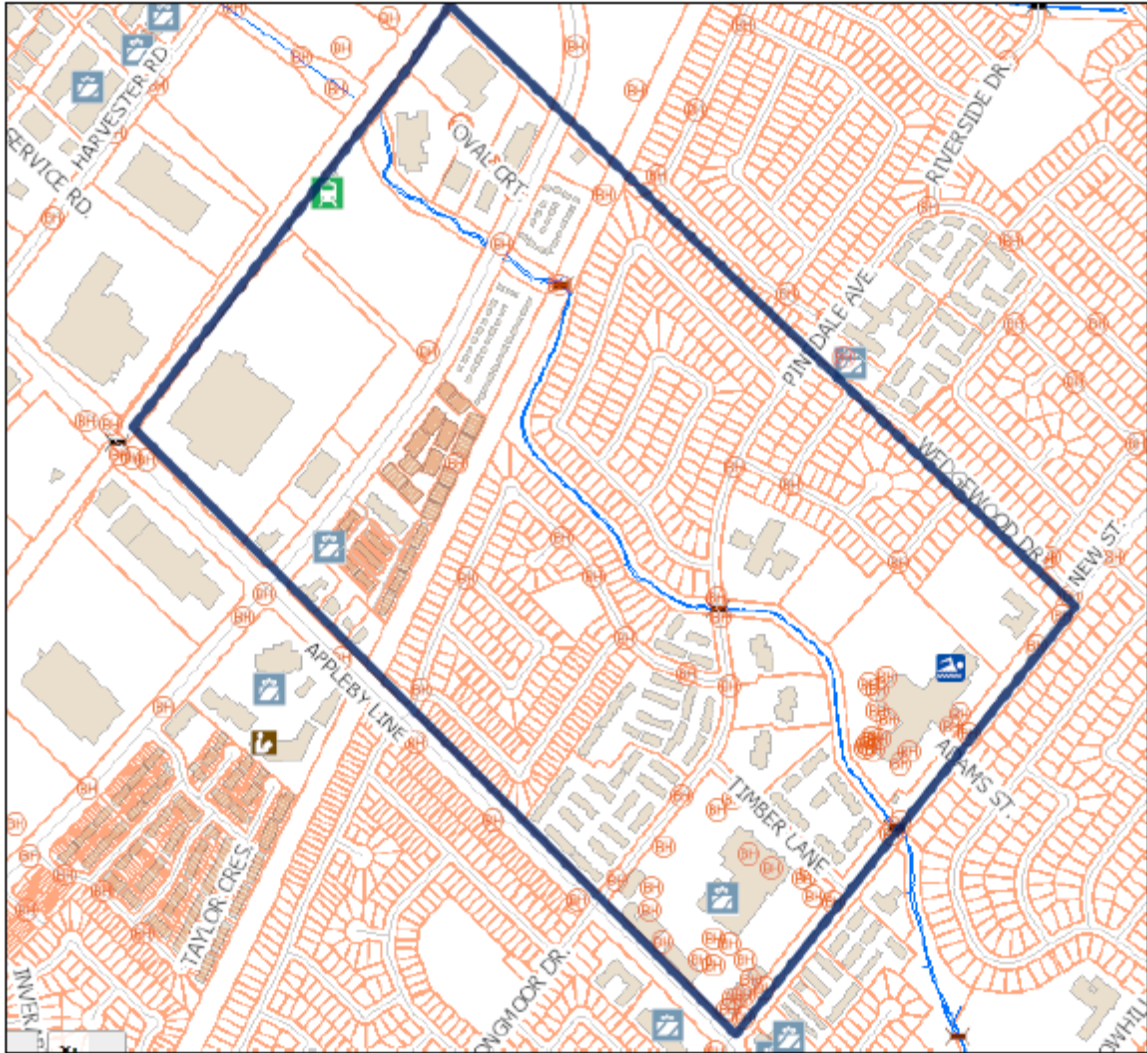
A Public Information Centre to review and discuss the EA study is scheduled for:

Date: Tuesday April 17th, 2018
Time: 6:30pm to 8:00pm
Location: Appleby Ice Centre (Community Room 1, Arena A),
1201 Appleby Line, Burlington

For more information contact:

Arif Shahzad, M. Eng., P. Eng.
Senior Project Manager – Stormwater Engineering
426 Brant Street, P.O. Box 5013, Burlington, ON L7R 3Z6
Tel: 905-335-7600 ext. 7486
E-mail: Arif.Shahzad@burlington.ca

Study Area



This notice was first published April 5, 2018
This notice was second published April 12, 2018