

Notice of Public Open House

Roseland Creek Erosion Control Project - Phase 4

TO: Local residents

In order to address risks due to failing gabion baskets and erosion of Roseland Creek, the City of Burlington will be undertaking restoration works for approximately 260m upstream of Lakeshore Road as shown in the figure below. The proposed works will be contained primarily within City owned properties or easements intended for creek maintenance.

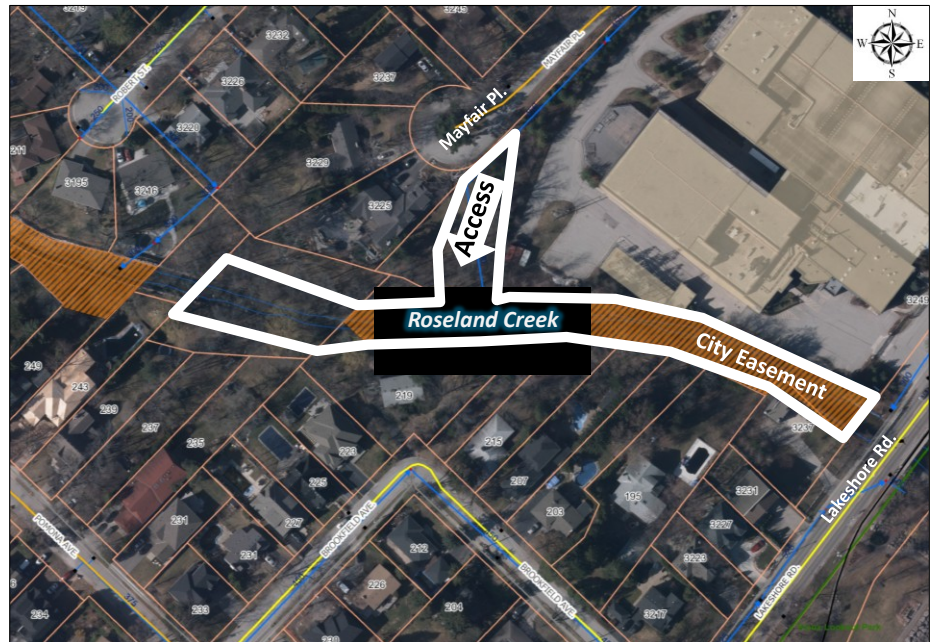
When and Where?

Thursday September 7, 2017
6:30pm – 8:00 p.m.
Burlington Central Library
Holland Room, 2331 New St,
Burlington, ON L7R 1J4

Why come to the open house?

This is your opportunity to view project information, and discuss the creek design, construction, and restoration plans.

We encourage you to ask questions and to provide comments and feedback to City staff and consultants at the open house.



About the project

- Access to the work area through Mayfair Place.
- Removal of some trees to obtain access and undertake restoration works.
- Replacement of deteriorated gabion baskets with armourstone.
- Comprehensive tree and shrub plantings. Repair all disturbed areas to pre-disturbed conditions.
- Construction is anticipated to begin fall 2019.
- Further updates will be provided as it becomes available.

Should you want to discuss this project or would like additional information please do not hesitate to call.

For more information:

Arif Shahzad, M. Eng., P. Eng.
City of Burlington, Senior Environmental Engineer
426 Brant Street, P.O. Box 5013, Burlington, ON L7R 3Z6
Tel: 905-335-7600 ext. 7486,
E-mail: Arif.Shahzad@burlington.ca

Rob Amos, M.A.Sc., P.Eng
Aquafor Beech Limited, Project Manager
6-202-2600 Skymark Ave, Mississauga, ON, L4W 5B2
Tel: 905.629.0099 ext. 284,
E-mail: amos.r@aquaforbeech.com

Information will be collected in accordance with the Freedom of Information and Protection of Privacy Act. With the exception of personal information, all comments will become part of the public record.