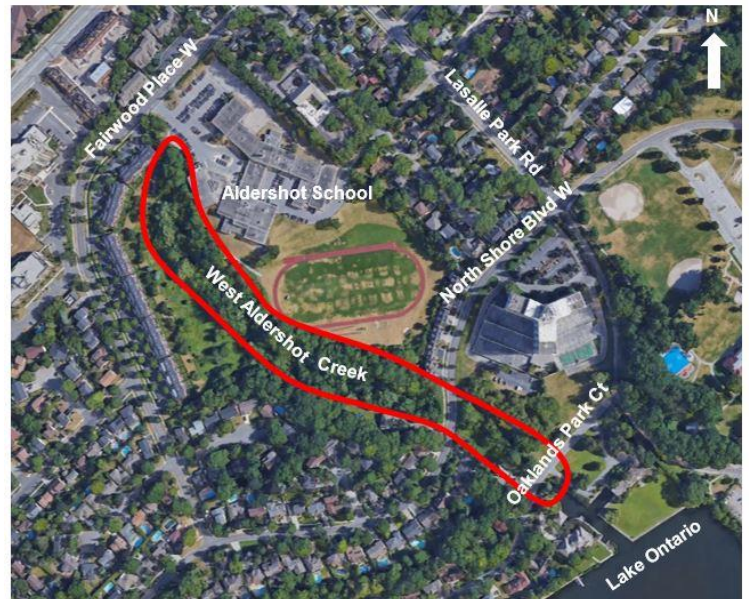


West-Aldershot Creek Erosion Control City of Burlington

The Study

The City of Burlington (City) has begun a Municipal Class Environmental Assessment (Class EA) to identify the needs and opportunities for the implementation of erosion control measures for West-Aldershot Creek between Fairwood Place and Lake Ontario in the City of Burlington. This section of West-Aldershot Creek has been affected by severe erosion along the bed and banks of the creek, including severe undercuts resulting in loss of trees and bank material, due to fast flowing surface runoff and floodwater during storm events.

The Class EA Study is developing and evaluating a variety of possible solutions to address erosion issues, infrastructure protection and enhancement of creek habitats. Potential improvement alternatives include promoting source control practices and partial or full creek restoration including the implementation of hard (i.e.: retaining walls) and/or soft engineering (i.e.: vegetation, grading) solutions.



The Process

In accordance with the Municipal Engineers Association's *Municipal Class Environmental Assessment*, this Study is being planned as a *Schedule B*. The Study process includes public and stakeholder consultation, development and evaluation of alternatives, an assessment of the impacts of the proposed improvements, and identification of measures to mitigate any adverse impacts.

Public Consultation

A Public Information Centre (PIC) to review and discuss the EA Study, including improvement options, is scheduled for:

Date: Monday, Dec. 3, 2018
 Time: 6 to 8 p.m.
 Location: Aldershot Pool, Community Room
 50 Fairwood Place West, Burlington, ON L7T 1E5

For more information, please contact one of the Project Team members identified below:

Umar Malik, M.Eng., P. Eng.
 Stormwater Engineer

City of Burlington – City Hall
 426 Brant St.; P.O. Box 5013
 Burlington, ON L7R 3Z6
 Tel.: 905-335-7600 x7426
 Email: umar.malik@burlington.ca

Andrea LaPlante, P. Eng.
 Class EA Lead

Associated Engineering (Ont.) Ltd.
 509 Glendale Ave. E. Suite 300
 Niagara-on-the-Lake, ON L0S 1J0
 Tel.: 905-346-0990
 Email: laplantea@ae.ca