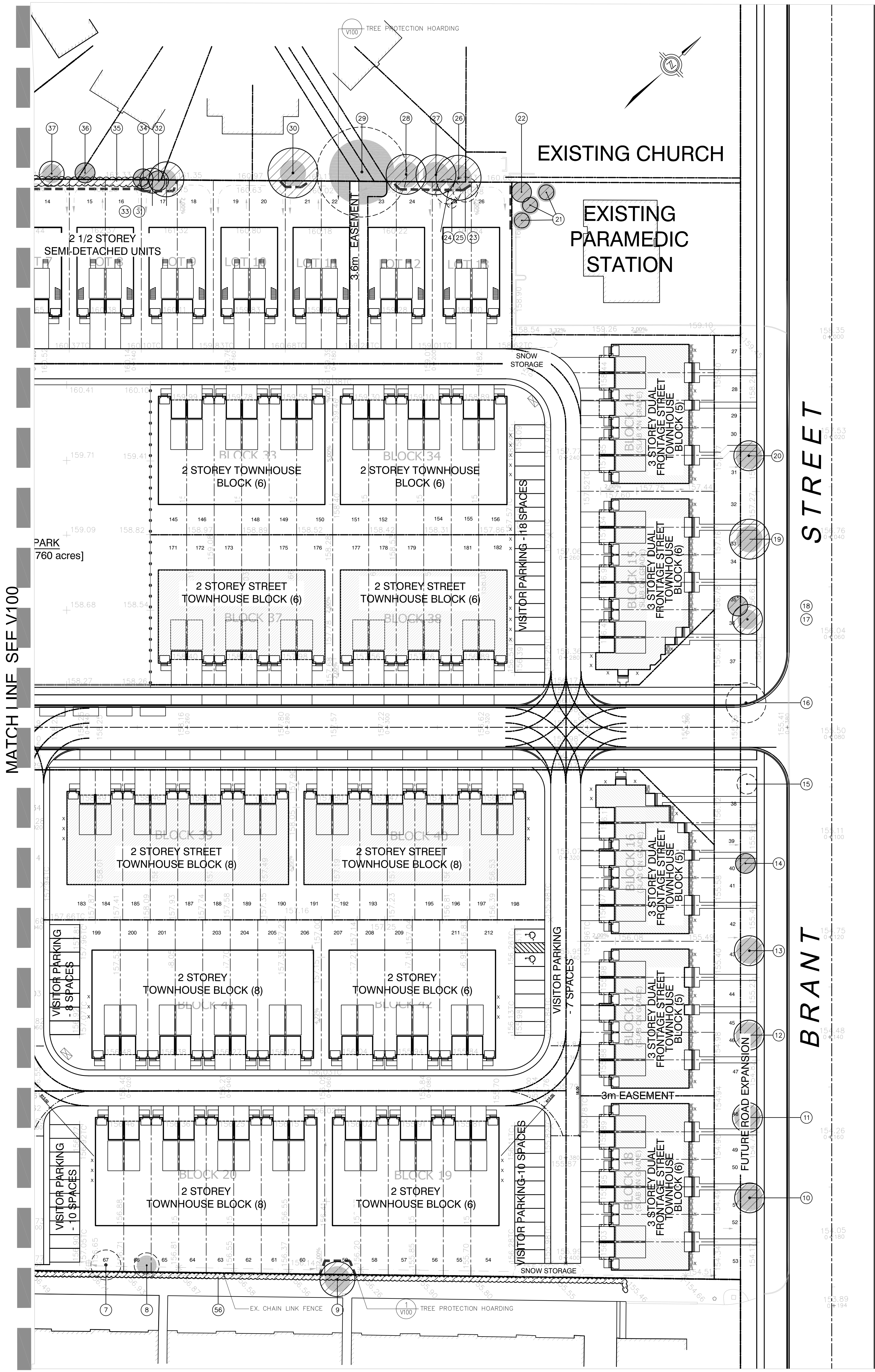


KEY	SPECIES	CALIBER IN (cm)	CROWN IN (m)	HEALTH C.F.P.	STRUCTURE	COMMENTS	PRESERVATION DIRECTION	MIN. IDZ	KEY
7	ASH	54	6	POOR-	POOR FORM	SPARSE CROWN, EAB INFECTED, DIEBACK THROUGHOUT, HEAVILY PRUNED.	REMOVE	3.6	7
8	HICKORY	28	5	GOOD	GOOD FORM	CROSSING BRANCHES	REMOVE	1.8	8
9	PEAR	10-30	7	PO	GOOD FORM	MULTI-STEMMED, PRUNED LOWER BRANCHES, BROKEN BRANCHES, 80MM FROM FENCE LINE	PRESERVE	2.4	9
10	LINDEN	40	6	POOR-	POOR FORM	DIEBACK, PRUNED FOR HYDRO, LEANING SOUTHEAST, NO ROOT FLARE, OPEN CALLOUSED WOUND/LEBLE STEMMED	PRESERVE	2.4	10
11	LINDEN	33	6	FAIR	GOOD FORM	PRUNED FOR DOMINANT LEADER, CURVED STEM, SUCKERS.	PRESERVE	2.4	11
12	LINDEN	34	6	FAIR	POOR FORM	SIGNIFICANT LEAN SOUTHEAST, MULTIPLE UNIONS AT 2.5M, NO ROOT FLARE.	PRESERVE	2.4	12
13	LINDEN	35	6	FAIR	GOOD FORM	SLIGHT LEAN EAST, SUCKERS, PRUNED FOR HYDRO.	PRESERVE	2.4	13
14	LINDEN	22	4	GOOD	GOOD FORM	OPEN CALLOUSED BASAL WOUND	PRESERVE	1.8	14
15	LINDEN	24	4	GOOD	GOOD FORM	SLIGHT LEAN EAST, CO-DOMINANT LEADERS	REMOVE	1.8	15
16	LINDEN	48	8	FAIR	GOOD FORM	PRUNED FOR HYDRO, SUCKERS, CURVED STEM.	REMOVE	3	16
17	LINDEN	29	6	FAIR	GOOD FORM	CURVED STEM, SUCKERS, CROWDING BY ADJACENT TREE	PRESERVE	1.8	17
18	PEAR	5-12	4	FAIR	GOOD FORM	MULTI-STEMMED AT GRADE, CROWDING BY ADJACENT TREE, BRANCHING TO GRADE	PRESERVE	1.8	18
19	LINDEN	37	6	FAIR	GOOD FORM	MIDDLE OF SLOPE, PRUNED FOR HYDRO, SUCKERS, SLIGHT LEAN SOUTH.	PRESERVE	2.4	19
20	LINDEN	37	6	FAIR	GOOD FORM	MIDDLE OF SLOPE, PRUNED FOR HYDRO, SUCKERS, OPEN CALLOUSED BASAL WOUND	PRESERVE	2.4	20
21	COLORADO SPRUCE	16-15	3	GOOD	GOOD FORM	GROWING IN IMMATURE PLANTED TREES	PRESERVE	1.8	21
22	LINDEN	15	4	GOOD	GOOD FORM	RECENTLY PLANTED TREE	PRESERVE	1.8	22
23	NORWAY MAPLE	21	5	FAIR	ASYMMETRICAL FORM	LEANING SOUTH, CROWDING BY ADJACENT TREE	REMOVE	1.8	23
24	POPLAR	31	5	FAIR	NARROW FORM	CO-DOMINANT LEADERS, ONE BROKEN, CROWDING BY ADJACENT TREE, LEANING SOUTH	REMOVE	2.4	24
25	POPLAR	25	5	FAIR	NARROW FORM	CROWDING BY ADJACENT TREE, SLIGHT LEAN NORTH	REMOVE	1.8	25
26	BLACK WALNUT	35	9	FAIR	ONE SIDED FORM	CROWDING BY ADJACENT TREE, DIEBACK ON LOWER BRANCHES	PRESERVE	2.4	26
27	BLACK WALNUT	35	8	FAIR	NARROW FORM	CROWDING BY ADJACENT TREE, SLIGHT LEAN NORTH	PRESERVE	2.4	27
28	BLACK WALNUT	35	8	FAIR	NARROW FORM	CROWDING BY ADJACENT TREE, SLIGHT LEAN NORTH	PRESERVE	2.4	28
29	WEeping WILLOW	65-95	18	FAIR	BROAD FORM	MULTI-STEMMED, ONE STEM REMOVED AT GRADE, BROKEN BRANCHES, SUCKERS, ORGANIC BUILD-UP IN SPACE BETWEEN STEM UNIONS	REMOVE	8	29
30	BURAR MAPLE	40	10	FAIR	BROAD FORM	EPICORMIC GROWTH, SLIGHTLY CROWDING BY ADJACENT TREE, CO-DOMINANT LEADERS	PRESERVE	2.4	30
31	PEAR	15-25	7	FAIR	ONE SIDED FORM	MULTI-STEMMED, CROWDING BY ADJACENT TREE HEAVILY PRUNED	PRESERVE	1.8	31
32	NORWAY MAPLE	15	5	FAIR	ONE SIDED FORM	CROWDING BY ADJACENT TREE, CURVED STEM, CO-DOMINANT LEADERS	PRESERVE	1.8	32
33	NORWAY MAPLE	16	4	FAIR	ONE SIDED FORM	CROWDING BY ADJACENT TREE, LEANING WEST, CO-DOMINANT LEADERS	PRESERVE	1.8	33
34	PEAR	12x15	5	FAIR	ONE SIDED FORM	CROWDING BY ADJACENT TREE, HEAVILY PRUNED	PRESERVE	1.8	34
35	MIXED HEDDEROW	SAPLINGS	VARIABLES	FAIR	VARIABLES	PREDOMINANTLY IMMATURE BLACKTHORN WITH SCATTERED ASH, MAPLE AND SPRUCE SPECIES	PRESERVE	1.2	35
36	PEAR	8-15	4	FAIR	ONE SIDED FORM	SUCKERS, DIEBACK	PRESERVE	1.8	36
37	PEAR	8-20	5	FAIR	GOOD FORM	MULTI-STEMMED, INTERNAL DECAY ON LOWER STEM/STEMMED	PRESERVE	1.8	37
38	COMMON HEDDEROW	10	4	GOOD	GOOD FORM	DENSELY PLANTED WHITE CEDAR HEDDEROW ON ADJACENT PROPERTY ALONG FENCE LINE, APPROXIMATELY 4M HT.	PRESERVE	NA	38



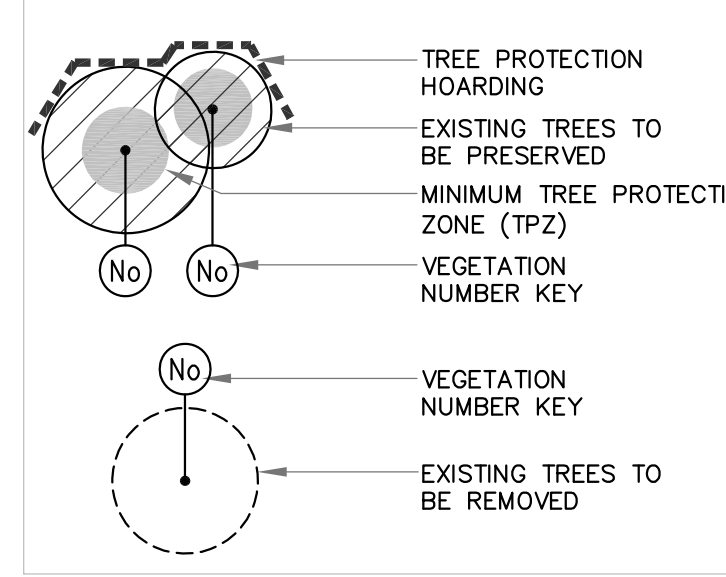
GENERAL NOTES

- VERIFY ALL DIMENSIONS.
- DO NOT SCALE DRAWINGS.
- REPORT ANY DISCREPANCIES, DISCOVERED ERRORS, OR OMISSIONS TO THE LANDSCAPE ARCHITECT BEFORE PROCEEDING.
- IT IS ADVISED THAT CONTRACTORS CONTACT THE LANDSCAPE ARCHITECT PRIOR TO CONSTRUCTION TO ENSURE THE USE OF THE LATEST REVISED DRAWINGS.
- DRAWINGS AND SPECIFICATIONS ARE THE PROPERTY OF THE LANDSCAPE ARCHITECT.

KEY MAP



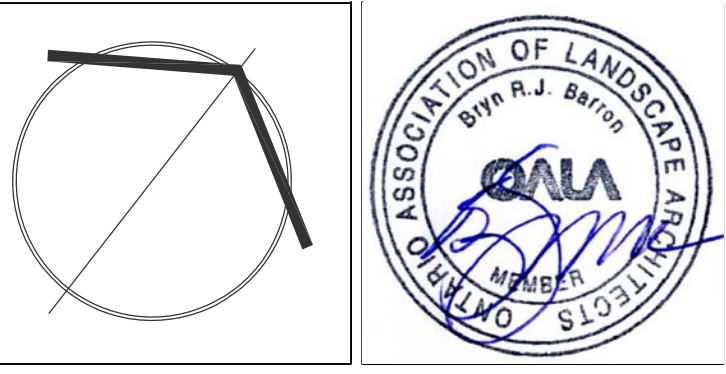
KEY MAP LEGEND



JOSHUA D. BEITZ
 INTERNATIONAL SOCIETY OF ARBORICULTURE
 CERTIFIED ARBORIST #007463A
 DATE: APRIL 24, 2017

No.	DATE	REVISION	BY
3	2018-06-18	ISSUED FOR SUBMISSION	B.B.
2	2017-07-10	ISSUED FOR SUBMISSION	B.B.
1	2017-04-19	ISSUED FOR PUBLIC MEETING	B.B.

It is the responsibility of the Contractor and/or Owner to ensure that the drawings with the latest revisions are used for construction.



SBK 5770 HURONTARIO STREET, SUITE 320
 MISSISSAUGA, ONTARIO, L5R 3G5
 T: 416.695.4949 F: 905.712.3101
 WWW.STRYBOS.COM

STRYBOS BARRON KING
 LANDSCAPE ARCHITECTURE

PROJECT:
PROPOSED RESIDENTIAL DEVELOPMENT
 BRANT STREET, BURLINGTON
 NATIONAL HOMES

DRAWING TITLE:
EXISTING TREE INVENTORY AND PRESERVATION PLAN

SCALE: 1:400	PROJECT No. 16-5010
DATE: JUNE, 2018	DRAWING No. V101
DRAWN BY: S.M.	CHECKED BY: B.B.