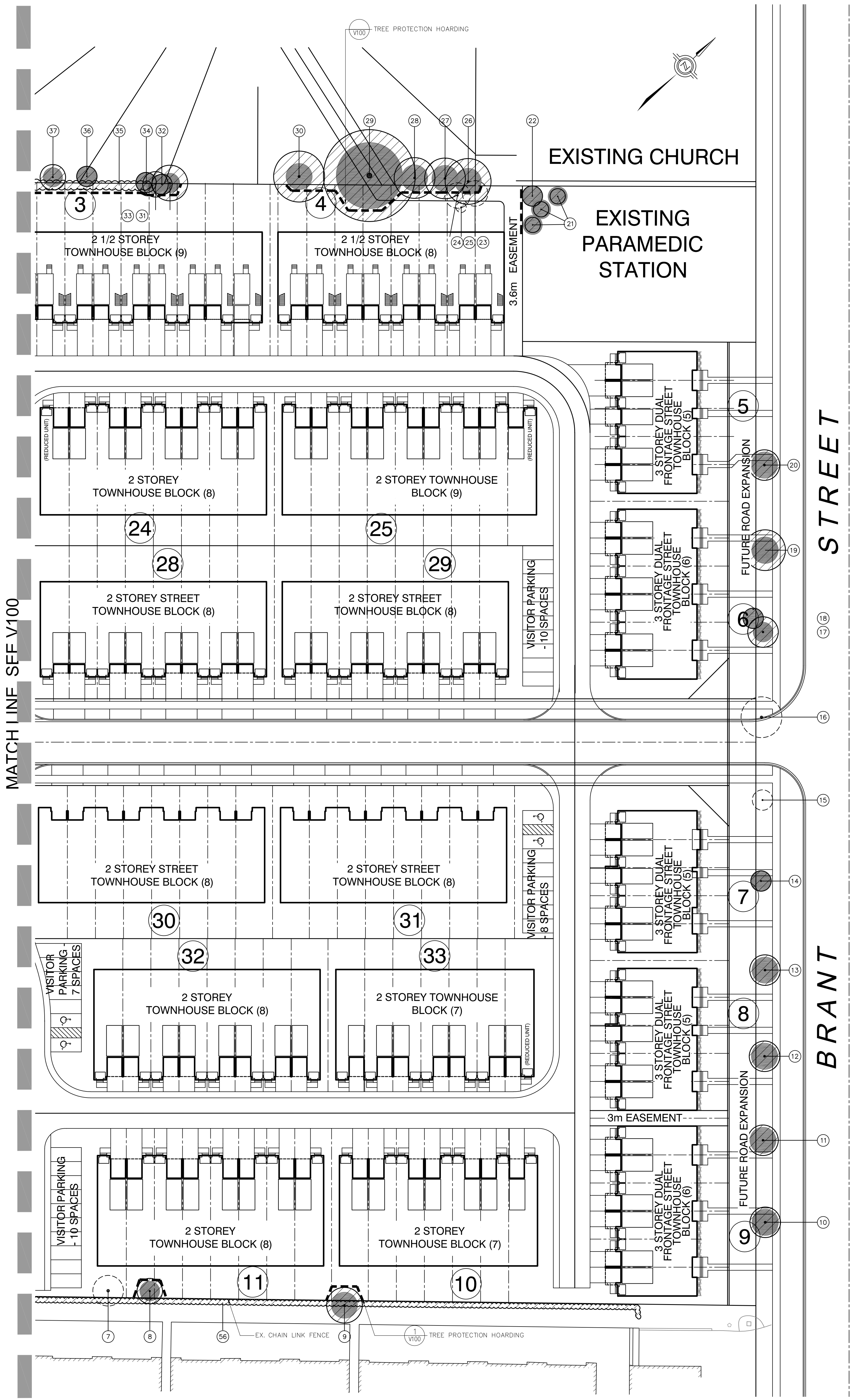


EXISTING TREE INVENTORY

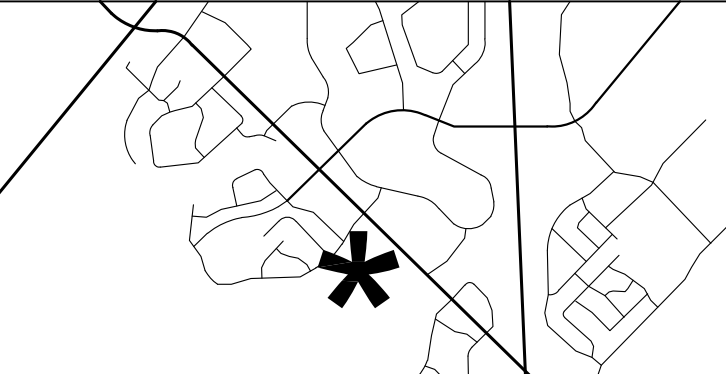
KEY	SPECIES	CALIPER IN (cm)	CROWN IN (m)	HEALTH	STRUCTURE	COMMENTS	PRESERVATION DIRECTION	MIN. TPZ	KEY
7	ASH	54	6	POOR/FAIR	POOR FORM	SPARSE CROWN, EAB INFECTED; DIEBACK THROUGHOUT; HEAVILY PRUNED.	REMOVE	3.6	7
8	HORORY	26	5	GOOD	GOOD FORM	CROSSING BRANCHES	PRESERVE	1.8	8
9	PEAR	10-30	7	FC	GOOD FORM	MULTI-STEMMED; PRUNED LOWER BRANCHES; BROKEN BRANCHES; 600mm FROM FENCE LINE.	PRESERVE	2.4	9
10	LINDEN	48	6	POOR/FAIR	POOR FORM	DIEBACK; PRUNED FOR HYDRO; LEANING SOUTHEAST; NO ROOF FLARE; OPEN CALLOUSED WOUND/DUPLICATE STEMMED	PRESERVE	2.4	10
11	LINDEN	33	6	FAIR	GOOD FORM	PRUNED FOR DOMINANT LEADER; CURVED STEM; SUCKERS	PRESERVE	2.4	11
12	LINDEN	34	6	FAIR	POOR FORM	SIGNIFICANT LEAN SOUTHEAST; MULTIPLE UNIONS AT 2.5m; NO ROOF FLARE.	PRESERVE	2.4	12
13	LINDEN	35	6	FAIR	GOOD FORM	SLIGHT LEAN EAST; SUCKERS; PRUNED FOR HYDRO	PRESERVE	2.4	13
14	LINDEN	22	4	GOOD	GOOD FORM	OPEN CALLOUSED BASAL WOUND	PRESERVE	1.8	14
15	LINDEN	24	4	GOOD	GOOD FORM	SLIGHT LEAN EAST; CO-DOMINANT LEADERS	REMOVE	1.8	15
16	LINDEN	48	8	FAIR-GOOD	GOOD FORM	PRUNED FOR HYDRO; SUCKERS; CURVED STEM	REMOVE	3	16
17	LINDEN	28	6	FAIR-GOOD	GOOD FORM	CURVED STEM; SUCKERS; P; CROWDING BY ADJACENT TREE	PRESERVE	1.8	17
18	PEAR	5-12	4	FAIR-GOOD	GOOD FORM	MULTI-STEMMED AT GRADE; CROWDING BY ADJACENT TREE; BRANCHING TO GRADE	PRESERVE	1.8	18
19	LINDEN	37	8	FAIR	GOOD FORM	MIDDLE OF SLOPE; PRUNED FOR HYDRO; SUCKERS; SLIGHT LEAN SOUTH	PRESERVE	2.4	19
20	LINDEN	37	6	FAIR-GOOD	GOOD FORM	MIDDLE OF SLOPE; PRUNED FOR HYDRO; SUCKERS; OPEN CALLOUSED BASAL WOUND	PRESERVE	2.4	20
21	ICEBERG SPRUCE	10-15	3	GOOD	GOOD FORM	GROWING OF 3 MAINTENANCE PLANTED TREES	PRESERVE	1.8	21
22	LINDEN	15	4	GOOD	GOOD FORM	RECENTLY PLANTED TREE	PRESERVE	1.8	22
23	NORWAY MAPLE	21	4	FAIR	ASYMMETRICAL	LEANING SOUTH; CROWDING BY ADJACENT TREE	REMOVE	1.8	23
24	POPLAR	31	5	FAIR	NARROW FORM	CO-DOMINANT LEADERS; ONE BROKEN; CROWDING BY ADJACENT TREE; LEANING SOUTH	REMOVE	2.4	24
25	POPLAR	25	5	FAIR	NARROW FORM	DEAD	REMOVE	1.8	25
26	BLACK WALNUT	35	9	FAIR	ONE SIDED FORM	CROWDING BY ADJACENT TREE; DIEBACK ON LOWER BRANCHES	PRESERVE	2.4	26
27	BLACK WALNUT	35	8	FAIR	NARROW FORM	CROWDING BY ADJACENT TREE; SLIGHT LEAN NORTH	PRESERVE	2.4	27
28	BLACK WALNUT	35	8	FAIR	NARROW FORM	CROWDING BY ADJACENT TREE; SLIGHT LEAN NORTH	PRESERVE	2.4	28
29	WEEPING WILLOW	65-85	18	FAIR	BROAD FORM	MULTI-STEMMED; ONE STEM REMOVED AT GRADE; BROKEN BRANCHES; SUCKERS; ORGANIC BUILD-UP IN SPACE BETWEEN STEM UNIONS	PRESERVE	8	29
30	SUGAR MAPLE	40	10	FAIR-GOOD	BROAD FORM	EPICORMIC GROWTH; SLIGHTLY CROWDING BY ADJACENT TREE; CO-DOMINANT LEADERS	PRESERVE	2.4	30
31	PEAR	15-25	7	FAIR	ONE SIDED FORM	MULTI-STEMMED; CROWDING BY ADJACENT TREE; HEAVILY PRUNED	PRESERVE	1.8	31
32	NORWAY MAPLE	15	5	FAIR-GOOD	ONE SIDED FORM	CROWDING BY ADJACENT TREE; CURVED STEM; CO-DOMINANT LEADERS	PRESERVE	1.8	32
33	NORWAY MAPLE	16	4	FAIR-GOOD	ONE SIDED FORM	CROWDING BY ADJACENT TREE; LEANING WEST; CO-DOMINANT LEADERS	PRESERVE	1.8	33
34	PEAR	12-15	5	FAIR	ONE SIDED FORM	CROWDING BY ADJACENT TREE; HEAVILY PRUNED	PRESERVE	1.8	34
35	MIXED HEDGEROW	VARIES	VARIES	FAIR	VARIES	PREDOMINANTLY IMMATURE BUCKTHORN WITH SCATTERED ASH, MAPLE AND SPRUCE SPECIES	PRESERVE	1.2	35
36	PEAR	8-15	4	FAIR	ONE SIDED FORM	SUCKERS; DIEBACK	PRESERVE	1.8	36
37	PEAR	8-20	5	FAIR	GOOD FORM	MULTI-STEMMED; INTERNAL DECAY ON LOWER STEM/MULTI-STEMMED	PRESERVE	1.8	37
86	CONIFEROUS HEDGE	10	FAIR	GOOD		DENSELY PLANTED WHITE CEDAR HEDGE ON ADJACENT PROPERTY ALONG FENCE LINE; APPROXIMATELY 4M HT.	PRESERVE	NA	86



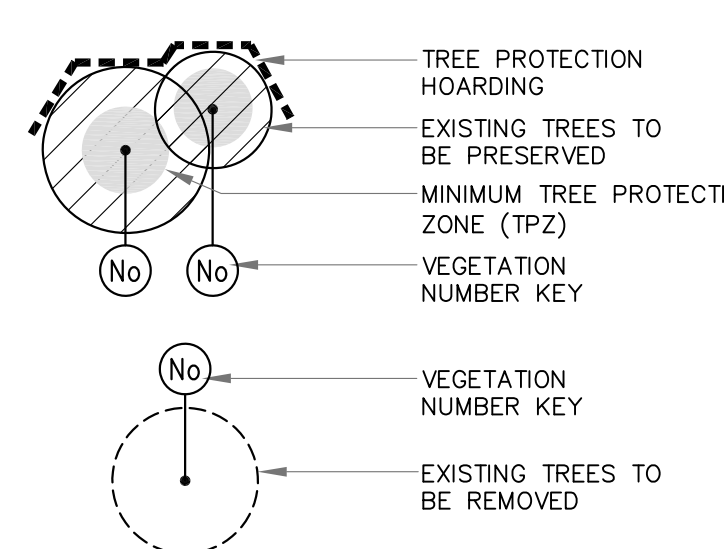
GENERAL NOTES

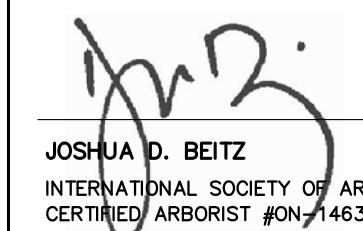
- VERIFY ALL DIMENSIONS.
- DO NOT SCALE DRAWINGS.
- REPORT ANY DISCREPANCIES, DISCOVERED ERRORS, OR OMISSIONS TO THE LANDSCAPE ARCHITECT BEFORE PROCEEDING.
- IT IS ADVISED THAT CONTRACTORS CONTACT THE LANDSCAPE ARCHITECT PRIOR TO CONSTRUCTION TO ENSURE THE USE OF THE LATEST REVISED DRAWINGS.
- DRAWINGS AND SPECIFICATIONS ARE THE PROPERTY OF THE LANDSCAPE ARCHITECT.

KEY MAP



KEY MAP LEGEND

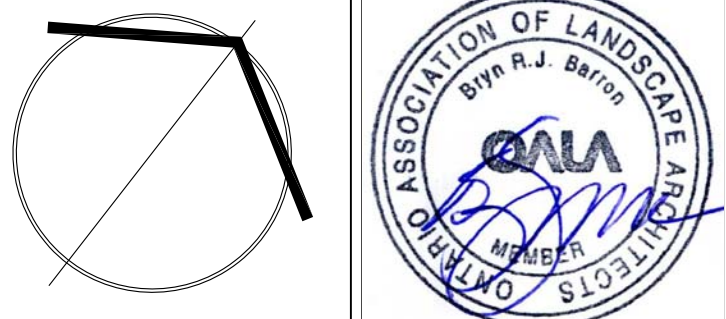




JOSHUA D. BEITZ
 INTERNATIONAL SOCIETY OF ARBORICULTURE
 CERTIFIED ARBORIST #0N7463A
 DATE: APRIL 24, 2017

No.	DATE	REVISION	BY
2	2017-07-10	ISSUED FOR SUBMISSION	B.B.
1	2017-04-19	ISSUED FOR PUBLIC MEETING	B.B.

It is the responsibility of the Contractor and/or Owner to ensure that the drawings with the latest revisions are used for construction.




 5770 HURONTARIO STREET, SUITE 320
 MISSISSAUGA, ONTARIO, L5R 3G5
 T: 416.695.4949 F: 905.712.3101
 WWW.STRYBOS.COM
STRYBOS BARRON KING
 LANDSCAPE ARCHITECTURE

PROJECT:
 PROPOSED RESIDENTIAL DEVELOPMENT
 BRANT STREET, BURLINGTON
 NATIONAL HOMES

DRAWING TITLE:
 EXISTING TREE INVENTORY AND PRESERVATION PLAN

SCALE:	PROJECT No.
1:400	16-5010
DATE:	DRAWING No.
APRIL, 2017	V101
DRAWN BY:	
S.M.	
CHECKED BY:	
B.B.	