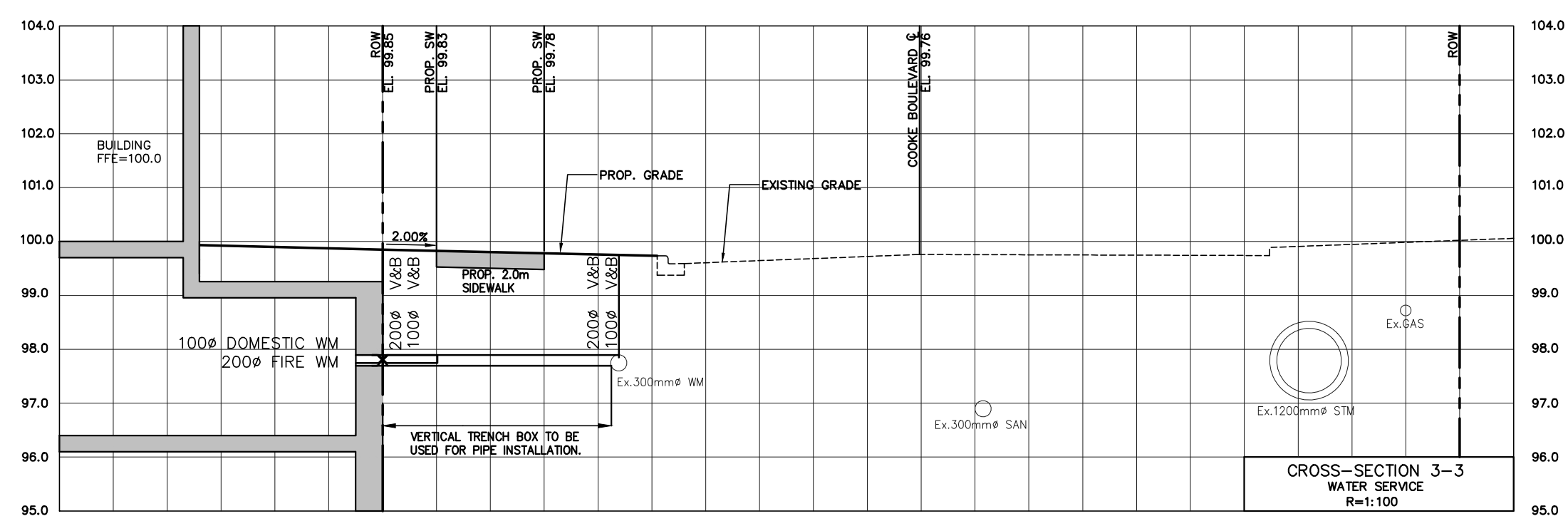
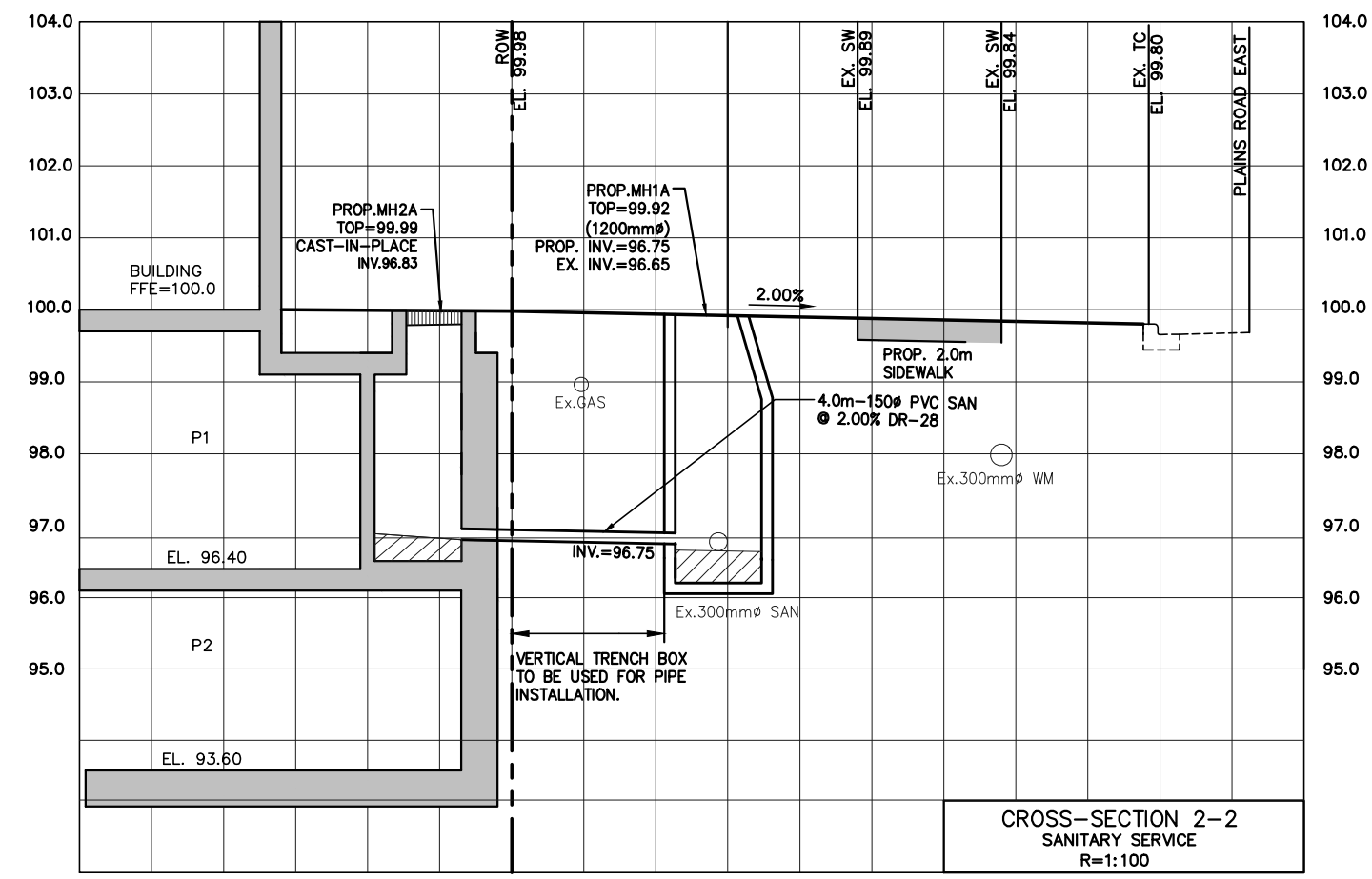
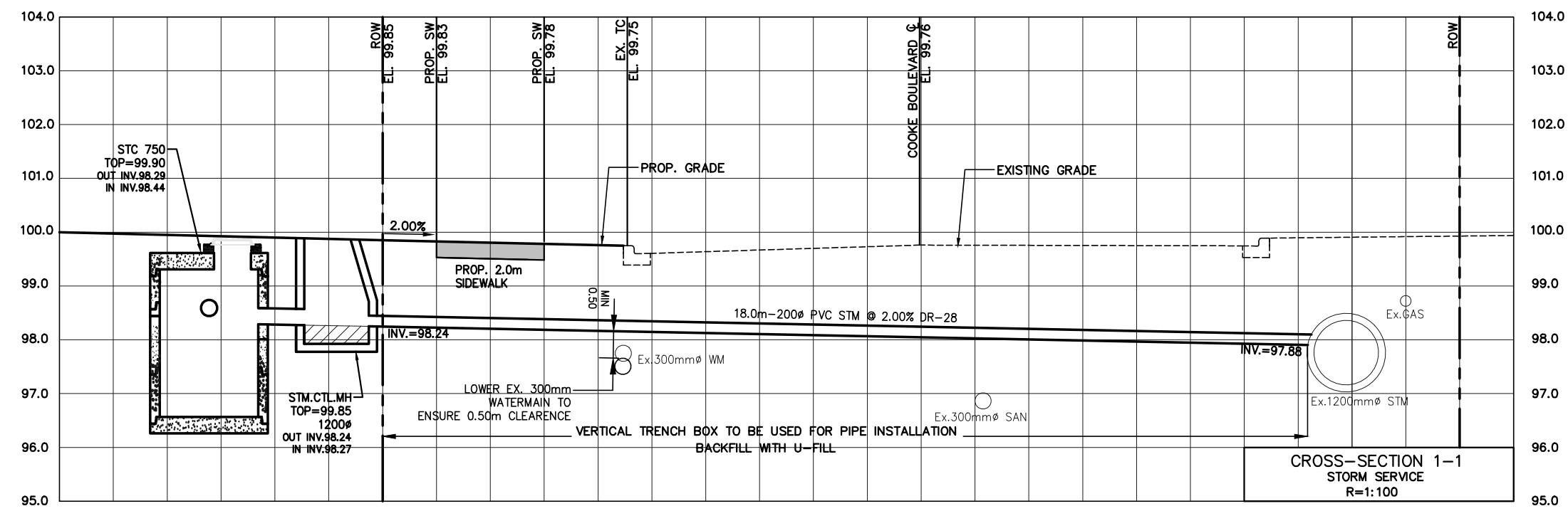
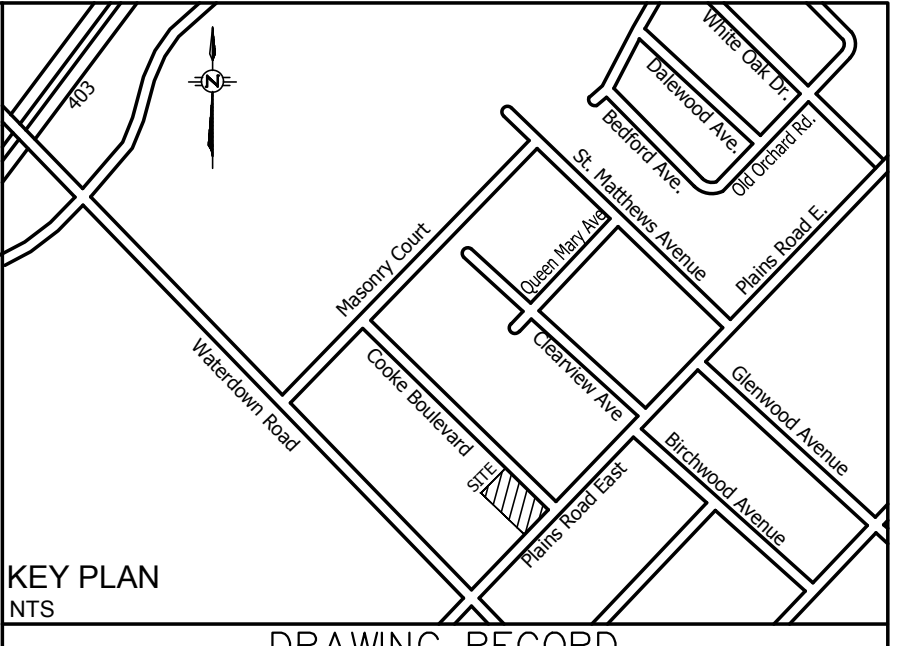


LEGAL DESCRIPTION
 PLAN OF SURVEY AND
 TOPOGRAPHIC PLAN OF
 PART OF LOT 6 CONVESSION 1
 (GEOGRAPHIC TOWNSHIP OF EAST FLAMBOROUGH)
 CITY OF BURLINGTON
 REGIONAL MUNICIPALITY OF HALTON



DRAWING RECORD

DIGITAL FILE No.	BASE PLAN DRAWN BY	DATE

REFERENCE FILE No.	INITIAL DESIGN DRAWN BY	DATE

REVISIONS

No.	REMARKS	DATE	AUTH.
1.	ISSUED FOR FIRST SUBMISSION	APR. 08/16	M.I.

BEFORE ANY DIGGING
 BELL TELEPHONE — CONSUMERS GAS — ONTARIO HYDRO
 T.V. CABLE — TRAFFIC LIGHT CABLE
 MUST BE CONTACTED
 FOR EXACT LOCATION OF THEIR UTILITIES

FIELD INFORMATION

TOTAL STA.			
FIELD BOOKS			
TOPO. BOOKS			
ORDER NO.	ROAD	STORM	SANITARY
CONTRACT NO.			

NOTES

BENCH MARK AND LAYOUT INFORMATION
 ELEVATIONS AREA GEODETIC AND ARE REFERRED TO CITY OF BURLINGTON
 BENCHMARK NUMBER 298 HAVING AN ELEVATION OF 97.915 METERS.
 ELEVATIONS ARE REFERENCED TO THE CANADIAN GEODETIC VERTICAL
 DATUM OF 1928, 1978 ADJUSTMENT (CGVD-1228:1978).
 BEARINGS ARE UTM GRID, DERIVED FROM SPECIFIED CONTROL POINTS
 04219900017 AND 04219900097, UTM ZONE 17, NAD83 (ORIGINAL)

SCHAEFFERS
 CONSULTING ENGINEERS
 6 Rosrose Drive, Concord, Ontario L4K 4K3
 Tel: (905) 738-6100
 Fax: (905) 738-6875
 E-mail: design@schaeffers.com



35 PLAINS ROAD
 RESIDENTIAL CONDOMINIUM DEVELOPMENT
 CITY OF BURLINGTON
CROSS-SECTIONS

SCALE	1:200
PROJECT	2015 - 4362 DWG No. SEC-01

DESIGN

DESIGN	RD	SAN	STM	WM	SPA No.:
DESIGN					
CHECK					DATE FEBRUARY, 2016

NOTES:

1. FOR CROSS-SECTION LOCATIONS REFER TO DWG. SS-1

SPECIAL NOTE:

1) THE LOCATION OF ALL UNDERGROUND AND ABOVEGROUND UTILITIES AND STRUCTURES IS NOT NECESSARILY SHOWN ON CONTRACT DRAWINGS, AND WHERE SHOWN THE ACCURACY OF THE LOCATION AND ELEVATION OF SUCH UTILITIES AND STRUCTURES IS NOT GUARANTEED. PRIOR TO COMMENCING THE CONSTRUCTION, THE CONTRACTOR SHALL VERIFY EXACT LOCATION AND ELEVATION OF SUCH UTILITIES AND STRUCTURES AND SHALL ASSUME ALL LIABILITIES OF DAMAGE.
 2) ANY CONFLICTS WITH EXISTING SERVICES AND/OR UTILITIES SHALL BE REPORTED TO THE ENGINEER FOR REVIEW AND ADVICE PRIOR TO COMMENCE THE CONSTRUCTION.
 3) INFORMATION REGARDING ANY EXISTING SERVICES AND/OR UTILITIES SHOWN ON THIS SECTION ARE FURNISHED AS THE BEST AVAILABLE INFORMATION. THE CONTRACTOR SHALL INTERPRET THIS INFORMATION AS HE SEES FIT WITH THE UNDERSTANDING THAT THE OWNER, ENGINEER AND CITY DISCLAIM ALL RESPONSIBILITY FOR ITS ACCURACY AND/OR SUFFICIENCY.
 4) THE CONTRACTOR SHALL PROVIDE DETAILS TO SUPPORT THE EX. SERVICES AND/OR UTILITIES FOR ENGINEER'S APPROVAL PRIOR TO START THE CONSTRUCTION.