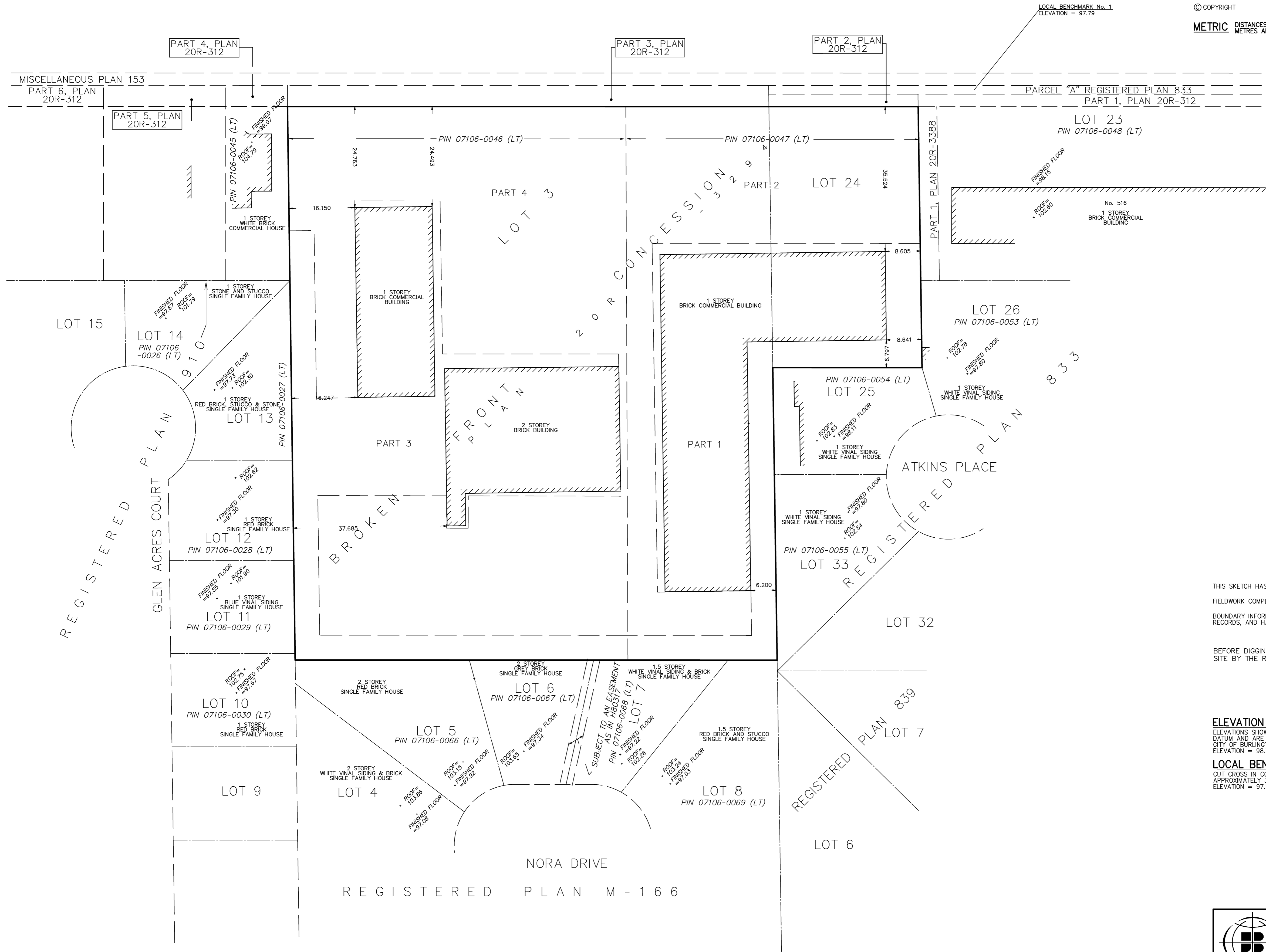


PLAINS ROAD EAST
(ROAD ALLOWANCE BETWEEN BROKEN FRONT CONCESSION AND CONCESSION 1)
PIN 07111-0002 (LT)

SKETCH ILLUSTRATING BUILDING AND ROOF HEIGHTS OF
PART OF LOT 24
REGISTERED PLAN 833
AND
PART OF LOT 3
BROKEN FRONT CONCESSION
FORMERLY THE GEOGRAPHIC TOWNSHIP OF EAST FLAMBOROUGH
NOW IN THE
CITY OF BURLINGTON
REGIONAL MUNICIPALITY OF HALTON
SCALE 1 : 500

J.D. BARNES LIMITED
© COPYRIGHT
METRIC DISTANCES AND/OR COORDINATES SHOWN ON THIS PLAN ARE IN METRES AND CAN BE CONVERTED TO FEET BY DIVIDING BY 0.3048.



THIS SKETCH HAS BEEN PREPARED FOR NATIONAL HOMES (PLAINS ROAD) INC.
FIELDWORK COMPLETED ON THE 13th DAY OF JUNE, 2017.
BOUNDARY INFORMATION HAS BEEN COMPILED FROM AVAILABLE REGISTRY OFFICE RECORDS, AND HAS NOT BEEN VERIFIED BY FIELD MEASUREMENTS.
BEFORE DIGGING, UNDERGROUND SERVICES SHOULD BE LOCATED ON SITE BY THE RESPECTIVE AGENCIES.

ELEVATION NOTE
ELEVATIONS SHOW HEREON ARE RELATED TO THE CANADIAN GEODETIC VERTICAL DATUM AND ARE DERIVED FROM:
CITY OF BURLINGTON BENCH MARK No. 44
ELEVATION = 98.754-metres
LOCAL BENCHMARK No. 1
CUT CROSS IN CONCRETE WALKWAY ON THE SOUTH SIDE OF PLAINS ROAD EAST APPROXIMATELY 3.0-metres EAST OF THE ENTRANCE TO No. 516 PLAINS ROAD EAST.
ELEVATION = 97.79-metres

J.D. BARNES LIMITED
LAND INFORMATION SPECIALISTS
401 WHEELABRATOR WAY, SUITE A, MILTON, ON L9T 3C1
T: (905) 875-9955 F: (905) 875-9956 www.jdbarnes.com

DRAWN BY: TAB	CHECKED BY: SA	REFERENCE NO.: 17-30-095-00
FILE: G:\17-30-095\00\Drawing\173009500B.dgn		DATED: JUNE 8, 2017
PLOTTED:		6/16/2017