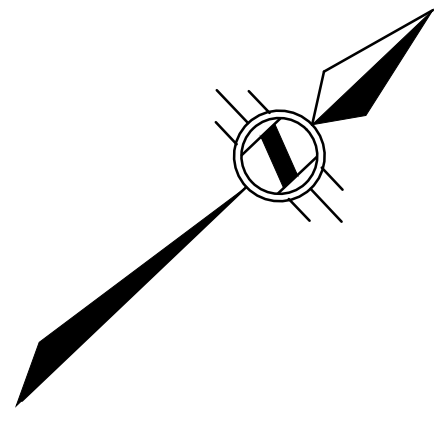


TOPOGRAPHIC SURVEY
OF PART OF
LOTS 34, 35 AND 36
REGISTERED PLAN 725PF
IN THE
CITY OF BURLINGTON
REGIONAL MUNICIPALITY OF HALTON

SCALE 1:150 METRIC
0 1.5 3 4.5 6 7.5 9 metres

S.D. McLAREN, O.L.S. - 2015



BENCHMARK:

MONUMENT 44

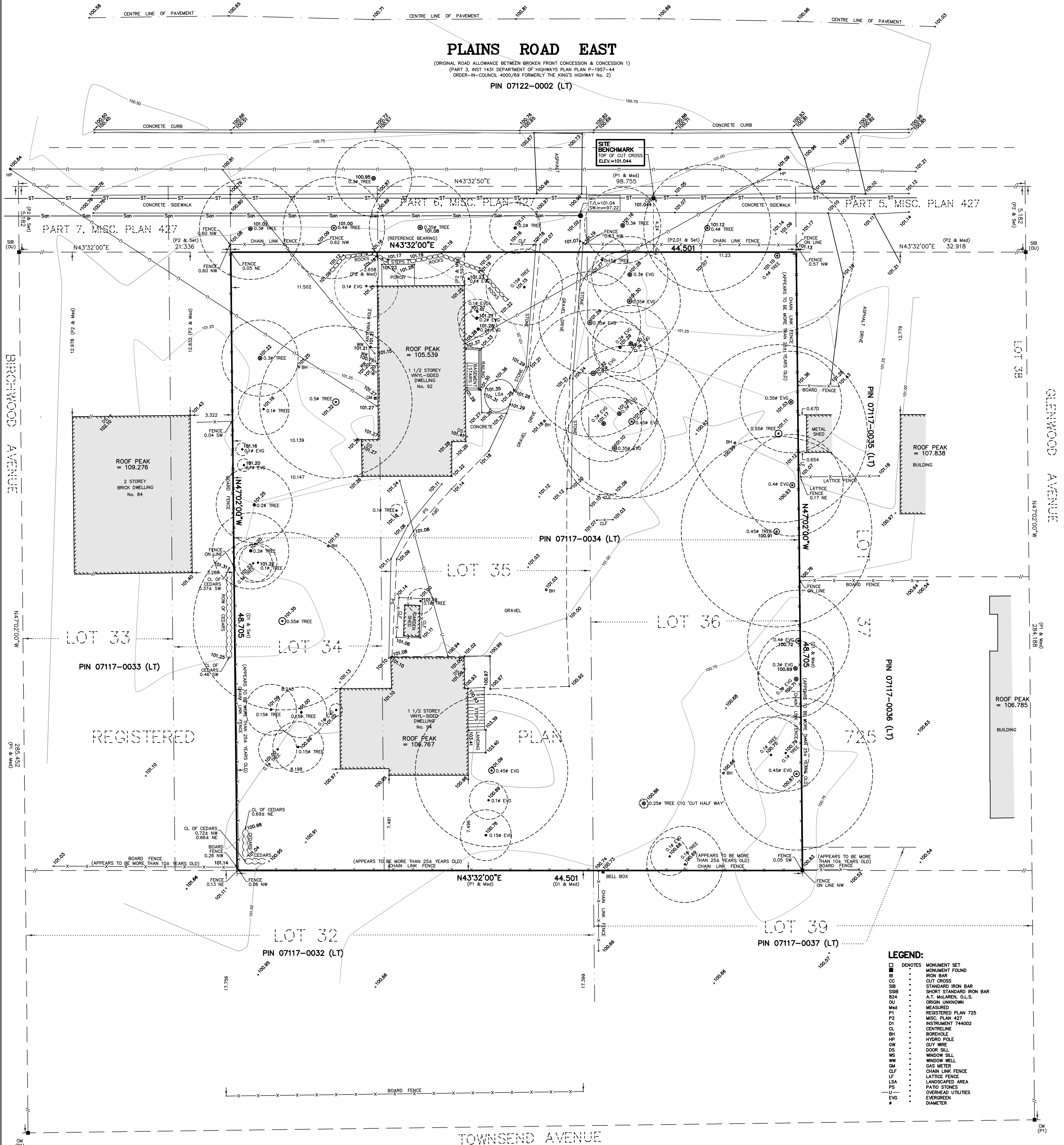
Maplehurst School, 481 Plains Road East (Highway No. 2) 1.92 km northeast of Waterdown Road; tablet in the front of southeast concrete foundation wall, 1.5m southwest of the most easterly of two entrances, 1.04m below red brick siding, No. 3488.

ELEVATION: 98.754 metres CGVD-1928:1978

PLAINS ROAD EAST

(ORIGINAL ROAD ALLOWANCE BETWEEN BROKEN FRONT CONCESSION & CONCESSION 1)
(PART 3, INST 1431 DEPARTMENT OF HIGHWAYS PLAN PLAN P-1957-44
ORDER-IN-COUNCIL 4000/03 FORMERLY THE KING'S HIGHWAY No. 2)

PIN 07122-0002 (LT)



LEGEND:

□	MONUMENT SET
■	MONUMENT FOUND
○	IRON BAR
●	CUT CROSS
○	STANDARD IRON BAR
○	SHORT STANDARD IRON BAR
○	A.T. McLAREN, O.L.S.
○	ORIGIN UNKNOWN
○	MEASURED
○	REGISTERED PLAN 725
○	MISC. PLAN 427
○	INSTRUMENT 744002
○	CENTRELINE
○	BOREHOLE
○	HYDRO POLE
○	OUT WIRE
○	DOOR SILL
○	WINDOW SILL
○	WINDOW WELL
○	GAS METER
○	CHAIN LINK FENCE
○	LATTICE FENCE
○	LANDSCAPED AREA
○	PATIO STONES
○	OVERHEAD UTILITIES
○	EVERGREEN
○	DIAMETER

METRIC NOTE
DISTANCES SHOWN ON THIS PLAN ARE IN METRES AND CAN BE CONVERTED TO FEET BY DIVIDING BY 0.3048

BEARING NOTE:
BEARINGS ARE ASTRONOMIC AND ARE REFERRED TO THE SOUTHEASTERLY LIMIT OF PLAINS ROAD EAST AS SHOWN ON C. REGISTERED PLAN 725427 AS BEING N43°32'00"E

MARCH 26, 2015
DATE
S. DAN McLAREN, O.L.S.

© S.D. McLAREN, O.L.S. - 2015. NO PERSON MAY COPY, REPRODUCE, DISTRIBUTE OR ALTER THIS PLAN IN WHOLE OR IN PART WITHOUT THE WRITTEN PERMISSION OF S.D. McLAREN, O.L.S.

A.T. McLaren Limited
LEGAL AND ENGINEERING SURVEYS
69 JOHN STREET SOUTH, SUITE 230
HAMILTON, ONTARIO, L9N 2S9
PHONE (905) 527-8559 FAX (905) 527-0032

Drawn: [] Checked: [] Over: [] Scale: 1:150 Date: [] Dep: No. 34581