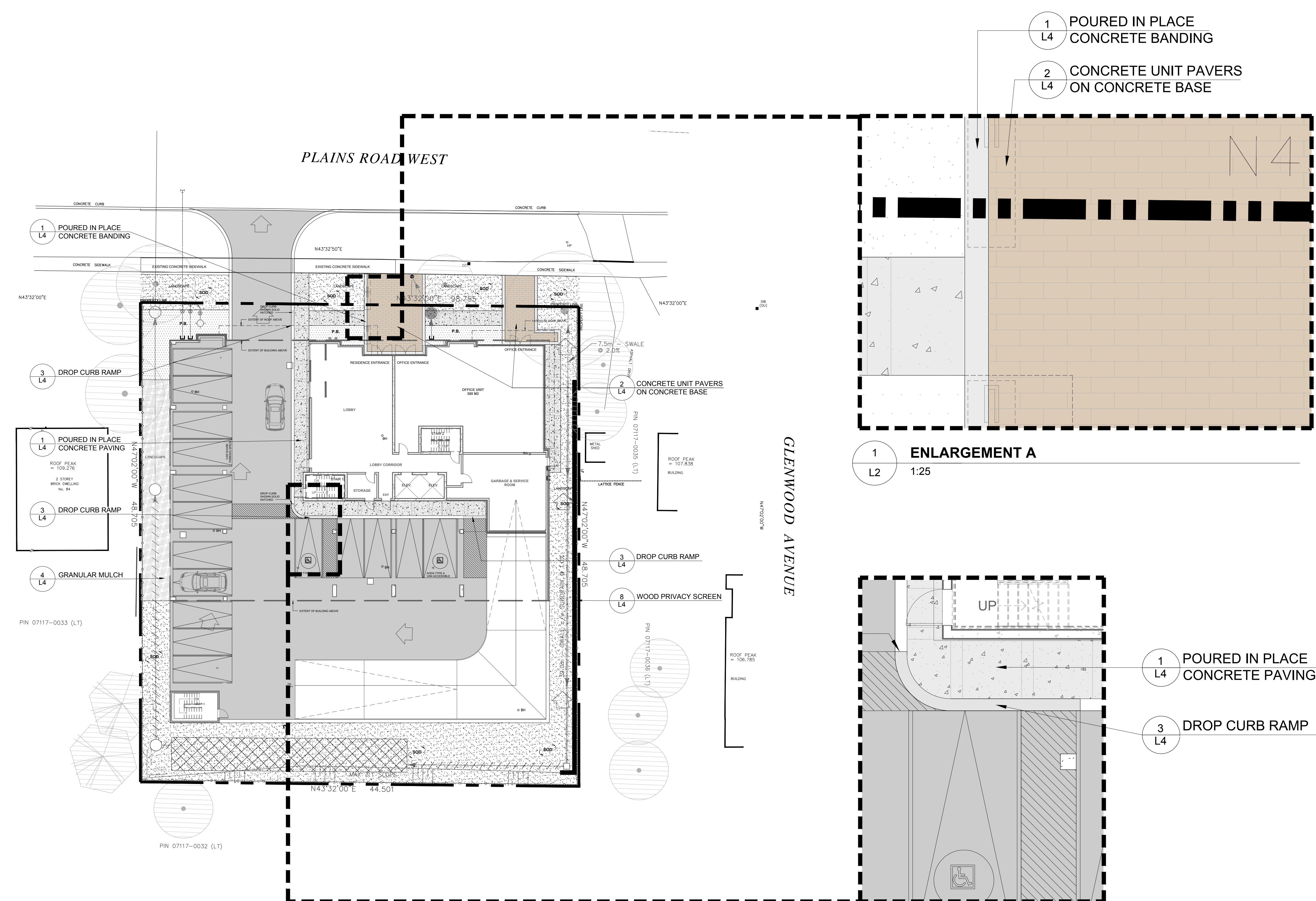


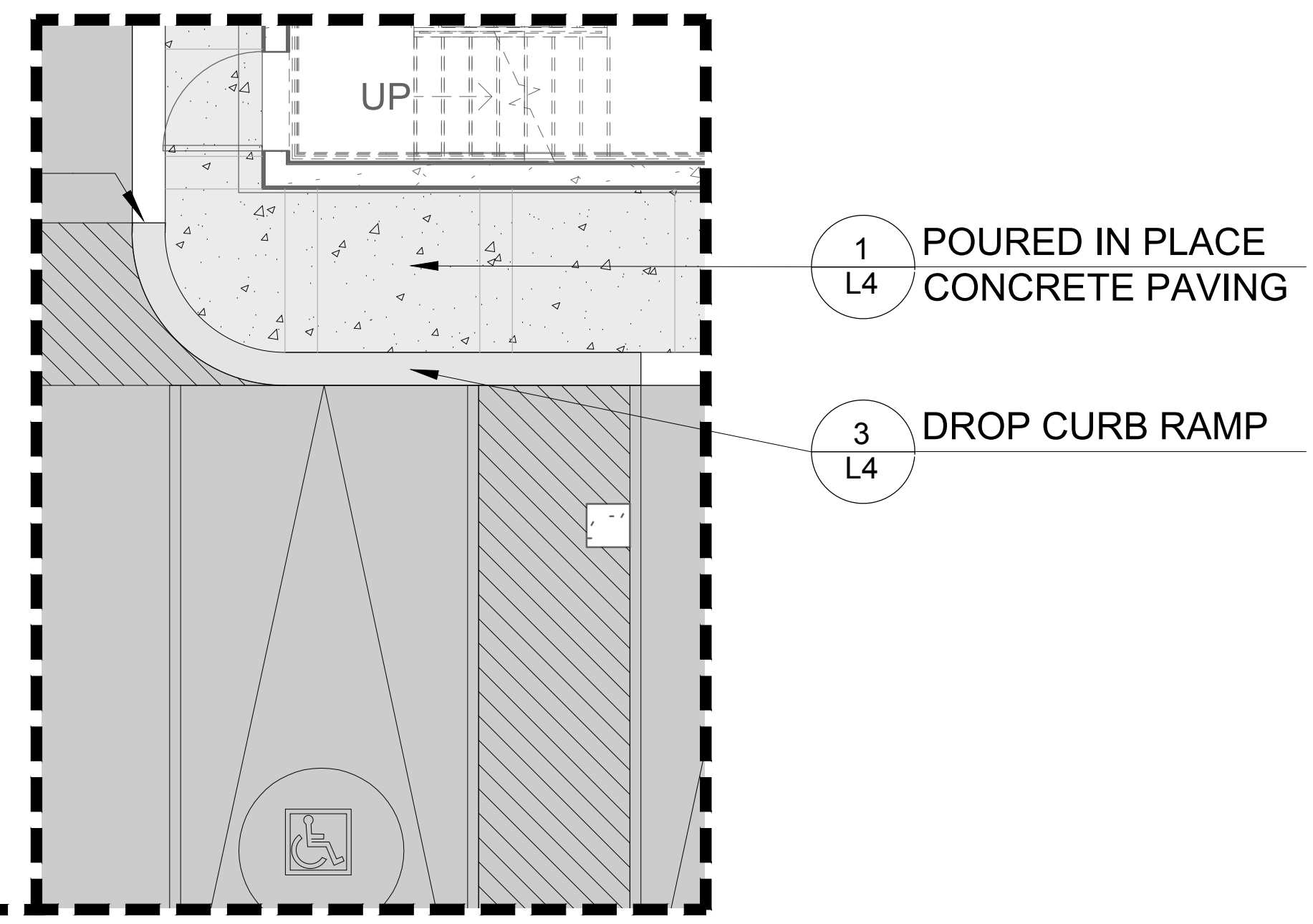
BIRCHWOOD AVENUE

PLAINS ROAD WEST

GLENWOOD AVENUE



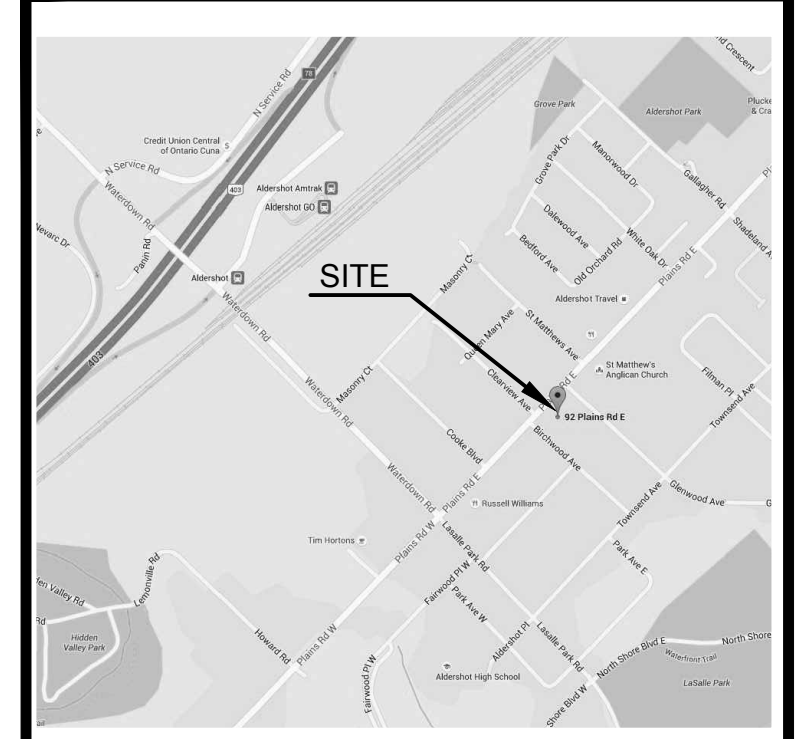
1 ENLARGEMENT A
L2 1:25



2 ENLARGEMENT B
L2 1:50

1 L4 POURED IN PLACE CONCRETE BANDING

2 L4 CONCRETE UNIT PAVERS ON CONCRETE BASE



KEY-PLAN

LEGEND

- EXISTING PROPERTY LINE
- EXISTING DECIDUOUS TREE TO BE RETAINED
- EXISTING CONIFEROUS TREE TO BE RETAINED
- PROPOSED CONCRETE PAVING
- PROPOSED CONCRETE UNIT PAVING
- PROPOSED PLANTING BED
- PROPOSED SOD
- PROPOSED GRANULAR MULCH
- PROPOSED WOOD PRIVACY SCREEN

SOURCE OF BASE INFORMATION:

Provided by:
MHC Planning, Urban Design & Landscape
Architecture, dated January 22, 2016.
File: "92Plain-SPA Jan18 2016.dwg."

Field work completed by:
North-South Environmental Inc. Campbellville, Ontario
September 24, 2015. (905) 854 1112

PLOT DATE: October 05, 2017

No.	DATE	DESCRIPTION	BY
1	10/05/17	ISSUED FOR OPA & ZBA	AZ
1	02/05/16	ISSUED FOR SITE PLAN APPROVAL	SP

REVISIONS

O'Connor Mokrycke CONSULTANTS
Innovative, outside thinking. SINCE 1984.
3310 South Service Road, Suite 205, Burlington, ON L7N 3M6
T: 905.681.7604 F: 905.681.2944 www.oconnor-consultants.com
LANDSCAPE ARCHITECTURE • ENVIRONMENTAL PLANNING • RESOURCE ANALYSIS

MIXED USE DEVELOPMENT
92 PLAINS ROAD EAST
BURLINGTON, ONTARIO

LAYOUT & MATERIALS PLAN

ISSUED FOR - OPA & ZBA

SCALE : 1:200	CHECKED : MM
DATE : Jan. 25, 16	DRAWING : L2
DRAWN : SP	PROJECT : 1328

Date: Oct. 05, 2017 - 1:03 pm Plotted by: ezarenbas Last Saved By: dffernero File Name: P:\O - PROJECTS\1328 - 92 Plains Rd., Burlington\6 - 92 Plains SPA - L2 - LAYOUT & MATERIALS.dwg

Issued for Site Plan Approval - October 5, 2017