

Path: P:\Work\TP114053\mnd.dwg\sub 2\Figure 07.dwg

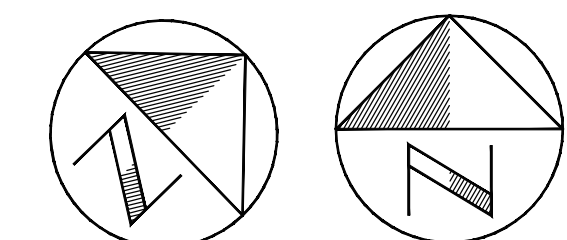
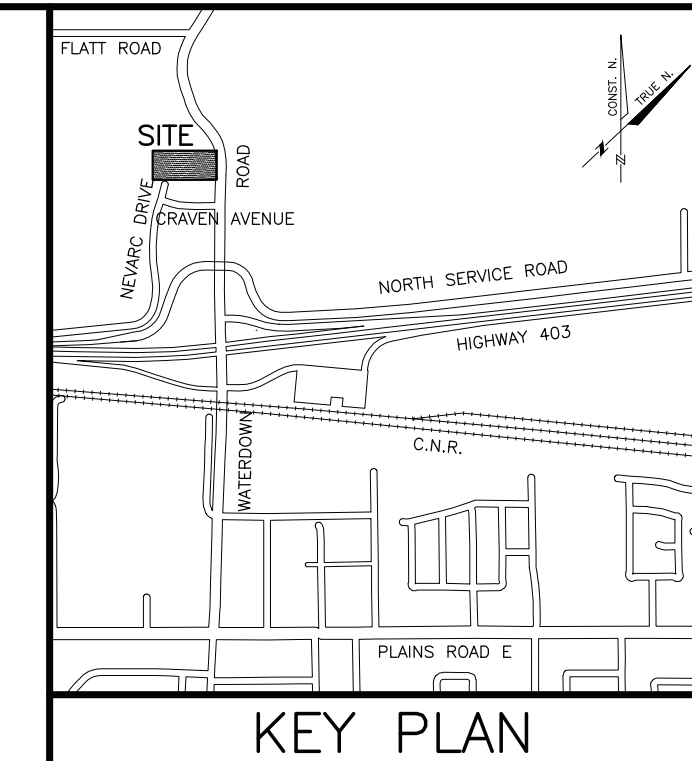
Plotted By: paul.poggioni
Last Saved By: paul.poggioni

2016-08-03
2016-07-25

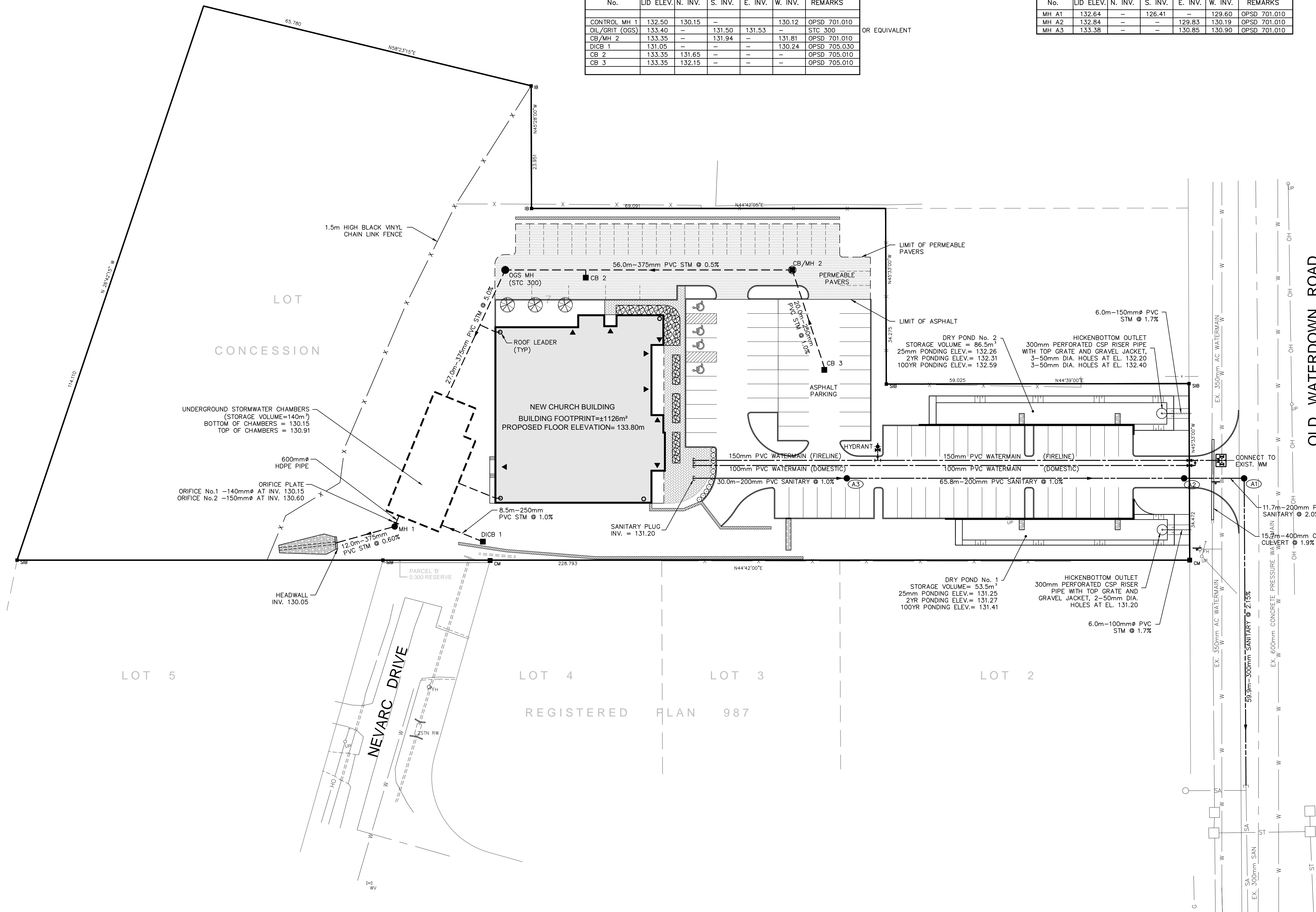
STORM MANHOLE SCHEDULE						
No.	LID ELEV.	N. INV.	S. INV.	E. INV.	W. INV.	REMARKS
CONTROL MH 1	132.50	130.15	-	-	130.12	OPSD 701.010
OIL/GRIT (OGS)	133.40	-	131.50	131.53	-	STC 300
CB/MH 2	133.35	-	131.84	-	131.81	OPSD 701.010
DICB 1	131.05	-	-	-	130.24	OPSD 705.030
CB 2	133.35	131.65	-	-	-	OPSD 705.010
CB 3	133.35	132.15	-	-	-	OPSD 705.010

OR EQUIVALENT

SANITARY MANHOLE SCHEDULE						
No.	LID ELEV.	N. INV.	S. INV.	E. INV.	W. INV.	REMARKS
MH A1	132.64	-	126.41	-	129.60	OPSD 701.010
MH A2	132.84	-	-	129.83	130.19	OPSD 701.010
MH A3	133.38	-	-	130.85	130.90	OPSD 701.010



TRUE NORTH CONSTRUCTION NORTH



LEGEND

- STORM SEWER
- SANITARY SEWER
- WATERMAIN
- STORM SERVICE
- SANITARY SERVICE
- WATER SERVICE
- EXISTING STORM SEWER
- EXISTING SANITARY SEWER
- EXISTING WATERMAIN
- EXISTING STORM SERVICE
- EXISTING SANITARY SERVICE
- EXISTING WATER SERVICE
- MANHOLE
- STORMCEPTOR
- CATCHBASIN/MANHOLE
- CATCHBASIN
- DOUBLE CATCHBASIN
- HYDRANT
- WATER VALVE
- WATER VALVE CHAMBER
- CURB STOP
- PLUG
- ROOF LEADER
- DOORS
- LIGHT STANDARD
- HYDRO PADMOUNT TRANSFORMER
- HYDRO POLE
- BELL PEDESTAL
- CABLE PEDESTAL
- EXISTING MANHOLE
- EXISTING CATCHBASIN/MANHOLE
- EXISTING CATCHBASIN
- EXISTING DOUBLE CATCHBASIN
- EXISTING HYDRANT
- EXISTING WATER VALVE
- EXISTING WATER VALVE CHAMBER
- EXISTING CURB STOP
- EXISTING PLUG
- EXISTING LIGHT STANDARD
- EXISTING PADMOUNT TRANSFORMER
- EXISTING POLE
- EXISTING BELL PEDESTAL
- EXISTING CABLE PEDESTAL

1350 WATERDOWN ROAD
BURLINGTON FELLOWSHIP
CANADIAN REFORMED CHURCH

FUNCTIONAL SITE
SERVICING PLAN



Scale
1:400
Consultant File No.
TP114053
Drawing No.
FIGURE 7