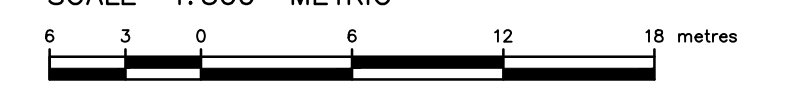
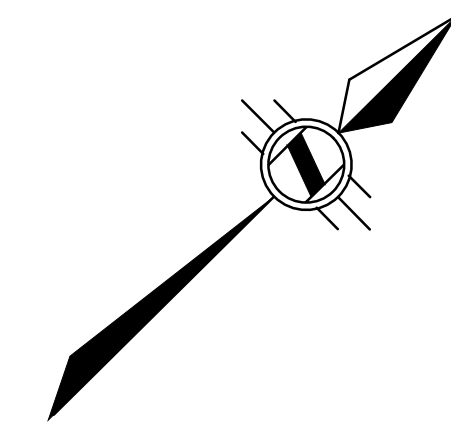


TOPOGRAPHIC SURVEY
 OF PART OF
LOT 7
 CONCESSION 1
 GEOGRAPHIC
 TOWNSHIP OF EAST FLAMBOROUGH
 IN THE
CITY OF BURLINGTON
 REGIONAL MUNICIPALITY OF HALTON

SCALE 1:300 METRIC

S.D. McLAREN, O.I.S. - 2013



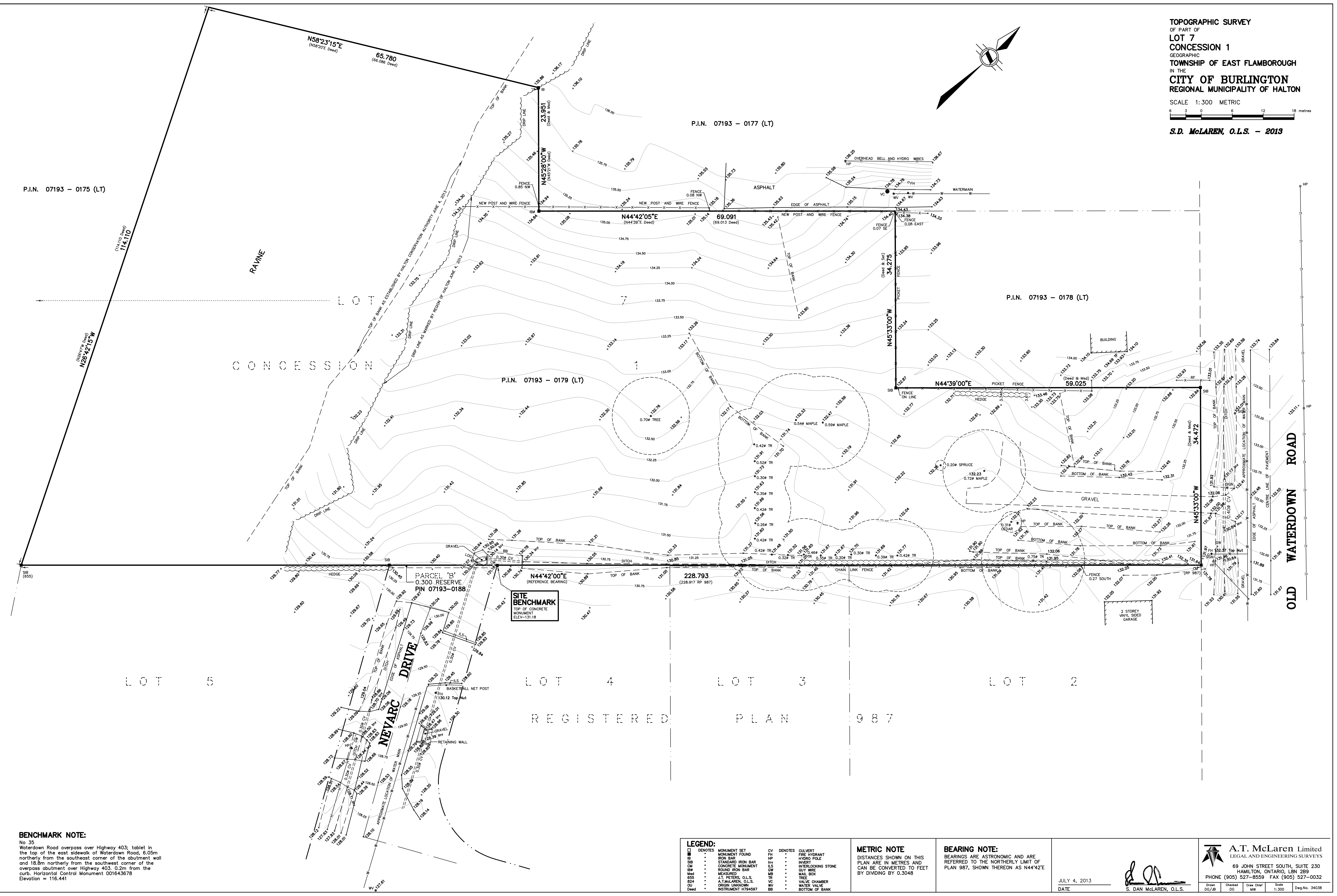
P.I.N. 07193 - 0175 (LT)

P.I.N. 07193 - 0177 (LT)

P.I.N. 07193 - 0178 (LT)

P.I.N. 07193 - 0179 (LT)

228.793
(228.917 RP 987)



BENCHMARK NOTE:
 No 35
 Waterdown Road overpass over Highway 403; tablet in the top of the east sidewalk of Waterdown Road, 6.05m northerly from the southeast corner of the abutment wall and 18.8m northerly from the southwest corner of the overpass abutment over Highway 403, 0.2m from the curb. Horizontal Control Monument 001643678
 Elevation = 116.441

LEGEND:

□	DENOTES MONUMENT SET	CV	DENOTES CULVERT
■	MONUMENT FOUND	HP	FIRE HYDRANT
IB	IRON BAR	HY	HYDRO POLE
SB	STANDARD IRON BAR	IN	INVERT
CM	CONCRETE MONUMENT	IS	INTERLOCKING STONE
IB	ROUND IRON BAR	GW	GUY WIRE
Me	MEASURED	MB	MAIL BOX
655	J.T. PETERS, O.I.S.	TR	TREE
654	ORIGIN UNKNOWN	VC	VALVE CHAMBER
OU	INSTRUMENT #724597	WV	WATER VALVE
		BB	BOTTOM OF BANK

METRIC NOTE
 DISTANCES SHOWN ON THIS PLAN ARE IN METRES AND CAN BE CONVERTED TO FEET BY DIVIDING BY 0.3048

BEARING NOTE:
 BEARINGS ARE ASTROMONIC AND ARE REFERRED TO THE NORTHERLY LIMIT OF PLAN 987, SHOWN THEREON AS N44°42'E

JULY 4, 2013
 DATE

S. Dan McLaren
 S. DAN McLAREN, O.I.S.

A.T. McLaren Limited
 LEGAL AND ENGINEERING SURVEYS

69 JOHN STREET SOUTH, SUITE 230
 HAMILTON, ONTARIO, L8N 2B9

PHONE (905) 527-8559 FAX (905) 527-0032

Drawn: DGM/AB Checked: DGM Drawn: SML Scale: 1:300 Drawn: No. 34038