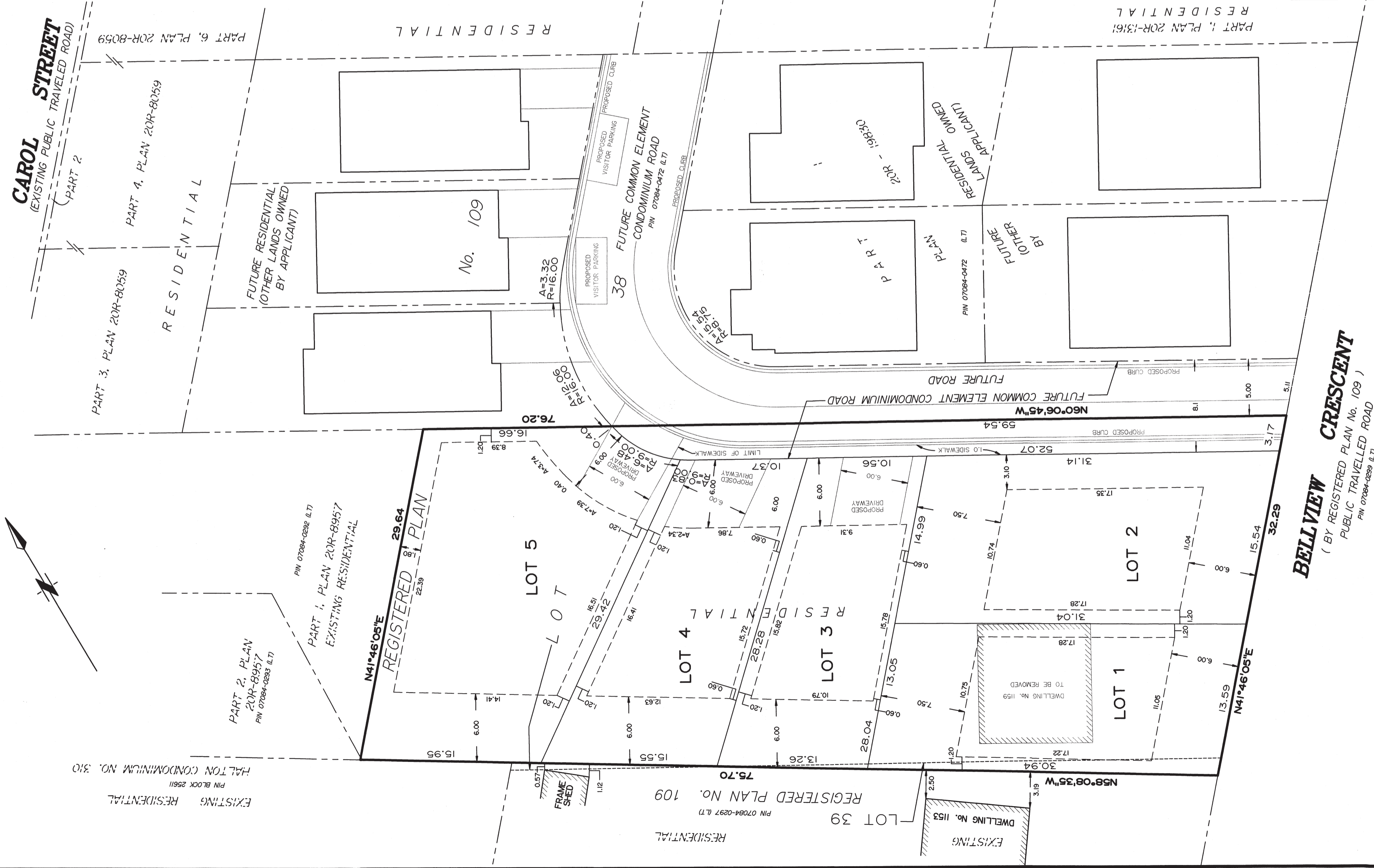
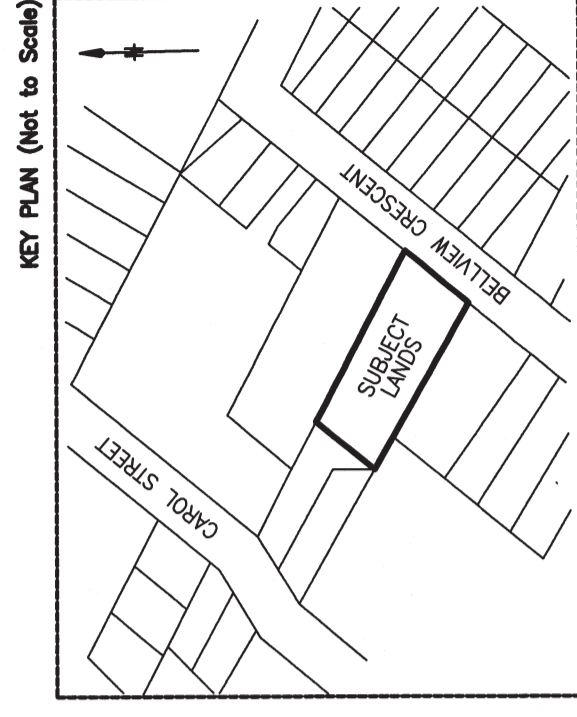


CONCEPT PLAN FOR  
**3 SUBDIVISION LOTS ON  
COMMON ELEMENTS CONDOMINIUM ROAD  
AND 2 LOTS ON BELVIEW CRESCENT**

BEING No. 1159 BELVIEW CRESCENT  
PART OF LOTS 38 & 39  
REGISTERED PLAN No. 109  
CITY OF BURLINGTON  
REGIONAL MUNICIPALITY OF HALTON

SCALE 1 : 250  
0 5 15 METRES

ASHENHURST NOUWENS & ASSOCIATES INC.  
COPYRIGHT 2017 ©



**METRIC NOTE**  
DISTANCES SHOWN ON THIS PLAN ARE IN METRES AND  
CAN BE CONVERTED TO FEET BY DIVIDING BY 0.3048.



**NOTE**  
LOT FRONTAGE IS CALCULATED AS PER THE CITY OF BURLINGTON LOT WIDTH  
DEFINITION AND THEREFORE MAY DIFFER SLIGHTLY FROM THE FRONT LOT LINE  
DIMENSION.

**AREA AND FRONTAGE TABLE**

LOT	LOT AREA (sq m)	FRONTAGE @ 7.1m FROM STREET	BUILDING ENVELOPE AREA (sq m)
LOT 1	406.1	13.46	184.8
LOT 2	465.2	15.41	184.8
LOT 3	325.6	11.22	154.2
LOT 4	360.4	12.17	170.9
LOT 5	574.9	13.75	358.9
PROPOSED ROAD	177.1	N/A	N/A

Dec 13 2017 DATE

HARRY KALANTZAKOS  
ONTARIO LAND SURVEYOR

**BELVIEW CRESCENT**  
(BY REGISTERED PLAN No. 109)  
PUBLIC TRAVELLED ROAD  
PIN 07084-0229 (L.T.)

**ASHENHURST NOUWENS & ASSOCIATES INC.**  
PROFESSIONAL ENGINEERS & ONTARIO LAND SURVEYORS  
225 KING WILLIAM STREET, SUITE 204, HAMILTON, ONTARIO L8R 1B1  
TELEPHONE: (905) 529-6316  
(905) 529-4314  
FAX: (905) 529-6651  
e-mail: anl@AshenhurstNouwens.com

**ANA**  
SINCE 1956

DRAWN BY W.S. CALCD BY H.K. FILE No. 14030-CONCEPT R14