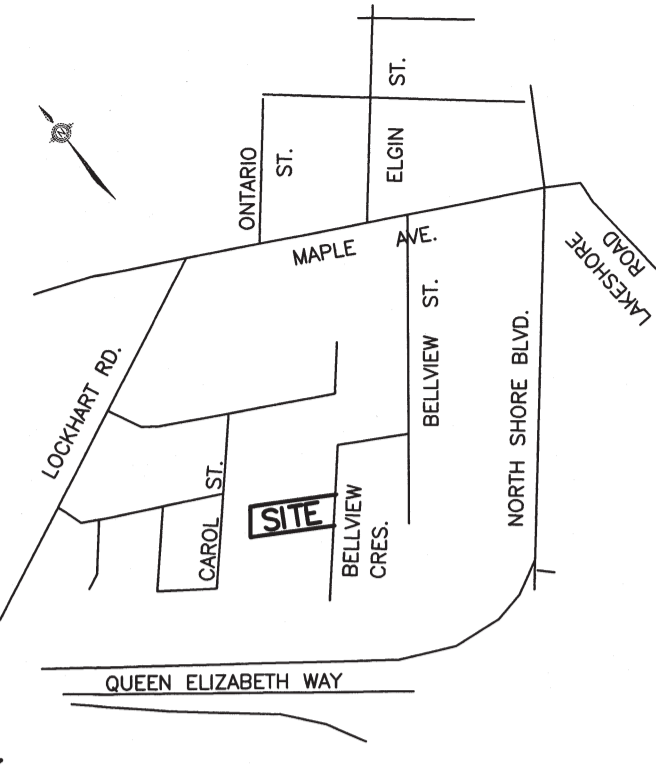
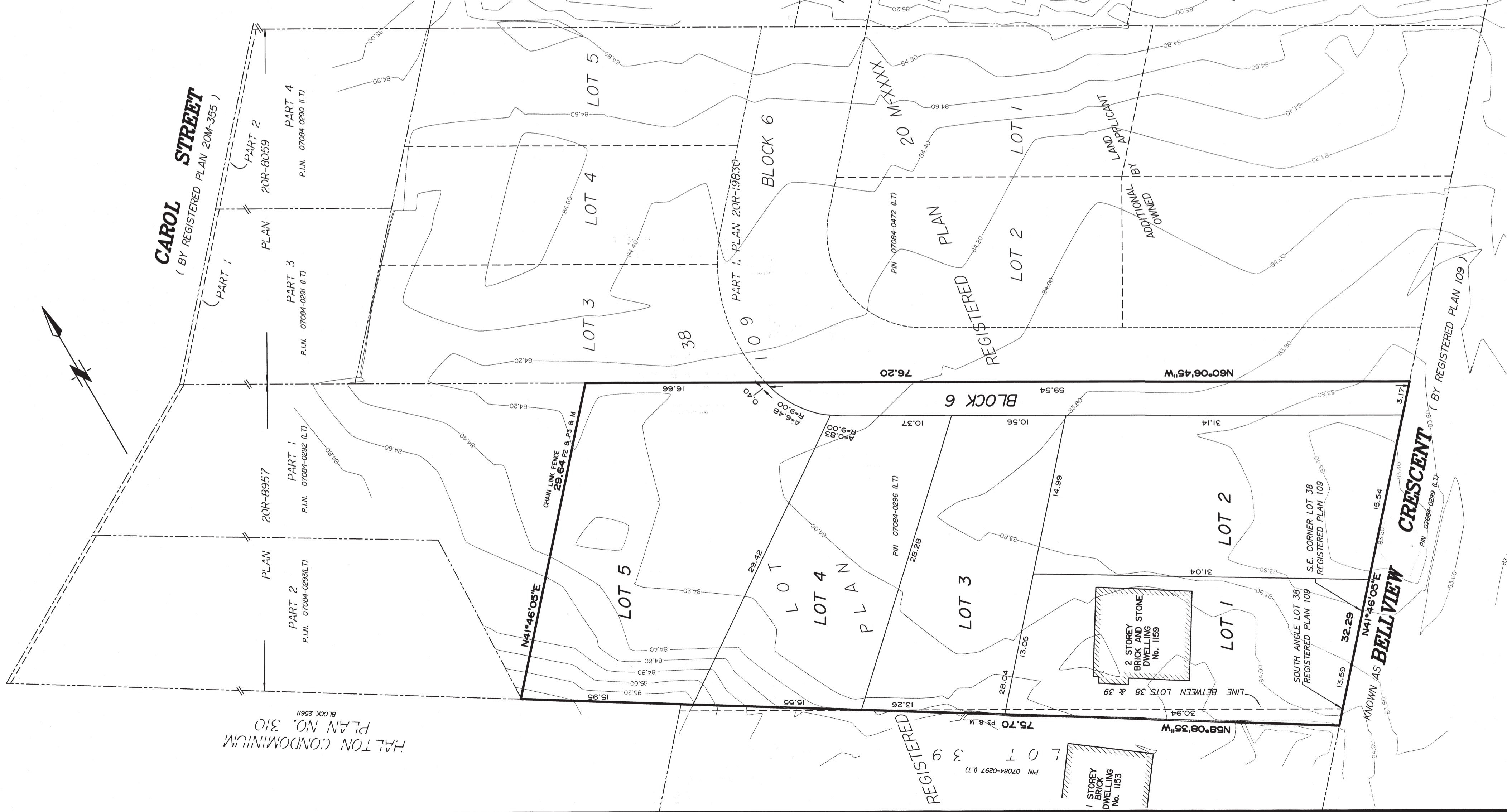


**SITE KEY PLAN**  
NOT TO SCALE



**CAROL STREET**  
( BY REGISTERED PLAN 20M-355 )



DRAFT PLAN OF SUBDIVISION OF :  
**PART OF LOTS 38 & 39**  
REGISTERED PLAN 109  
IN THE  
**CITY OF BURLINGTON**  
REGIONAL MUNICIPALITY OF HALTON

SCALE 1 : 250



**METRIC NOTE**  
DISTANCES SHOWN ON THIS PLAN ARE IN METRES AND CAN BE CONVERTED TO FEET BY DIVIDING BY 0.3048.

**LAND USE SCHEDULE**

USE	No. OF UNITS	LOTS/BLOCKS	AREA (SQ. M.)
SINGLE FAMILY LOTS FRONTING ON PUBLIC ROAD	2	LOTS 1 & 2	871.3
SINGLE FAMILY LOTS FRONTING ON PUBLIC ROAD	3	LOTS 3, 4 & 5	1260.9
PRIVATE ROADWAY		BLOCK 6	177.1
<b>TOTAL SITE AREA = 2309.3 SQ.M.</b>			

**SCHEDULE RE: SECTION 51(17) OF THE PLANNING ACT**

- A. SHOWN
- B. SHOWN
- C. SHOWN
- D. DETACHED DWELLINGS
- E. SHOWN
- F. SHOWN
- G. SHOWN
- H. MUNICIPAL WATER
- I. CLAY
- J. SHOWN
- K. ALL SERVICES TO BE AVAILABLE
- L. SHOWN

**OWNER'S CERTIFICATE**

I, IN ACCORDANCE WITH THE SUBDIVISION ACT AND THE PLANNING ACT I HEREBY AUTHORIZE ASHENHURST NOUWENS & ASSOCIATES INC. TO PREPARE AND SUBMIT THIS PLAN OF SUBDIVISION FOR APPROVAL.

OWNER: 1435487 Ontario Inc.

DATE Dec 17, 2017

I HAVE AUTHORITY TO BIND THE CORPORATION

**SURVEYOR'S CERTIFICATE**

I CERTIFY THAT THE BOUNDARIES OF THE LANDS TO BE SUBDIVIDED, AS SHOWN ON THIS PLAN AND THEIR RELATIONSHIP TO ADJACENT LANDS, ARE ACCURATELY SHOWN.

DATE Dec 12, 2017

*[Signature]*  
HARRY KAKANTZAKOS  
ONTARIO LAND SURVEYOR

**ASHENHURST NOUWENS & ASSOCIATES INC.**  
PROFESSIONAL ENGINEERS & ONTARIO LAND SURVEYORS  
225 KING WILLIAM STREET, SUITE 204, HAMILTON, ONTARIO L8R 1B1

TELEPHONE: (905) 529-6316  
(905) 529-4314  
FAX: (905) 529-6651  
e-mail: [an@AshenhurstNouwens.com](mailto:an@AshenhurstNouwens.com)



DRAWN BY W.S. CALCD BY H.K. CHKD BY FILE No. 14030 - DPL-1159