

KEY PLAN
NTS

LEGEND

- PROPOSED CATCHBASIN
- PROPOSED DOUBLE CATCHBASIN
- PROPOSED CATCHBASIN MANHOLE
- PROPOSED STORM MANHOLE
- PROPOSED SANITARY MANHOLE
- PROPOSED FIRE HYDRANT
- PROPOSED VALVE & BOX
- PROPOSED PLUG
- PROPOSED WATER METER
- PROPOSED DETECTOR VALVE IN CHAMBER
- PROPOSED DRAINAGE DIRECTION
- PROPOSED SWALE DRAINAGE DIRECTION
- OVERLAND FLOW DIRECTION
- PROPOSED FINISHED ELEVATION
- EXISTING ELEVATION
- EXISTING ELEVATION TO BE MATCHED
- EXISTING SANITARY SERVICE
- EXISTING STORM SERVICE
- EXISTING WATER SERVICE
- TREE PROTECTION ZONE (TPZ)
- TREE NUMBER
- TREE TO BE REMOVED

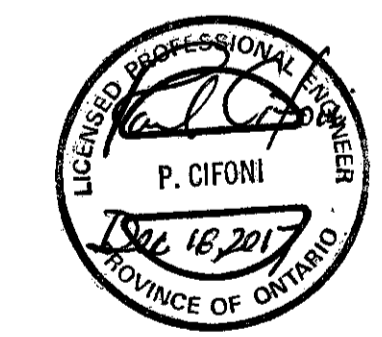
ISSUED FOR DRAFT PLAN OF SUBDIVISION APPLICATION (1159 BELLVIEW CRESCENT)			
NO.	DATE	BY/DRAWN	REVISIONS
1	DEC/13/17	PC/ZG	

CAD FILE: 1517051.dwg | PLOT SCALE: 1:1 | PLOT DATE: 12/20/17

BENCHMARK

1. ELEVATIONS HEREON ARE DERIVED FROM THE CITY OF BURLINGTON BENCHMARK No. 043820124 ELEVATION = 84.163 METRES.

2. THE TOPOGRAPHIC DETAIL SHOWN HEREON WAS ACQUIRED ON MONTH NOVEMBER, 2016 BY ASHENHURST NOUWENS & ASSOCIATES INC., ONTARIO LAND SURVEYORS.



DESIGNED BY: [Signature] APPROVED BY: [Signature]

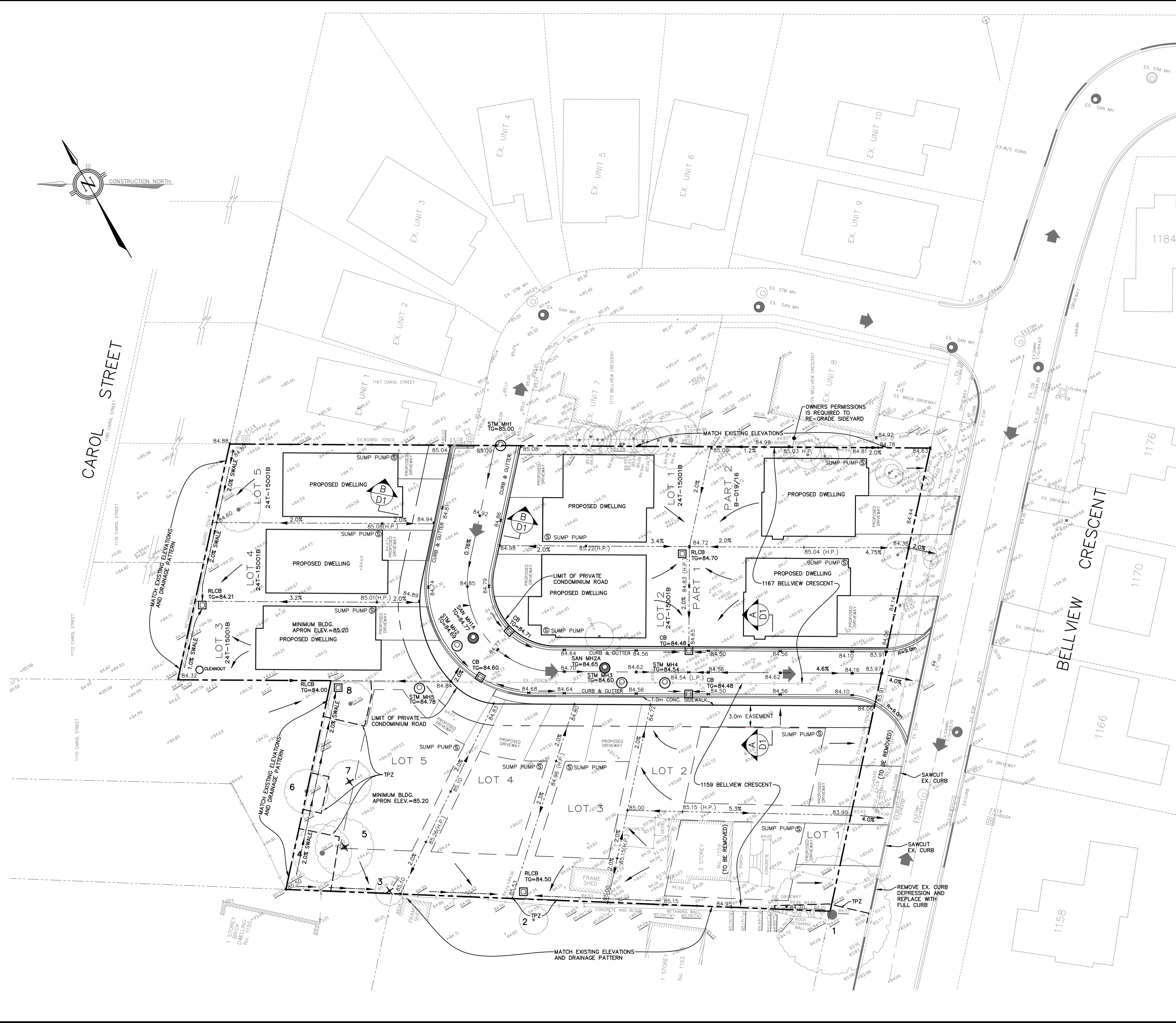
Consultant
TRAFALGAR ENGINEERING LTD.
481 MORDEN ROAD OAKVILLE, ONTARIO L6K 3W6
TEL: (905) 338-3366 FAX: (905) 338-7734
tel@trafalgareng.com

Municipality
CITY OF BURLINGTON
REGIONAL MUNICIPALITY OF HALTON

Title
MARKAY HOMES
1167/1159
BELLVIEW CRESCENT

DRAWING TITLE
GRADING PLAN

SCALE	1:250	DESIGNED BY	PC	PROJECT No.	1517
DRAWN BY	ZG	CHECKED BY	PC	PLAN No.	G1
DATE	20/12/2016	SHEET	1 OF 1		



FILENAME: P:\1517 Markay Homes\Drawings\DWG\1517051.dwg
PLOT DATE: Dec 20, 2017 8:40am