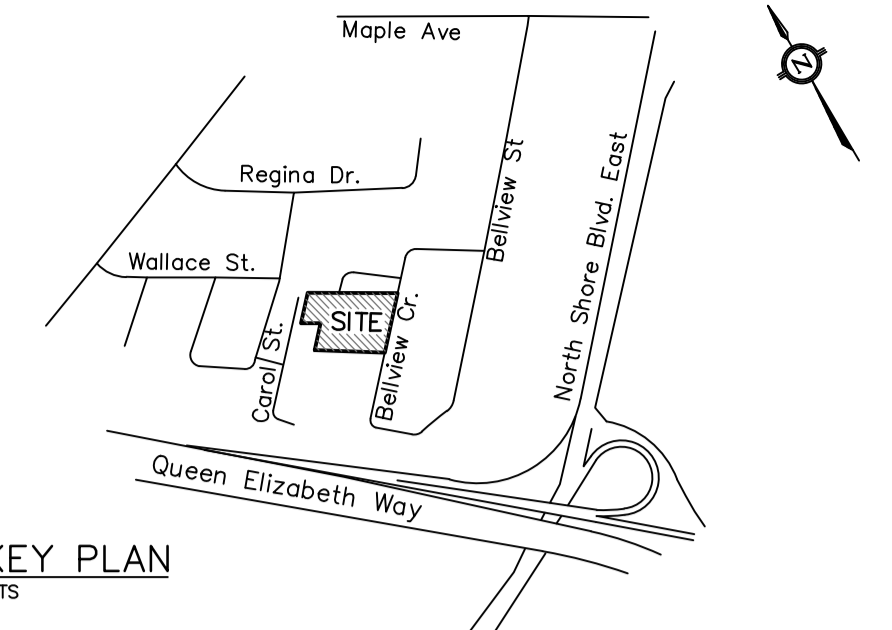
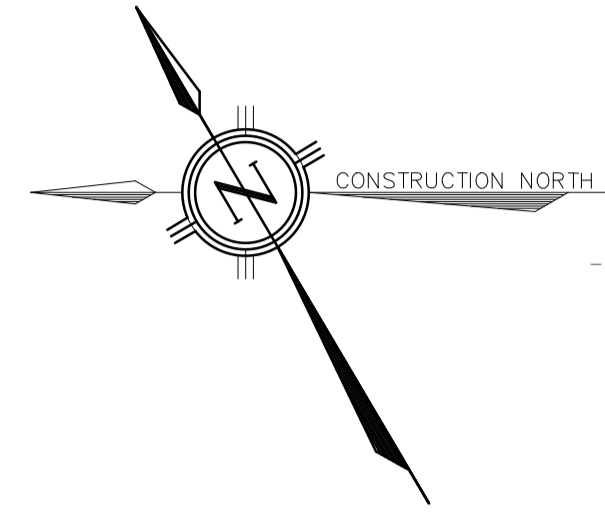


FILENAME: P:\1517 Markay Homes\Drawings\DWG\1517051.dwg
 PLOTTED: Dec 20, 2017 - 8:42am



KEY PLAN
NTS

LEGEND

- PROPOSED CATCHBASIN
- ⊕ PROPOSED DOUBLE CATCHBASIN
- ⊙ PROPOSED CATCHBASIN MANHOLE
- ⊙ PROPOSED STORM MANHOLE
- ⊙ PROPOSED SANITARY MANHOLE
- ⊙ PROPOSED FIRE HYDRANT
- ⊙ PROPOSED VALVE & BOX
- ⊙ PROPOSED PLUG
- ⊙ PROPOSED WATER METER
- ⊙ PROPOSED DETECTOR VALVE IN CHAMBER
- PROPOSED DOUBLE HOUSE SERVICES
- PROPOSED SINGLE HOUSE SERVICE
- PROPOSED WATER SERVICE
- PROPOSED STORM SEWER
- PROPOSED SANITARY SEWER
- PROPOSED WATERMAIN
- PROPOSED DRAINAGE DIRECTION
- PROPOSED SWALE DRAINAGE DIRECTION
- EXISTING SANITARY SERVICE
- EXISTING STORM SERVICE
- EXISTING WATER SERVICE

ISSUED FOR DRAFT PLAN OF SUBDIVISION APPLICATION (1159 BELLVIEW CRESCENT)			
NO.	DATE	BY/DRAWN	REVISIONS
1	DEC/13/17	PC/ZG	

CAD FILE: 1517051.dwg | PLOT SCALE: 1:1 | PLOT DATE: 12/20/17

BENCHMARK
 1. ELEVATIONS HEREON ARE DERIVED FROM THE CITY OF BURLINGTON BENCHMARK No. 043820124 ELEVATION = 84.163 METRES.
 2. THE TOPOGRAPHIC DETAIL SHOWN HEREON WAS ACQUIRED ON MONTH NOVEMBER, 2016 BY ASHENHURST NOUWENS & ASSOCIATES INC., ONTARIO LAND SURVEYORS.



DESIGNED BY: [Signature] APPROVED BY: [Signature]

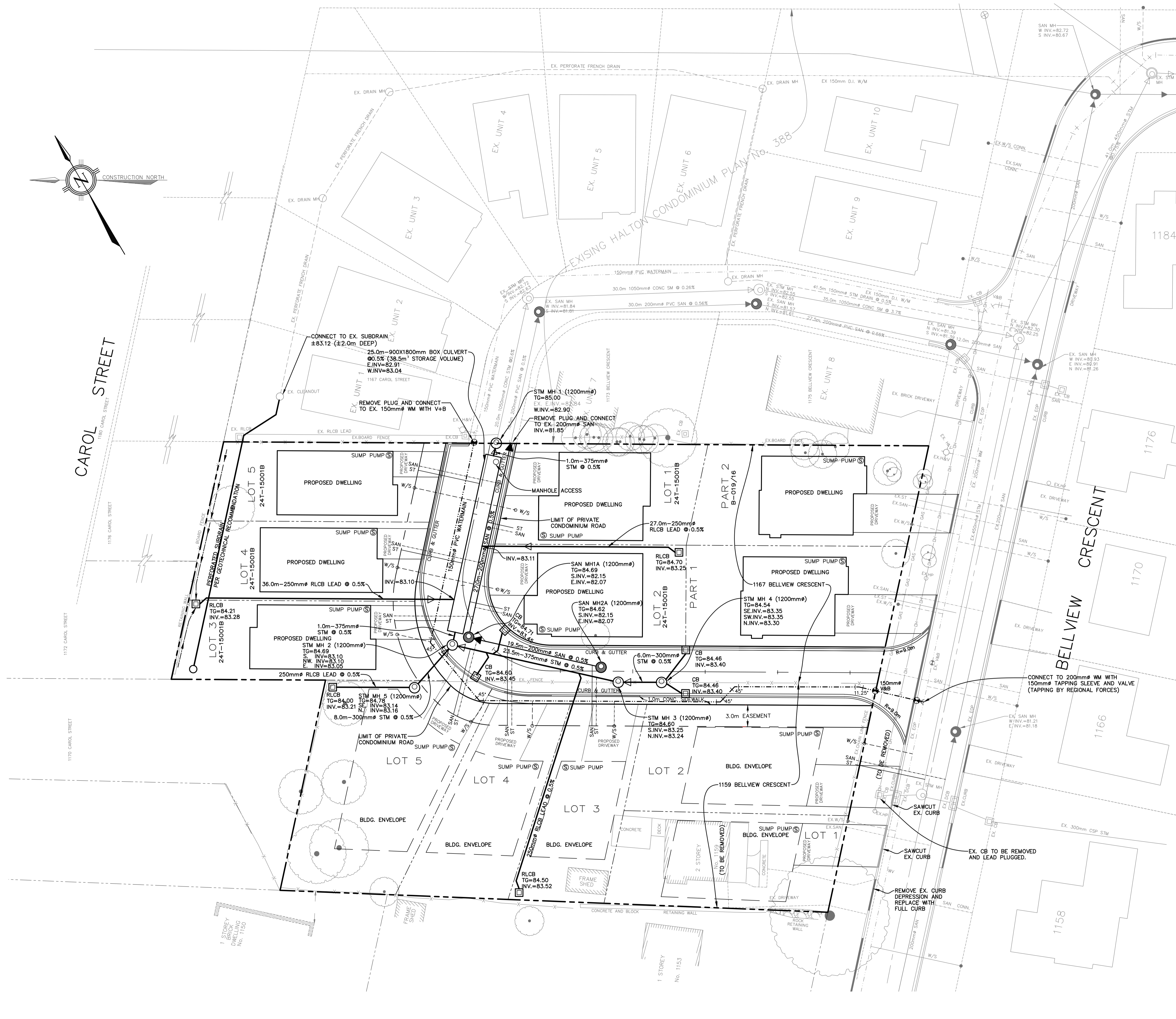
Consultant
TRAFALGAR ENGINEERING LTD.
 481 MORDEN ROAD OAKVILLE, ONTARIO L6K 3W6
 TEL: (905) 338-3366 FAX: (905) 338-7734
 tel@trafalgareng.com

Municipality
CITY OF BURLINGTON
 REGIONAL MUNICIPALITY OF HALTON

Title
MARKAY HOMES
 1167/1159
 BELLVIEW CRESCENT

DRAWING TITLE
SERVICING PLAN

SCALE	1:250	DESIGNED BY	PC	PROJECT No.	1517
DRAWN BY	ZG	CHECKED BY	PC	PLAN No.	S1
DATE	20/12/2016	SHEET	1 OF 1		



CAROL STREET

BELLVIEW CRESCENT

PART 2
B-019/16

1159 BELLVIEW CRESCENT

1172 CAROL STREET
1176 CAROL STREET
1180 CAROL STREET
1184
1176
1170
1166
1158