

This drawing, as an instrument of service, is provided by and is the property of Graziani + Corazza Architects Inc. The contractor must verify and accept responsibility for all dimensions and conditions on site and must notify Graziani + Corazza Architects Inc. of any variations from the supplied information. Graziani + Corazza Architects Inc. is not responsible for the accuracy of survey, structural, mechanical, electrical, etc., engineering information shown on this drawing. Refer to the appropriate engineering drawings before proceeding with the work. Construction must conform to all applicable codes and requirements of the authorities having jurisdiction. Unless otherwise noted, no investigation has been undertaken or reported on by this office in regard to the environmental condition of this site.

This drawing is not to be scaled. All architectural symbols indicated on this drawing are graphic representations only.

Conditions for electronic information transfer

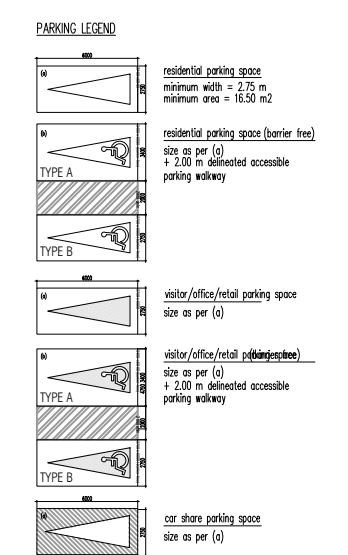
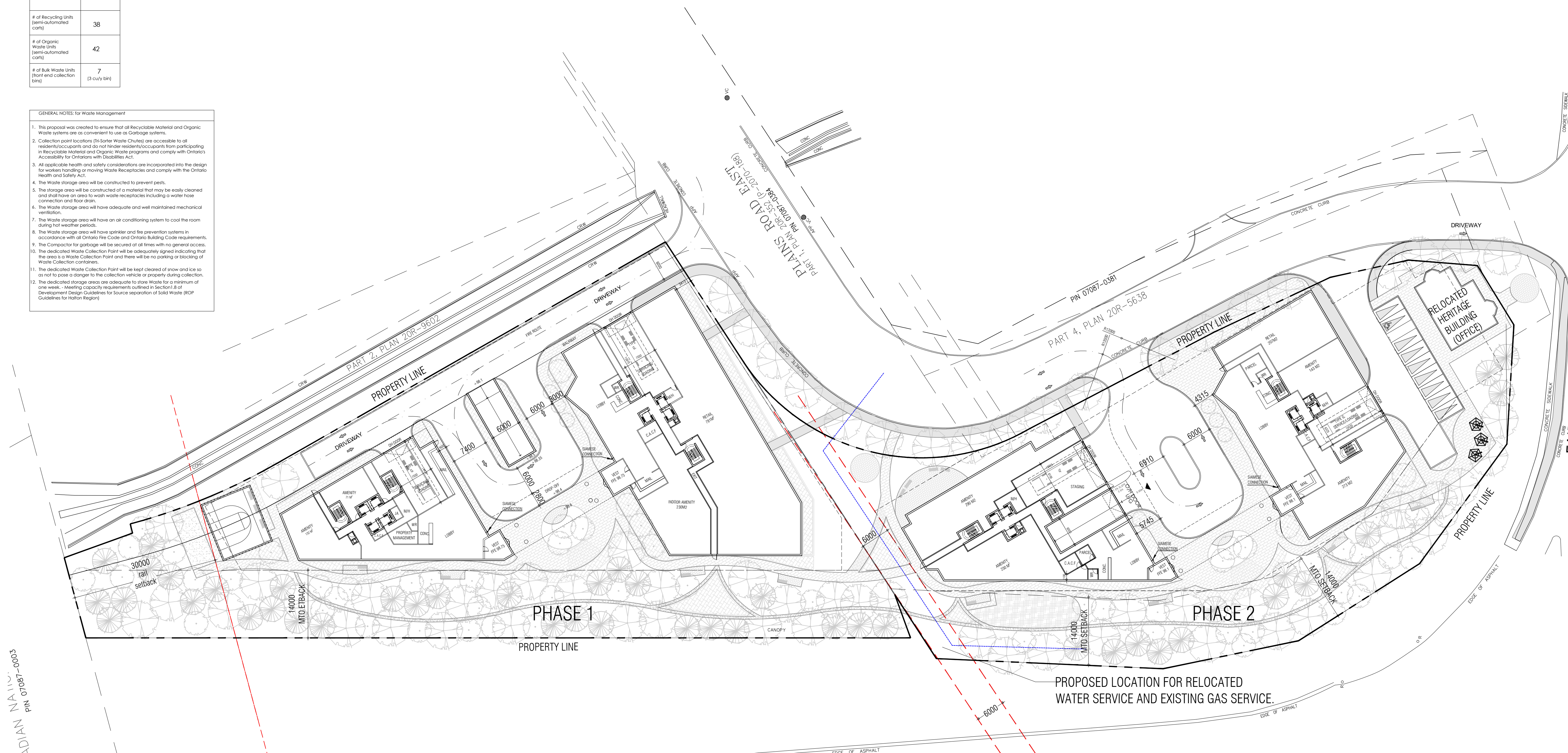
Electronic information is supplied to the other associated firms to assist them in the execution of their work/review. The recipient firms must determine the completeness/appropriateness/relevance of the information in respect to their particular responsibility.

- Graziani + Corazza Architects Inc. shall not be responsible for:
1. Errors, omissions, incompleteness due to loss of information in whole or part when information is transferred.
 2. Transmission of any virus or damage to the receiving electronic system when information is transferred.

# of Recycling Units (semi-automated carts)	38
# of Organic Waste Units (semi-automated carts)	42
# of Bulk Waste Units (front end collection bins)	7 (3 curvy bin)

GENERAL NOTES for Waste Management

1. This proposal was created to ensure that all Recyclable Material and Organic Waste systems are as convenient to use as Garbage systems.
2. Collection point locations (in former Waste Chutes) are accessible to all residents/occupants and do not hinder residents/occupants from participating in Recyclable Material and Organic Waste programs and comply with Ontario's Accessibility for Ontarians with Disabilities Act.
3. All applicable health and safety considerations are incorporated into the design for workers handling or moving Waste Receptacles and comply with the Ontario Health and Safety Act.
4. The Waste storage area will be constructed to prevent pests.
5. The storage area will be constructed of material that may be easily cleaned and shall have an area to wash waste receptacles including a water hose connection and floor drain.
6. The Waste storage area will have adequate and well maintained mechanical ventilation.
7. The Waste storage area will have an air conditioning system to cool the room during hot weather periods.
8. The Waste storage area will have sprayer and fire prevention systems in accordance with all Ontario Fire Code and Ontario Building Code requirements.
9. The Compactor for garbage will be secured at all times with no general access.
10. The dedicated Waste Collection Point will be adequately signed indicating that the area is a Waste Collection Point and there will be no parking or blocking of Waste Collection containers.
11. The dedicated Waste Collection Point will be kept cleared of snow and ice so as not to pose a danger to the collection vehicle or property during collection.
12. The dedicated storage areas are adequate to store waste for a minimum of one week - Meeting capacity requirements outlined in Section 8.8 of Development Design Guidelines for Source Separation of Solid Waste (RCA Guidelines for Halton Region)



issued for revisions

GRAZIANI + CORAZZA ARCHITECTS INC.

BERARDO E. GRAZIANI
LICENCE 4684

1320 Sheawon Drive, Suite 100, Mississauga, Ontario, L4W 1C3
Phone: 905.795.2601 Fax: 905.795.2844 www.gc-architects.com

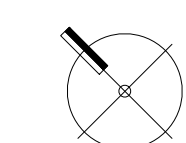
Residential Development

PLAINS RD MASTER PLAN

Burlington Ontario

Project Architect: B. Graziani
 Assistant Designer: S. Salari/R. Alani
 Drawn By: S. Salari/R. Alani
 Checked By: D. Biase
 Plot Date: May. 7, 2021
 Job #: 1572.17

WASTE MANAGEMENT PLAN



1:450

A309

TITLEBLOCK SIZE: 610 x 900