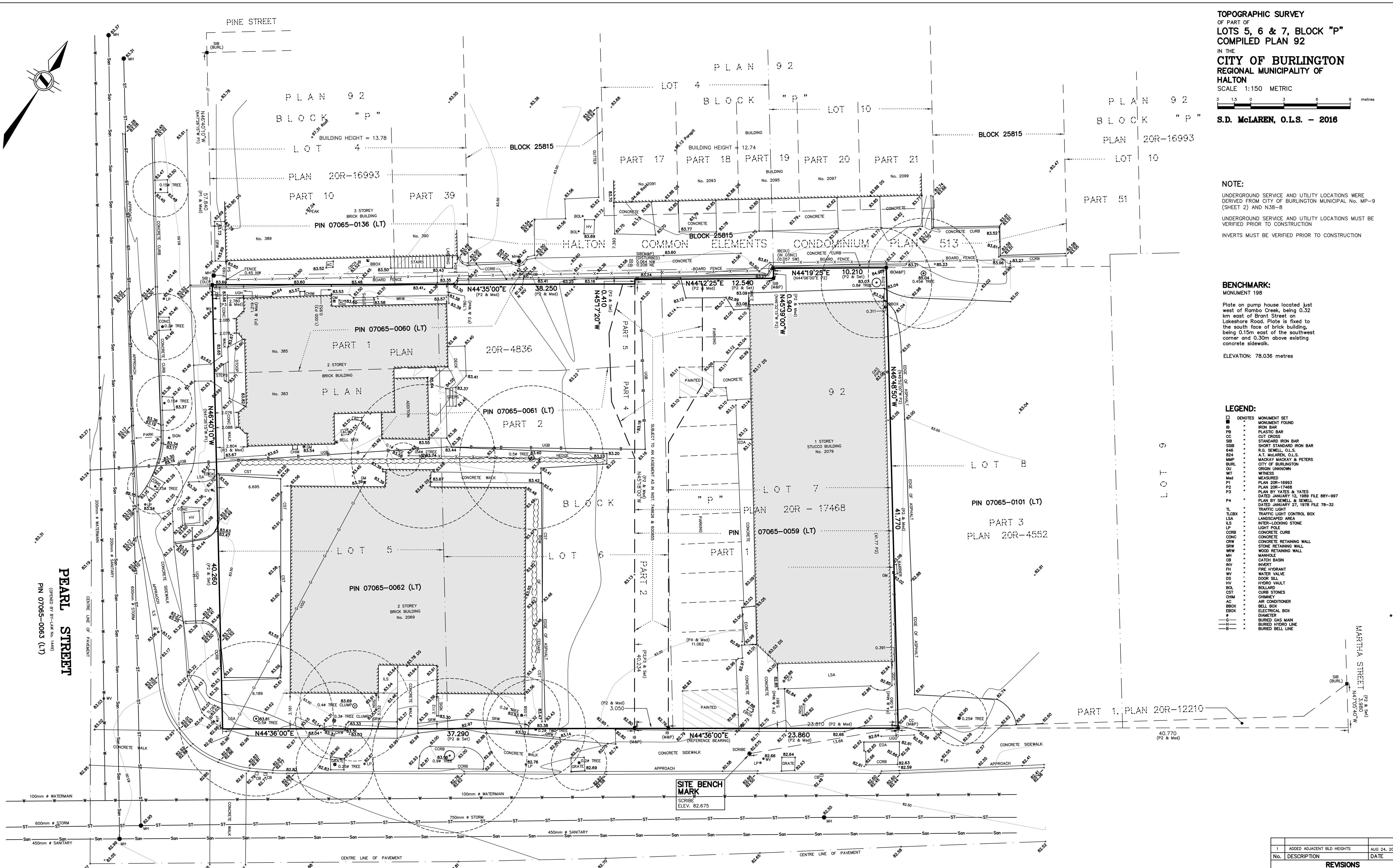


TOPOGRAPHIC SURVEY
OF PART OF
LOTS 5, 6 & 7, BLOCK "P"
COMPILED PLAN 92
IN THE
CITY OF BURLINGTON
REGIONAL MUNICIPALITY OF
HALTON
SCALE 1:150 METRIC
S.D. McLAREN, O.L.S. - 2016

NOTE:
UNDERGROUND SERVICE AND UTILITY LOCATIONS WERE DERIVED FROM CITY OF BURLINGTON MUNICIPAL No. MP-9 (SHEET 2) AND N38-8
UNDERGROUND SERVICE AND UTILITY LOCATIONS MUST BE VERIFIED PRIOR TO CONSTRUCTION
INVERTS MUST BE VERIFIED PRIOR TO CONSTRUCTION

BENCHMARK:
MONUMENT 198
Plate on pump house located just west of Rambo Creek, being 0.32 km east of Brant Street on Lakeshore Road. Plate is fixed to the south face of brick building, being 0.10m east of the southwest corner and 0.30m above existing concrete sidewalk.
ELEVATION: 78.036 metres

- LEGEND:**
- DENOTES MONUMENT SET
 - IB IRON BAR
 - PB PLASTIC BAR
 - CC CUT CROSS
 - SSB STANDARD IRON BAR
 - SSB SHORT STANDARD IRON BAR
 - 846 R.C. SEWELL, O.L.S.
 - 824 A.T. McLAREN, O.L.S.
 - MMP MACKAY MACKAY & PETERS
 - BURL CITY OF BURLINGTON
 - OU ORIGIN UNKNOWN
 - WT WITNESS
 - MeD MEASURED
 - P1 PLAN 20R-16993
 - P2 PLAN 20R-17468
 - P3 PLAN BY YATES & YATES DATED JANUARY 12, 1988 FILE 8BY-997
 - P4 PLAN BY SEWELL & SEWELL DATED JANUARY 27, 1978 FILE 78-32
 - TL TRAFFIC LIGHT
 - TLB TRAFFIC LIGHT CONTROL BOX
 - LSA LANDSCAPED AREA
 - ILS INTER-LOCKING STONE
 - LP LIGHT POLE
 - CRB CONCRETE CURB
 - CRW CONCRETE CURB
 - CRW CONCRETE RETAINING WALL
 - SRW STONE RETAINING WALL
 - WRW WOOD RETAINING WALL
 - MH MANHOLE
 - CB CATCH BASIN
 - INV INVERT
 - FH FIRE HYDRANT
 - WV WATER VALVE
 - DS DOOR SILL
 - HV HYDRO VAULT
 - BOL BOLLARD
 - CST CURB STONES
 - CHM CHIMNEY
 - AC AIR CONDITIONER
 - BBOX BELL BOX
 - EBOX ELECTRICAL BOX
 - D DIA METER
 - BURIED GAS MAIN
 - BURIED HYDRO LINE
 - BURIED BELL LINE



PEARL STREET
(FORMERLY BY-LAW No. 146)
PIN 07065-0063 (LT)

LAKESHORE ROAD
(FORMERLY PRINCESS STREET BY PLAN 92)
PIN 07065-0009 (LT)

SITE BENCH MARK
SCRIBE
ELEV. 82.675

METRIC NOTE
DISTANCES SHOWN ON THIS PLAN ARE IN METRES AND CAN BE CONVERTED TO FEET BY DIVIDING BY 0.3048

BEARING NOTE:
BEARINGS ARE ASTRONOMIC AND ARE REFERRED TO THE NORTHERLY LIMIT OF LAKESHORE ROAD AS SHOWN ON PLAN 20R-17468 AS BEING N44°36'00"E

SURVEYOR'S CERTIFICATE:
I CERTIFY THAT:
1. THIS SURVEY AND PLAN ARE CORRECT AND IN ACCORDANCE WITH THE SURVEY ACT, THE SURVEYORS ACT AND THE REGULATIONS MADE UNDER THEM
2. THE SURVEY WAS COMPLETED ON THE 17TH DAY OF NOVEMBER, 2016

| No. | DESCRIPTION | DATE | BY |
|-----|----------------------------|--------------|----|
| 1 | ADDED ADJACENT BLD HEIGHTS | AUG 24, 2017 | DO |

REVISIONS

S.D. McLAREN, O.L.S. - 2016. NO PERSON MAY COPY, REPRODUCE, DISTRIBUTE OR ALTER THIS PLAN IN WHOLE OR IN PART WITHOUT THE WRITTEN PERMISSION OF S.D. McLAREN, O.L.S.

A.T. McLaren Limited
LEGAL AND ENGINEERING SURVEYS
69 JOHN STREET SOUTH, SUITE 330
HAMILTON, ONTARIO, L8N 2B9
PHONE (905) 527-8559 FAX (905) 527-0032

Drawn: JB, Checked: RBM, Date: NOVEMBER 21, 2016, Scale: 1:150, Dwg No: 35165