



STRYBOS BARRON KING  
LANDSCAPE ARCHITECTURE

PARTNERS BRYN BARRON, OALA, CSLA, ISA  
ALISTAIR JOHNSTON, LOHTA, ISA, ASCA  
ASSOCIATES MATHIEU STRYBOS, OALA, CSLA  
SALVATORE VIOLA, OALA, CSLA  
MATTHEW REGIMBAL, LOHTA, ISA

January 4, 2018

Reserve Properties Ltd.  
110 Eglinton Ave. East, Suite 500  
Toronto, Ontario  
M4P 2Y1  
Att: Kelly Edwards

Re: **Arborist Letter for Proposed Development  
409 Brant Street  
Burlington, Ontario  
SBK Project No.: 5131**

Dear Ms. Edwards:

As requested, Certified Arborist Matthew Gehres of SBK visited the site to review any existing trees in accordance with City of Burlington Tree Protection Standards.

The existing tree inventory below refers to three City owned trees within the municipal right of way along Brant Street and one located along the John Street municipal right of way. Three immature, internal trees are also noted.

EXISTING TREE INVENTORY									
KEY	SPECIES	CALIPER		HEALTH	STRUCTURE	COMMENTS	PRESERVATION	MIN. TPZ	KEY
		IN (cm)	IN (m)						
1	HONEYLOCUST	39.0	10.0	GOOD	GOOD FORM	SOME INTERNAL DIEBACK AND SUCKER GROWTH	PRESERVE	2.4	1
2	HONEYLOCUST	27.0	10.0	GOOD	ONE SIDED FORM	SOME INTERNAL DIEBACK AND SUCKER GROWTH, EAST SIDE OF CROWN PRUNED DUE TO ADJACENT SIDEWALK AND BUILDING	REMOVE	1.8	2
3	HONEYLOCUST	29.0	9.0	FAIR	IRREGULAR FORM	ONE SIDED FORM, SIGNIFICANTLY PRUNED THROUGHOUT, EAST SIDE OF CROWN PRUNED, SUCKER GROWTH AND DIEBACK IN UPPER CROWN	REMOVE	1.8	3
4	CHANTICLEER PEAR	15.0	3.0	FAIR	GOOD FORM	PRUNED SLIGHTLY ON WEST SIDE DUE TO ADJACENT SIDEWALK, SUCKER GROWTH FROM PRUNING CUTS	REMOVE	1.8	4
5	TREE OF HEAVEN	10-13	4.0	GOOD	DOUBLE STEM	ONE SIDED FORM, CROWDED BY ADJACENT BUILDING, GROWING OUT OF ASPHALT DRIVE	REMOVE	1.8	5
6	TREE OF HEAVEN	9.0	4.0	GOOD	ONE SIDED FORM	CROWDED BY ADJACENT BUILDING, GROWING OUT OF ASPHALT DRIVE	REMOVE	1.2	6
7	TREE OF HEAVEN	11.0	3.0	GOOD	ONE SIDED FORM	CROWDED BY ADJACENT BUILDING, GROWING OUT OF ASPHALT DRIVE	REMOVE	1.8	7

Based on the proposed Site Plan, shoring requirements and future streetscape standards, the internal trees as well as the boulevard trees, with the exception of tree#1 are recommended for removal.

The replanting of boulevard trees will comply with the future municipal streetscape standards.

Sincerely,  
**STRYBOS BARRON KING LTD.**

**Matthew Gehres**  
ISA Certified Arborist ON-1114A  
Senior Landscape Technologist  
Extension 228



Tree# 1



Tree# 2



Tree# 3



Tree# 4



**EXISTING TREE INVENTORY**

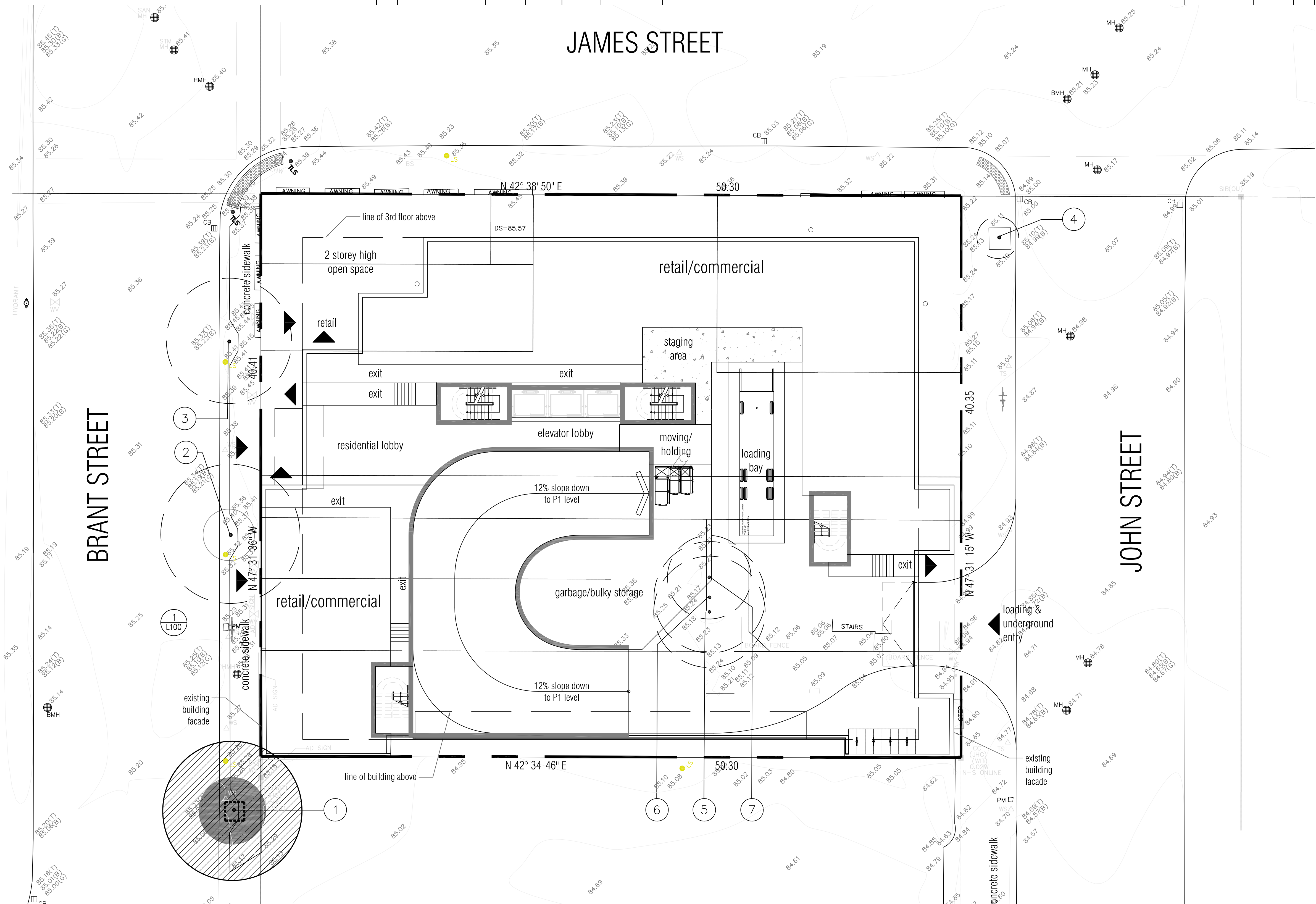
KEY	SPECIES	CALIPER IN (cm)	CROWN IN (m)	HEALTH G/F/P	STRUCTURE	COMMENTS	PRESERVATION DIRECTION	MIN. TPZ	KEY
1	HONEYLOCUST	39.0	10.0	GOOD	GOOD FORM	SOME INTERNAL DIEBACK AND SUCKER GROWTH	PRESERVE	2.4	1
2	HONEYLOCUST	27.0	10.0	GOOD	ONE SIDED FORM	SOME INTERNAL DIEBACK AND SUCKER GROWTH, EAST SIDE OF CROWN PRUNED DUE TO ADJACENT SIDEWALK AND BUILDING	REMOVE	1.8	2
3	HONEYLOCUST	29.0	9.0	FAIR	IRREGULAR FORM	ONE SIDED FORM, SIGNIFICANTLY PRUNED THROUGHOUT, EAST SIDE OF CROWN PRUNED, SUCKER GROWTH AND DIEBACK IN UPPER CROWN	REMOVE	1.8	3
4	CHANTICLEER PEAR	15.0	3.0	FAIR	GOOD FORM	PRUNED SLIGHTLY ON WEST SIDE DUE TO ADJACENT SIDEWALK, SUCKER GROWTH FROM PRUNING CUTS	REMOVE	1.8	4
5	TREE OF HEAVEN	10-13	4.0	GOOD	DOUBLE STEM	ONE SIDED FORM, CROWDED BY ADJACENT BUILDING, GROWING OUT OF ASPHALT DRIVE	REMOVE	1.8	5
6	TREE OF HEAVEN	9.0	4.0	GOOD	ONE SIDED FORM	CROWDED BY ADJACENT BUILDING, GROWING OUT OF ASPHALT DRIVE	REMOVE	1.2	6
7	TREE OF HEAVEN	11.0	3.0	GOOD	ONE SIDED FORM	CROWDED BY ADJACENT BUILDING, GROWING OUT OF ASPHALT DRIVE	REMOVE	1.8	7

**GENERAL NOTES**

- VERIFY ALL DIMENSIONS.
- DO NOT SCALE DRAWINGS.
- REPORT ANY DISCREPANCIES, DISCOVERED ERRORS, OR OMISSIONS TO THE LANDSCAPE ARCHITECT BEFORE PROCEEDING.
- IT IS ADVISED THAT CONTRACTORS CONTACT THE LANDSCAPE ARCHITECT PRIOR TO CONSTRUCTION TO ENSURE THE USE OF THE LATEST REVISED DRAWINGS.
- DRAWINGS AND SPECIFICATIONS ARE THE PROPERTY OF THE LANDSCAPE ARCHITECT.

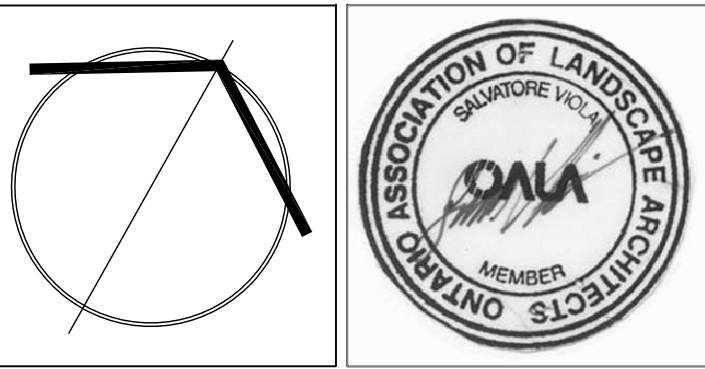
**LEGEND**

- TREE PROTECTION HOARDING
- EXISTING TREES TO BE PRESERVED
- MINIMUM TREE PROTECTION ZONE (TPZ)
- VEGETATION NUMBER KEY
- EXISTING TREES TO BE REMOVED



No.	DATE	REVISION	BY
2	JAN. 04, 2018	STREETSCAPE TREE PLANTING	SV
1	DEC. 18, 2017	ISSUED FOR ZONING SUBMISSION	SV

It is the responsibility of the Contractor and/or Owner to ensure that the drawings with the latest revisions are used for construction.



**SBK** 5770 HURONTARIO STREET, SUITE 320  
 MISSISSAUGA, ONTARIO, L5R 3G5  
 T: 416.695.4949 F: 905.712.3101  
 WWW.STRYBOS.COM

**STRYBOS BARRON KING**  
 LANDSCAPE ARCHITECTURE

PROJECT:

**BRANT + JAMES**  
 BURLINGTON, ONTARIO

DRAWING TITLE:

**TREE INVENTORY +  
 PRESERVATION PLAN**

SCALE: SCALE 1:150	PROJECT No. <b>17-5131</b>
DATE: DECEMBER 2017	DRAWN BY: S.G.
DRAWN BY: S.G.	CHECKED BY: S.V.
CHECKED BY: S.V.	DRAWING No. <b>V100</b>