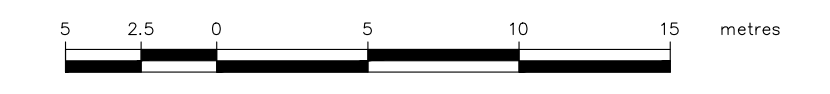
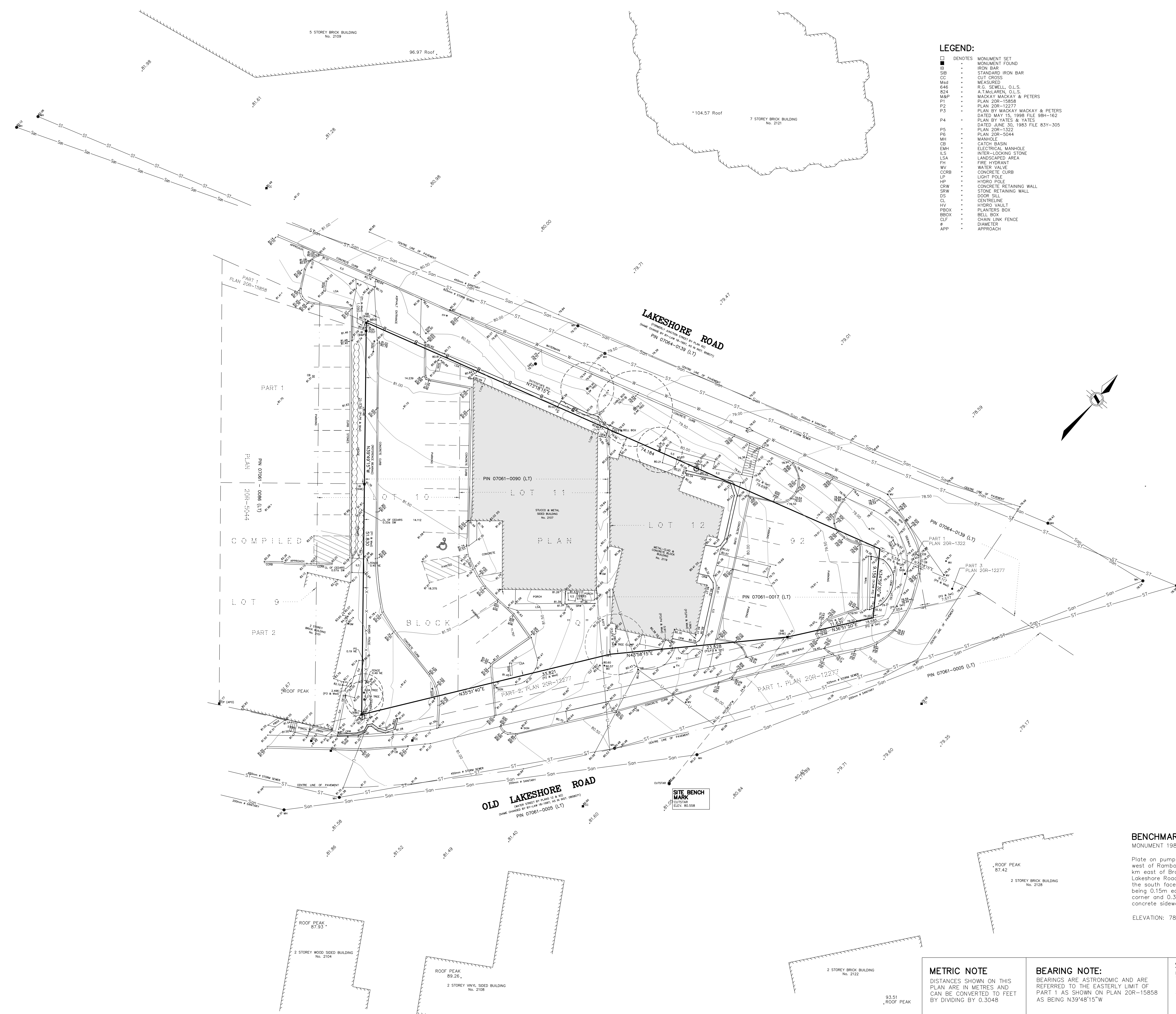


TOPOGRAPHIC SURVEY
 OF PART OF
PART OF LOTS 10 & 12, BLOCK "Q"
 AND ALL OF
LOT 11, BLOCK "Q"
COMPILED PLAN 92
 IN THE
CITY OF BURLINGTON
 REGIONAL MUNICIPALITY OF HALTON

SCALE: 1:250 METRIC

 S.D. McLaren, O.L.S. - 2016

- LEGEND:**
- DENOTES MONUMENT SET
 - MONUMENT FOUND
 - IB IRON BAR
 - SB STANDARD IRON BAR
 - CC CUT CROSS
 - Md1 MESSAGED
 - 646 H.G. SEWELL, O.L.S.
 - 824 A. McLAREN, O.L.S.
 - M&P MACKAY MACKAY & PETERS
 - P1 PLAN 20R-15858
 - P2 PLAN 20R-12277
 - P3 PLAN BY MACKAY MACKAY & PETERS DATED MAY 15, 1988 FILE 88H-162
 - P4 PLAN BY YATES & YATES DATED JUNE 30, 1983 FILE 83Y-305
 - P5 PLAN 20R-1322
 - PE PLAN 20R-5044
 - RE MANHOLE
 - CB CATCH BASIN
 - EMH ELECTRICAL MANHOLE
 - LS INTER-LOCKING STONE
 - LSA LANDSCAPED AREA
 - FI FIRE HYDRANT
 - WV WATER VALVE
 - COB CONCRETE CURB
 - LP LIGHT POLE
 - HP HYDRO POLE
 - CRW CONCRETE RETAINING WALL
 - SRW STONE RETAINING WALL
 - DS DOOR SILL
 - CL CENTRELINE
 - HV HYDRO VAULT
 - PBOX PLANTERS BOX
 - RBOX REIL BOX
 - CLF CHAIN LINK FENCE
 - # DIAMETER
 - APP APPROACH



BENCHMARK:
 MONUMENT 19B
 Plate on pump house located just west of Rambo Creek, being 0.32 km east of Brant Street on Lakeshore Road. Plate is fixed to the south face of brick building, being 0.15m east of the southwest corner and 0.30m above existing concrete sidewalk.
 ELEVATION: 78.036 metres

NOTE:
 UNDERGROUND SERVICE AND UTILITY LOCATIONS WERE DERIVED FROM CITY OF BURLINGTON DRAWING No. N38-3 AND N38-8
 UNDERGROUND SERVICE AND UTILITY LOCATIONS MUST BE VERIFIED PRIOR TO CONSTRUCTION
 INVERTS MUST BE VERIFIED PRIOR TO CONSTRUCTION

METRIC NOTE
 DISTANCES SHOWN ON THIS PLAN ARE IN METRES AND CAN BE CONVERTED TO FEET BY DIVIDING BY 0.3048

BEARING NOTE:
 BEARINGS ARE ASTRONOMIC AND ARE REFERRED TO THE EASTERLY LIMIT OF PART 1 AS SHOWN ON PLAN 20R-15858 AS BEING N39°48'15"W

SURVEYOR'S CERTIFICATE:
 I CERTIFY THAT:
 1. THIS SURVEY AND PLAN ARE CORRECT AND IN ACCORDANCE WITH THE SURVEYS ACT, THE SURVEYORS ACT AND THE REGULATIONS MADE UNDER THEM
 2. THE SURVEY WAS COMPLETED ON THE 17th DAY OF NOVEMBER, 2016
 OCTOBER 24, 2019
 DATE
 S. DAN McLAREN, O.L.S.

© S.D. McLaren, O.L.S. - 2016. NO PERSON MAY COPY, REPRODUCE, DISTRIBUTE OR ALTER THIS PLAN IN WHOLE OR IN PART WITHOUT THE WRITTEN PERMISSION OF S.D. McLaren, O.L.S.

A.T. McLaren Limited
 LEGAL AND ENGINEERING SURVEYORS
 69 JOHN STREET SOUTH, SUITE 230
 HAMILTON, ONTARIO, L8N 2B9
 PHONE: (905) 527-8559 FAX: (905) 527-0032

Drawn	Checked	Drawn	Scale	Dwg. No.
LC	DG	DW	1:250	35182