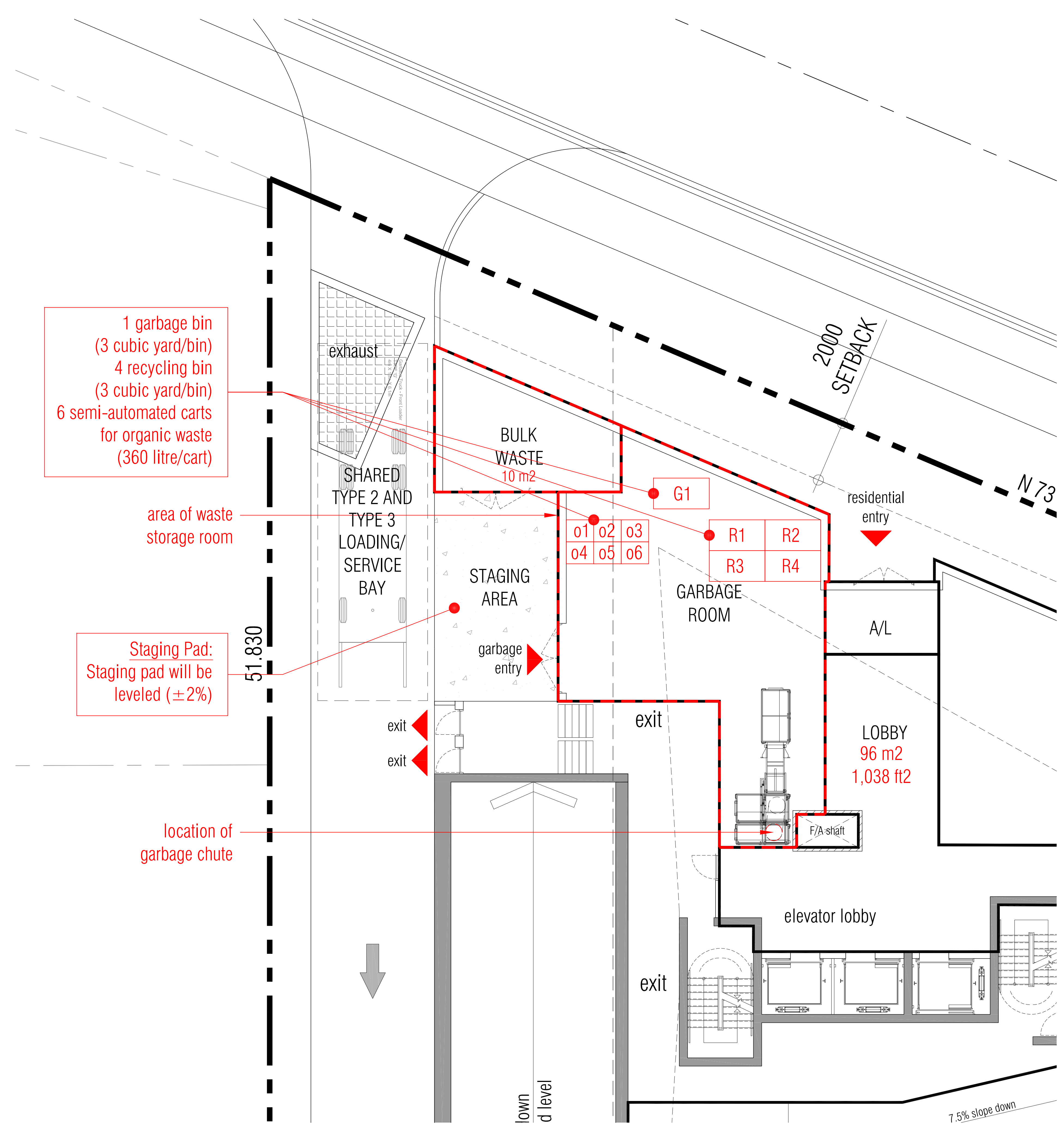


This drawing, as an instrument of service, is provided by and is the property of Graziani + Corazza Architects Inc. The contractor must verify and accept responsibility for all dimensions and conditions on site and must notify Graziani + Corazza Architects Inc. of any variations from the supplied information. Graziani + Corazza Architects Inc. is not responsible for the accuracy of survey, structural, mechanical, electrical, etc., engineering information shown on this drawing. Refer to the appropriate engineering drawings before proceeding with the work. Construction must conform to all applicable codes and requirements of the authorities having jurisdiction. Unless otherwise noted, no investigation has been undertaken or reported on by this office in regards to the environmental condition of this site. This drawing is not to be scaled. All architectural symbols indicated on this drawing are graphic representations only.

Conditions for electronic information transfer
 Electronic information is supplied to the other associated firms to assist them in the execution of their work/review. The recipient firms must determine the completeness/appropriateness/relevance of the information in respect to their particular responsibility.
 Graziani + Corazza Architects Inc. shall not be responsible for:
 1. Errors, omissions, incompleteness due to loss of information in whole or part when information is transferred.
 2. Transmission of any virus or damage to the receiving electronic system when information is transferred.

01. NOV.20.2019 ISSUED FOR REZONING APPLICATION

| SOLID WASTE MANAGEMENT CALCULATIONS | | |
|-------------------------------------|---|------------------------|
| | As per Development Design Guidelines | Proposed |
| GARBAGE WASTE | 1.8.1.1 REQUIRED | |
| | 81 - 200 Units = 1 (3 Cubic Yard) Bin | 1 (3 Cubic Yard) Bin |
| RECYCLING | 18.1.2 REQUIRED | |
| | 1 Semi-Automatic Cart/7 Units = 150 Units/7 Units = 22 semi-automatic carts | |
| | 1 Semi-Automatic Cart = 360 litres 22 Carts x 360 litres = 7,920 litres = 10.36 Cubic Yards | |
| | 10.36 Cubic Yards = 4 (3 Cubic Yard) Bins | 4 (3 Cubic Yard) Bin |
| ORGANIC WASTE | 18.1.3 REQUIRED | |
| | 1 Semi-Automatic Cart/25 Units = 150 Units/25 Units = 6 Semi-Automatic Carts | 6 Semi-Automatic Carts |
| Total | | 11 Bins |
| BULK STORAGE | 1.9.2.4 REQUIRED | |
| | 10 m ² | 10 m ² |
| LOADING SPACE | REQUIRED | |
| | 1 *Type 2* Vehicle Required | 1 *Type 2* Vehicle |
| | 1 *Type 3* Vehicle Required | 1 *Type 3* Vehicle |
| NOTES | The collection point must be level (change of grade must not be more than +/- 2%) and if applicable, must be certified that it is designed and constructed to support a minimum of 35 tonnes (the weight of a fully loaded waste truck) | |



issued for revisions

GRAZIANI + CORAZZA ARCHITECTS INC.
 1320 Shawson Drive, Suite 100, Mississauga, Ontario, L4W 1C3
 Phone: 905.795.2601 Fax: 905.795.2844 www.gc-architects.com

PROPOSED MIXED USE DEVELOPMENT
2107-2119 OLD LAKESHORE ROAD

BURLINGTON CARRIAGEGATE ONTARIO
 Home to new living

Project Architect: **E. CORAZZA**
 Assistant Designer: **M. FAUSTINO**
 Drawn By: **M. FAUSTINO/W. CHIU**
 Checked By: **D. BIASE**
 Plot Date: **Nov. 20, 2019**
 Job #: **1537.17**

WASTE MANAGEMENT PLAN

1:75 **A103**

TITLEBLOCK SIZE: 610 x 950