

**KEY PLAN**  
Scale : N.T.S.

**SUBJECT LANDS**

**NOTE :**  
THE POSITION OF POLE LINES, CONDUITS, WATERMANS, SEWERS AND UNDERGROUND AND ABOVE GROUND UTILITIES IS NOT NECESSARILY SHOWN ON THE CONTRACT DRAWINGS, AND WHERE SHOWN, THE ACCURACY OF THE POSITION OF SUCH UTILITIES AND STRUCTURES IS NOT GUARANTEED. BEFORE STARTING THE WORK THE CONTRACTOR SHALL INFORM HIMSELF OF THE EXACT LOCATION OF ALL UTILITIES AND STRUCTURES, AND SHALL ASSUME ALL LIABILITY FOR DAMAGE TO THEM.  
THE CONTRACTOR MUST CHECK AND VERIFY ALL DIMENSIONS ON THE JOB AND REPORT ANY DISCREPANCY TO THE ARCHITECTS/ENGINEERS BEFORE PROCEEDING WITH THE WORKS.  
ALL DRAWINGS AND SPECIFICATIONS ARE INSTRUMENTS OF SERVICE AND THE PROPERTY OF THE ENGINEER WHICH MUST BE RETURNED AT THE COMPLETION OF WORK.  
THIS DRAWING IS NOT TO BE SCALED.  
THE APPROVAL OF THIS PLAN DOES NOT EXEMPT THE OWNER'S CONTRACTOR FROM OBTAINING, BUT NOT LIMITED TO THE FOLLOWING PERMITS: ROAD CUT, SEWER PERMITS, RELOCATION OF SERVICES, ENCROACHMENT AGREEMENTS, APPROACH APPROVAL PERMITS, ETC.  
EXISTING TOPOGRAPHICAL INFORMATION SUPPLIED BY MACKAY, MACKAY & PETERS LIMITED ONTARIO LAND SURVEYORS.  
BOUNDARY DATA DERIVED FROM INFORMATION FROM MACKAY, MACKAY & PETERS LIMITED, ONTARIO LAND SURVEYORS.

**BENCH MARK:**  
CITY OF BURLINGTON B.M. #466 ELEVATION 80.314m

**LOCATION:**  
BRASS PLAQUE LOCATED AT SOUTHWEST CORNER OF THE BRIDGE OVER SHORES CREEK 130m EAST OF SHORES CREEK ROAD, ON SOUTH SIDE OF LAKESHORE ROAD.

**BEARING NOTE**  
BEARINGS ARE ASTRONOMIC AND ARE REFERRED TO THE WESTERLY LIMIT OF KING'S HIGHWAY N6 AS SHOWN ON PLAN 62R-16483, HAVING A BEARING OF N18°09'25"E.

**METRIC NOTE:**  
DISTANCES AND ELEVATIONS ON THIS PLAN ARE TYPICALLY SHOWN IN METRES AND CAN BE CONVERTED TO FEET BY DIVIDING BY 0.3048.

NO.	REVISIONS	DATE	BY
8	ISSUED FOR REZONING	AUG 21/19	AM
7	ISSUED FOR COORDINATION	AUG 20/19	AM
6	ISSUED FOR CITY REVIEW	MAR 28/19	AM
5	ISSUED FOR CLIENT REVIEW	MAR 26/19	AM
4	ISSUED FOR COORDINATION	JAN 14/19	AM
3	ISSUED FOR REVIEW AND APPROVAL	ARP 6/18	MHH
2	ISSUED FOR REVIEW AND APPROVAL	MAY 11/17	MHH
1	REVISED AS PER SP CHANGES	MAR 13/17	MHH

SCALE:

FIGURE : **HEIGHT SURVEY OF ADJACENT BUILDINGS**

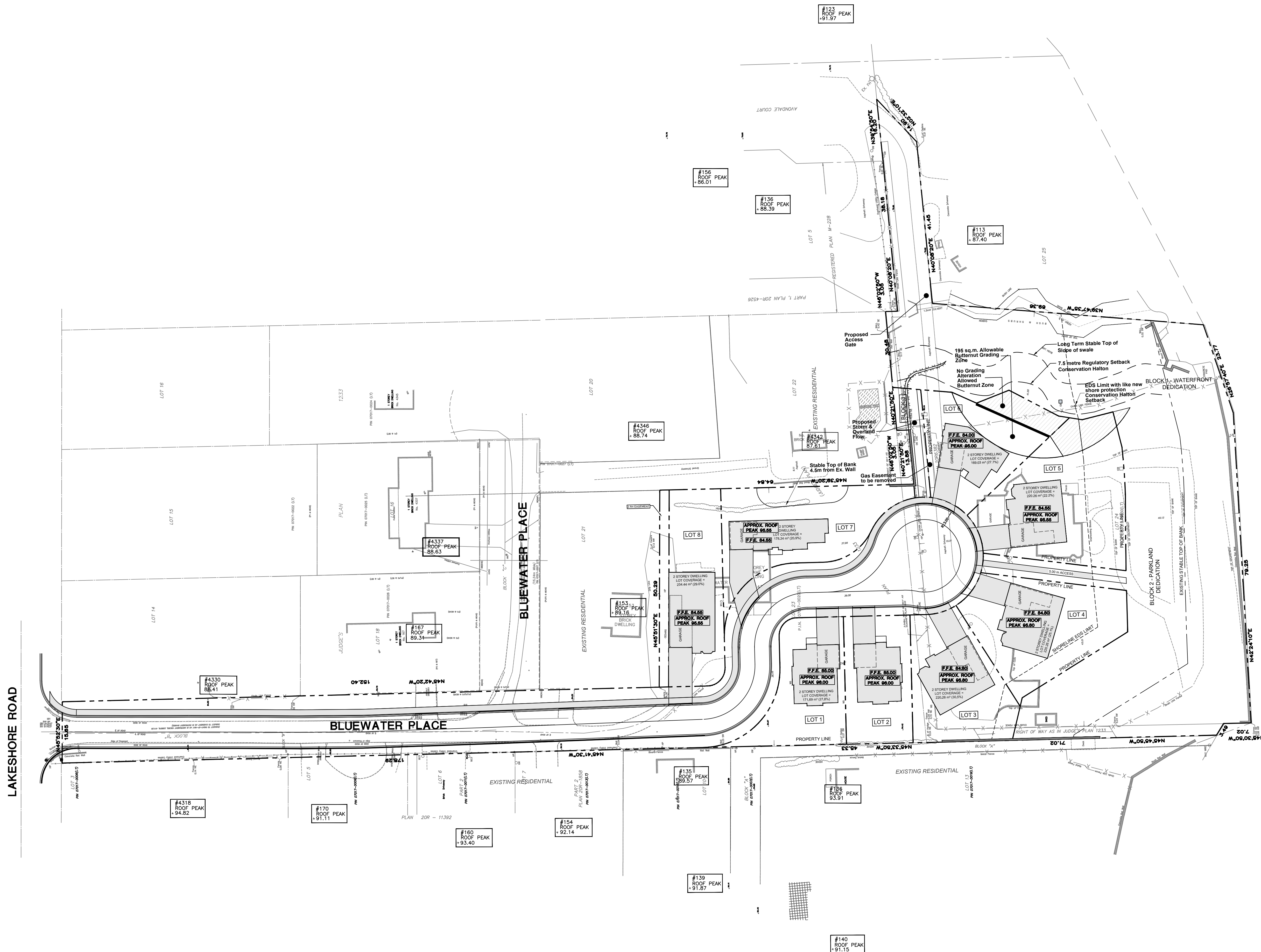
CLIENT : **BLOOMFIELD HOMES**

PROJECT : **PROPOSED RESIDENTIAL DEVELOPMENT  
143 BLUEWATER PLACE & 105 AVONDALE COURT  
BURLINGTON, ONTARIO**



The OdanDeteach Group Inc. P: (905) 632-3811 F: (905) 632-3363  
5230 SOUTH SERVICE ROAD, BURLINGTON, ONTARIO, L7L 5K2

SCALE : 1: 500	PROJ. NO.: 13215	DATE: MAY 2016	DESIGN BY: J.K.
13215 FIGURE 6.DWG			DRAWN BY: M.H.H.
			CHECKED BY: D.C.S.
			APPROVED BY: J.K.
			DRWG. NO.: FIG. 6
FILE NUMBER	ENGINEER		



LAKESHORE ROAD

BLUEWATER PLACE

BLUEWATER PLACE

FILE NUMBER ENGINEER