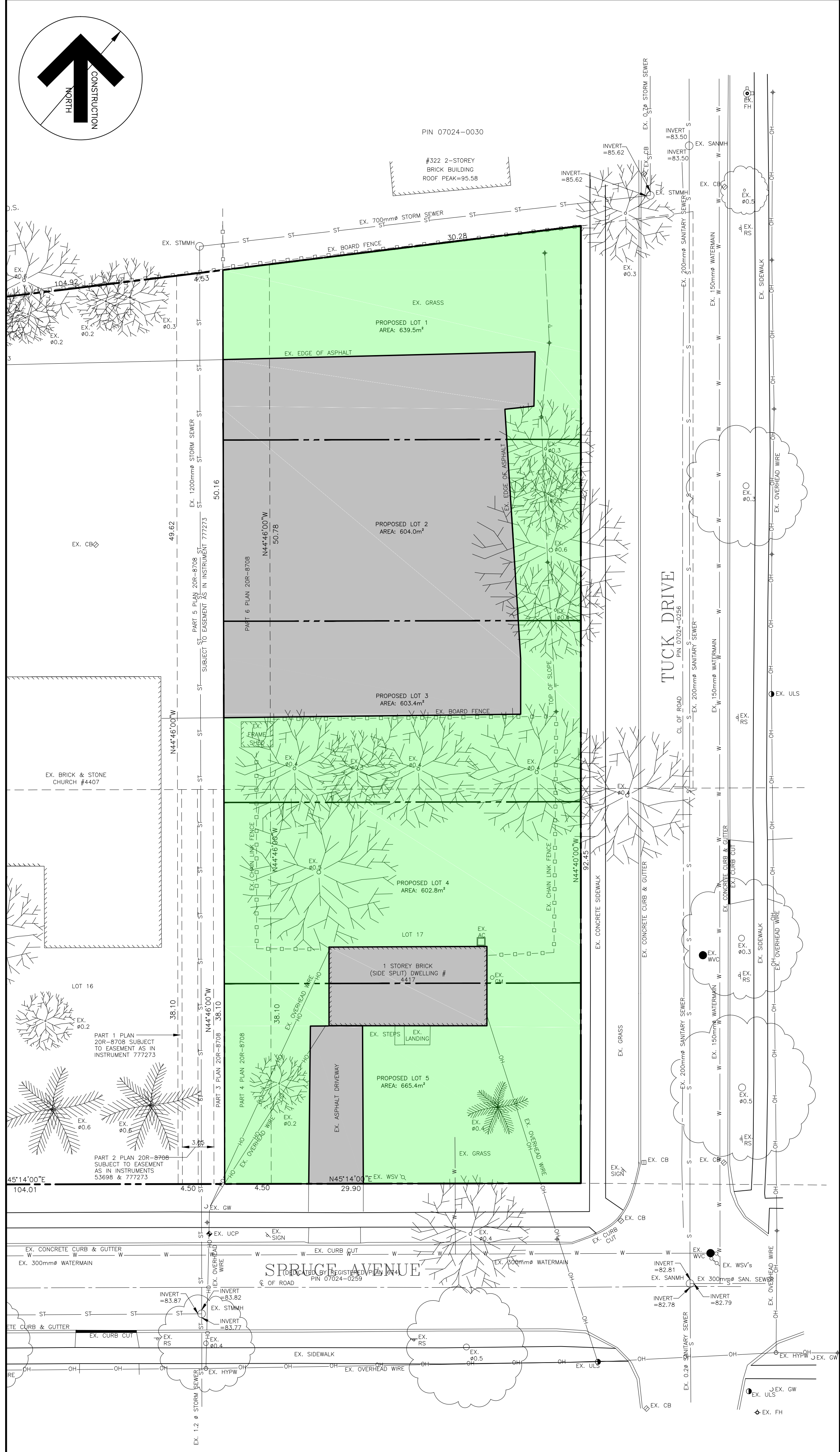


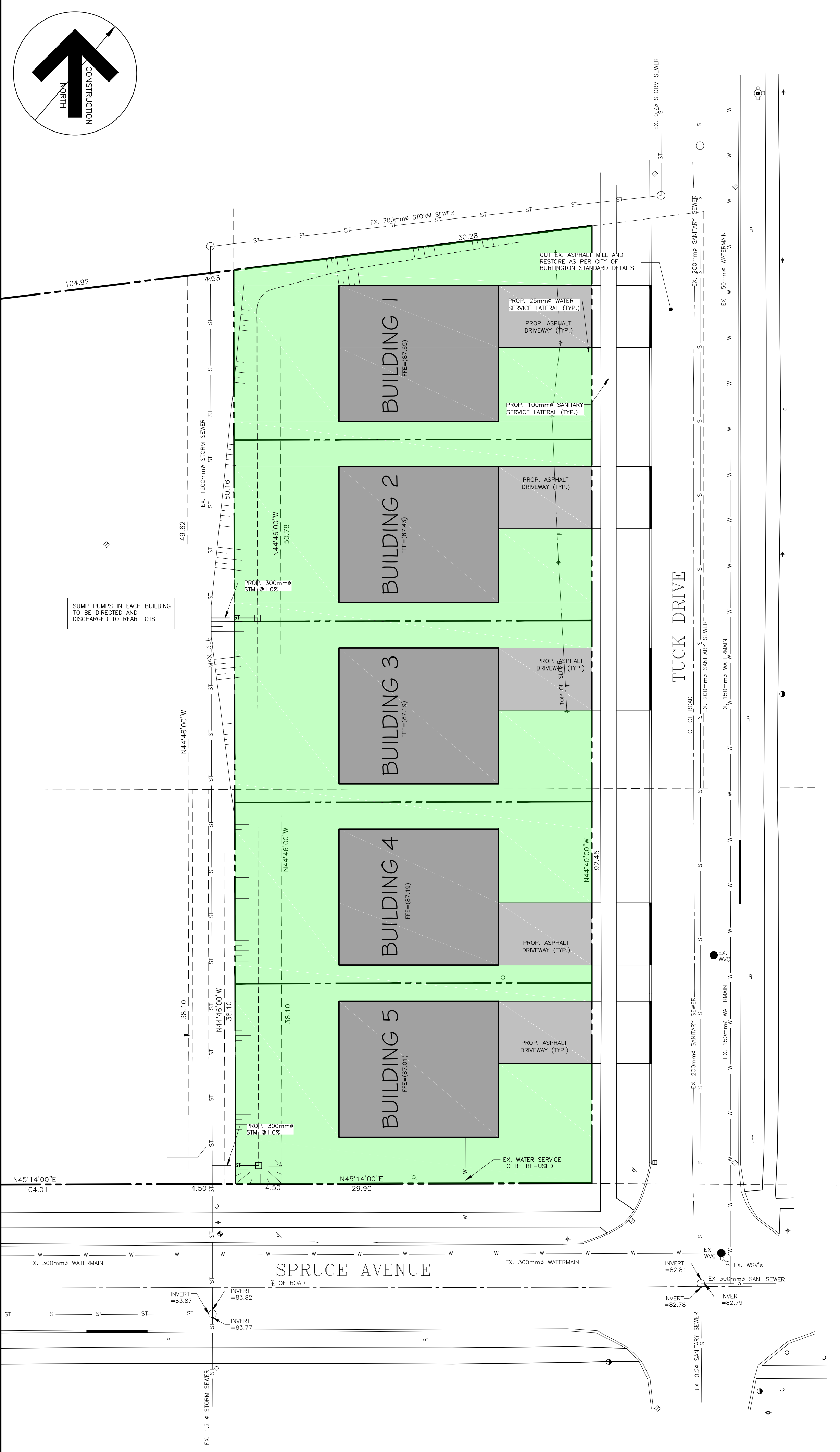
EXISTING IMPERVIOUSNESS:
 PERVIOUS AREA (LANDSCAPE/SOD) = 1,933.6m²
 IMPERVIOUS AREA (ASPALT/BUILDING) = 1,181.7m²
 TOTAL AREA OF DEVELOPMENT = 3,115.3m²
IMPERVIOUS % = 38.0%

PROPOSED IMPERVIOUSNESS:
 PERVIOUS AREA (LANDSCAPE/SOD) = 1,835.0m²
 IMPERVIOUS AREA (ASPALT/BUILDING) = 1,280.3m²
 TOTAL AREA OF DEVELOPMENT = 3,115.3m²
IMPERVIOUS % = 41.0%

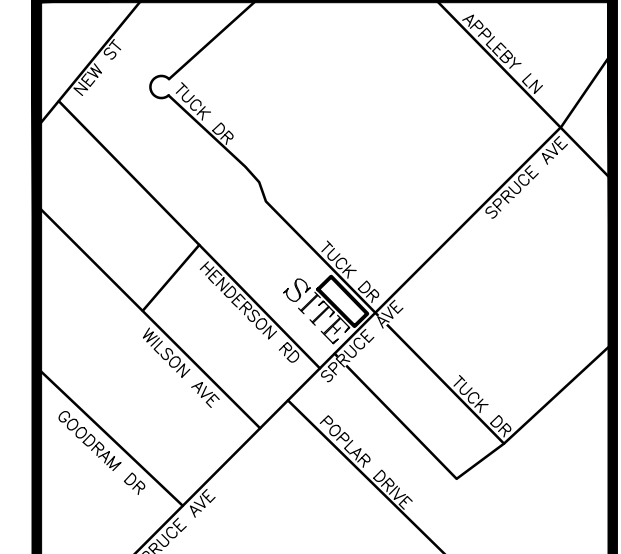
SWM ANALYSIS:
 THE PROPOSED INCREASE IN IMPERVIOUSNESS OF UP TO 3.0% WILL NOT NEGATIVELY IMPACT THE STORM DRAINAGE OF THE SITE.



1 EXISTING IMPERVIOUSNESS 1:250



2 PROPOSED IMPERVIOUSNESS 1:250



Contractor must verify all dimensions on the Project Site and report any discrepancies before proceeding with the Work.
 This drawing is a part of the Contract Documents and is to be read in conjunction with all other Contract Documents.
 © COPYRIGHT - LANHACK CONSULTANTS INC. All rights reserved.
 SOURCE: EXISTING BOUNDARY SURVEY AND TOPOGRAPHICAL INFORMATION OBTAINED FROM MACKAY MACKAY & PETERS LTD., D.W.G. No. 35116.
 THE POSITION OF THE POLE LINES, CONDUITS, WATERMANS, SEWERS, AND OTHER UTILITIES AND STRUCTURES ARE NOT NECESSARILY SHOWN ON THE CONTRACT DRAWINGS, AND WHERE SHOWN THE ACCURACY OF THE POSITION OF SUCH UTILITIES AND STRUCTURES IS NOT GUARANTEED.

Revision Record

No.	Description	Date (m/d/y)
A	ISSUED FOR ZBA	03/23/18

Issue Record

No.	Description	Date (m/d/y)

NOT FOR CONSTRUCTION

LANHACK CONSULTANTS INC.
 Consulting Engineers
 1425 Cormorant Road
 Suite 302
 Ancaster, ON L9G 4K5
 Tel: (905) 777-1454
 Fax: (905) 336-8142

Spruce Avenue Development

4417 Spruce Avenue
 Burlington, Ontario

Date: March 2018
 Drawn By: TV
 Chkd By: SMP
 Scale: AS NOTED

Imperviousness Plan

Project No.: 18088 Drawing No.: C3-1 Rev.: A

Plot Date: 03/23/18
 18088_C1-1 Grading and Servicing Plan.dwg
 18088_C1-1 Grading and Servicing Plan.dwg