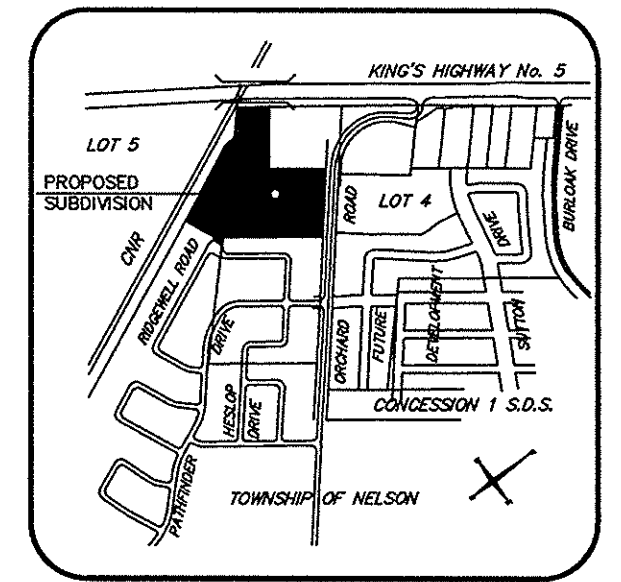


DUNDAS STREET

KING'S HIGHWAY No.5



KEY MAP  
N.T.S.

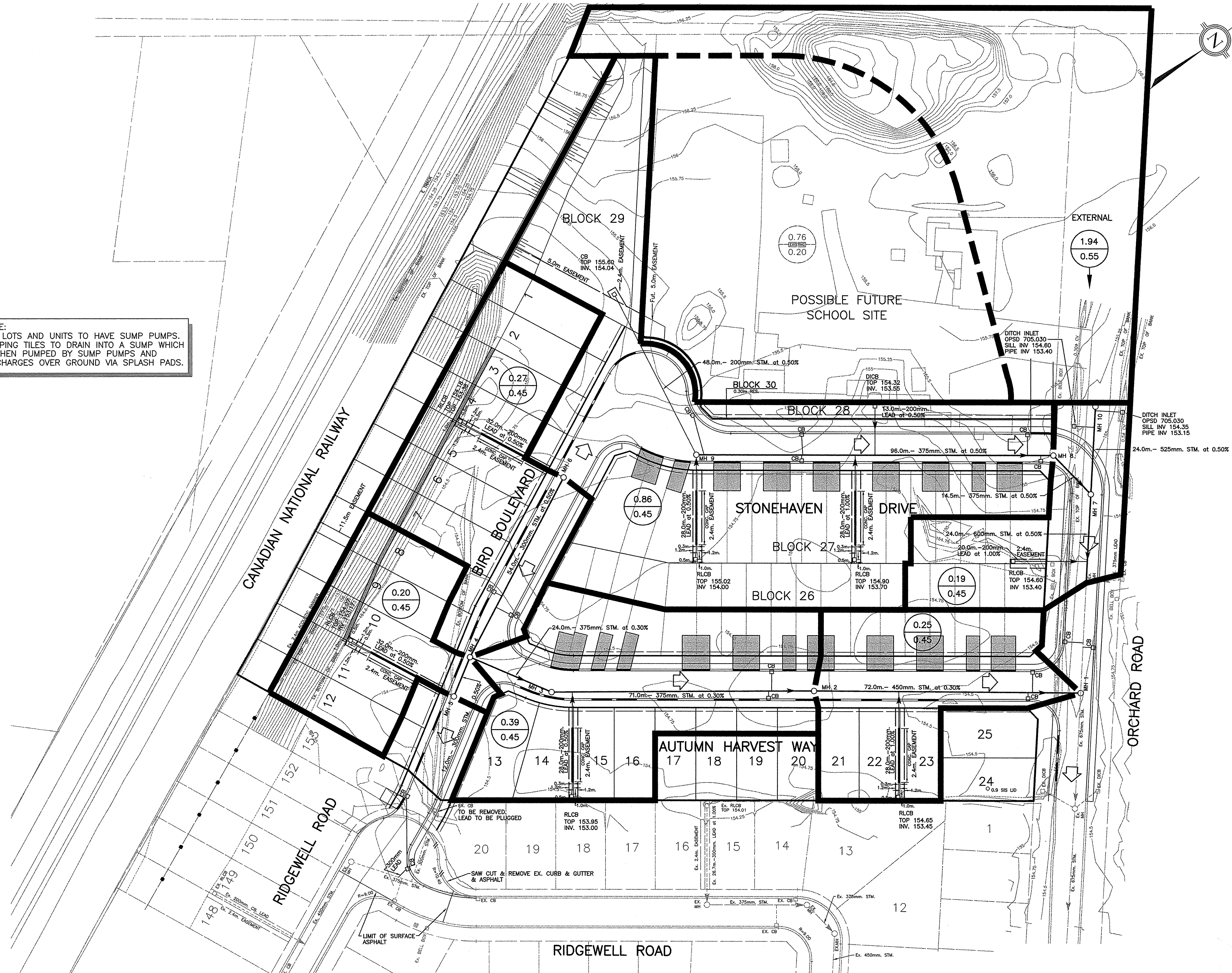
LEGEND

- 0.53 AREA IN HECTARES
- 0.40 RUN-OFF CO-EFFICIENT
- STORM AREA DRAINAGE BOUNDARY
- OVERLAND FLOW ROUTE

NOTES:

1. FOR GENERAL NOTES SEE DWG. No. 7

NOTE:  
ALL LOTS AND UNITS TO HAVE SUMP PUMPS.  
WEEPING TILES TO DRAIN INTO A SUMP WHICH  
IS THEN PUMPED BY SUMP PUMPS AND  
DISCHARGES OVER GROUND VIA SPLASH PADS.



NO.	DATE	BY	REVISIONS
2	21/10/02	B.E.K.	REVISED AS PER CITY/REGION COMMENTS
1	22/08/02	B.E.K.	REVISED AS PER CITY/REGION COMMENTS

DESIGN	SL	CHK'D	SL	DATE
DRAWN	B.E.K.	CHK'D	SL	JULY 2002

SCALE  
HORIZ. 15 10 5 0 5 15  
1:500

APPROVALS

CITY of BURLINGTON	STAMP
DIRECTOR OF ENGINEERING	
DATE	
REGION of HALTON	
DESIGN OF SANITARY & WATER SERVICES APPROVED SUBJECT TO DETAIL CONSTRUCTION CONFORMING TO HALTON REGION STANDARDS & SPECIFICATIONS & LOCATION APPROVAL FROM AREA MUNICIPALITY.	
SIGNED	DATE
PLANNING AND PUBLIC WORKS DEPARTMENT - HALTON REGION	

**S. LLEWELLYN & ASSOCIATES LIMITED**  
CONSULTING ENGINEERS

Tel. (905) 631-6978  
Fax (905) 631-8927  
email: scott@halo.on.ca

3228 South Service Road, Suite #210 West Wing, Burlington, Ont, L7N 3H8

CITY OF BURLINGTON  
REGIONAL MUNICIPALITY OF HALTON

LOSANI HOMES (1998) LTD.  
HARVEST LANDING  
IN THE ORCHARD

STORM DRAINAGE  
AREA PLAN