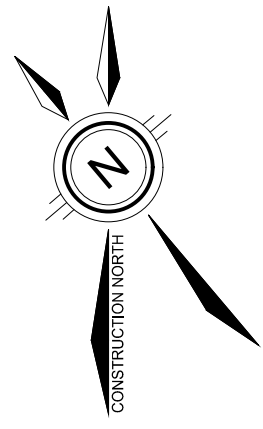
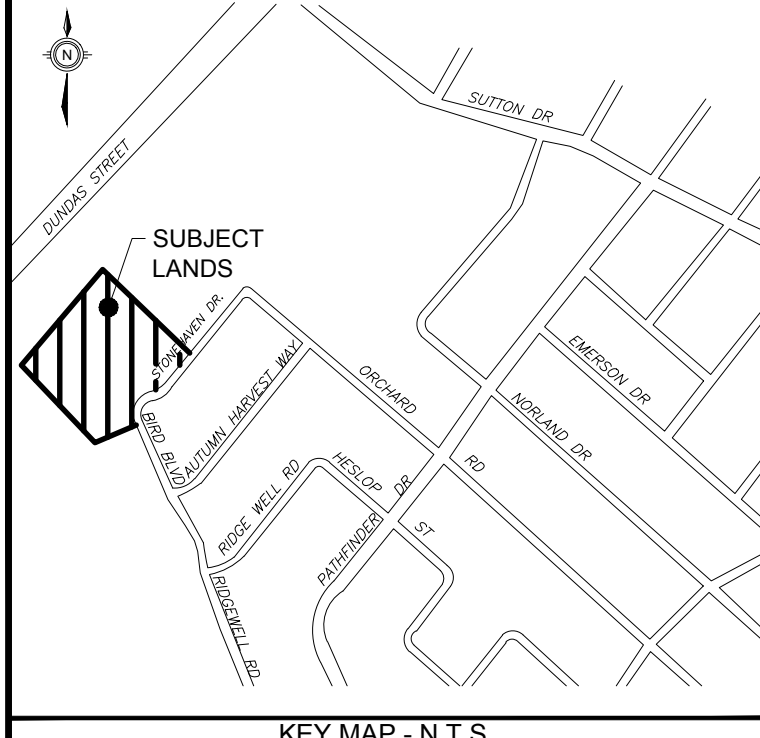
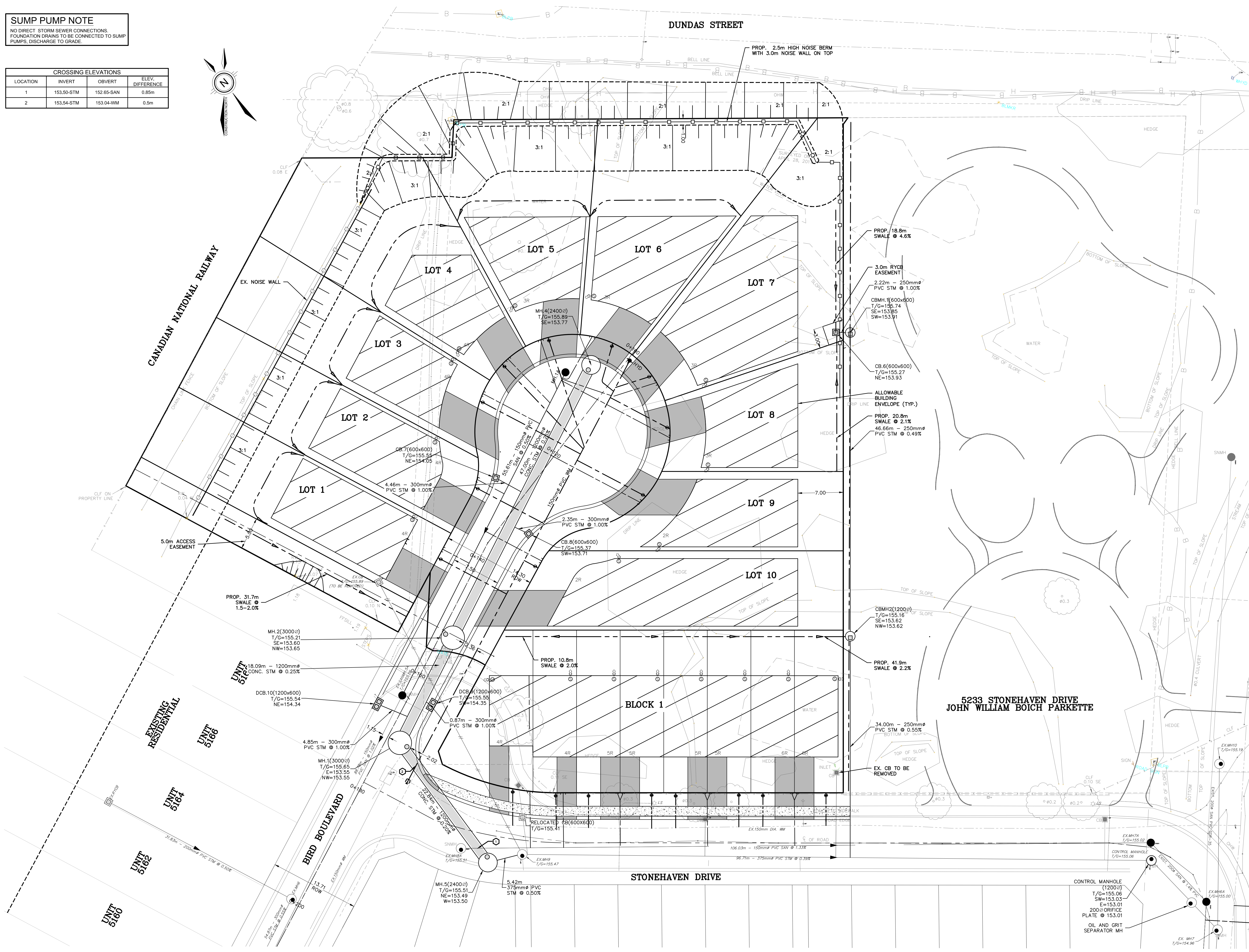


SUMP PUMP NOTE
 NO DIRECT STORM SEWER CONNECTIONS.
 FOUNDATION DRAINS TO BE CONNECTED TO SUMP
 PUMPS, DISCHARGE TO GRADE.

CROSSING ELEVATIONS			
LOCATION	INVERT	OBVERT	ELEV. DIFFERENCE
1	153.50-STM	152.65-SAN	0.85m
2	153.04-STM	153.04-WM	0.5m



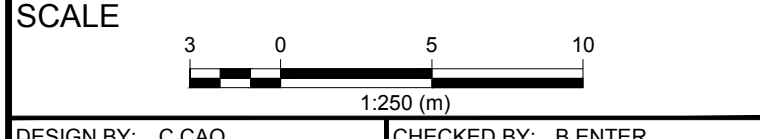
DUNDAS STREET



- LEGEND**
- PROPOSED SILT FENCE OPSD 219.130
 - CB — PROPOSED CATCH BASIN
 - EXISTING STORM FLOW DIRECTION
 - PROPOSED SANITARY SERVICE LATERAL
 - S-MH — EXISTING SANITARY MANHOLE
 - EXISTING SANITARY FLOW DIRECTION
 - EXISTING SEWER TO BE REMOVED
 - WV — PROPOSED WATER VALVE
 - PROPOSED WATER SERVICE LATERAL
 - EXISTING WATERMAIN
 - PROPOSED WATER METER
 - EXISTING HYDRANT
 - CB — EXISTING CATCH BASIN
 - ST-MH — EXISTING STORM MANHOLE
 - DCB — EXISTING DOUBLE CATCH BASIN
 - S-MH — EXISTING SANITARY MANHOLE
 - S-MH — EXISTING SANITARY MANHOLE
 - HV — EXISTING HYDRANT
 - WV — EXISTING WATER VALVE
 - VC — EXISTING VALVE CHAMBER
 - — EXISTING BELL BOX
 - — EXISTING CABLE TV BOX
 - — SEWER CROSSING

NOT FOR CONSTRUCTION

SOURCE:
 - TOPOGRAPHIC SURVEY INFORMATION OBTAINED BY MACKAY
 MACKAY & PETERS LIMITED, DRAWING NO. 17-092
 - JOHN WILLIAM BOICH PARLETTE GRADING AND SERVICING
 INFORMATION OBTAINED BY A.J. CLARKE AND ASSOCIATES LTD.
BENCHMARK
 - CITY OF BURLINGTON BENCHMARK NO. 443
 ELEVATION = 152.321m (CGVD-1928: 1978 ADJUSTMENT)
 INFO BM PLACQUE #18102 SET ON TOP OF CONCRETE BOX CULVERT
 LOCATED ON SOUTHEAST CORNER OF APPELBY LINE AND DUNDAS
 STREET.



DESIGN BY: C.CAO CHECKED BY: B. ENTER
 DRAWN BY: C.CAO DATE: 2017-05-24

DATE	BY	DESCRIPTION
2017-06-29	C.C.	FUNCTIONAL SERVICES REPORT
2017-06-29	C.C.	DESCRIPTION

DRAWING ISSUE RECORD

APPROVALS	

IBI GROUP
 200 East Wing-360 James Street North
 Hamilton ON L8L 1H5 Canada
 tel 905 546 1010 fax 905 546 1011
 ibigroup.com

**CITY OF BURLINGTON
 REGION OF HALTON**

**5209 STONEHAVEN DRIVE
 MANTELLA CORPORATION**

GENERAL SERVICING PLAN

FILE NUMBER: 105842 SHEET NUMBER: GSP