

**BUFFER STRIP PLANTING CALCULATIONS:**

BUFFER STRIP AREA = 250 SQM PLANTED  
 C 40 TREES PER 100 SQM = 39.9 TREES  
 C 40 TREES PROPOSED TO BE PLANTED  
 50 PER 100 SQM = 127.5 SHRUBS  
 C 180 SHRUBS PROPOSED TO BE PLANTED

**TERRASSEEDING SPECIFICATION**

BUFFER PLANTING AREA

5% WILD BERGAMOT (MONARDA FISTUCIOSA)  
 5% CANADIAN WILD RIVERGRASS (TRICHARRHENUM SCOPARIUM)  
 10% NEW ENGLAND ASTER (SYMPHYOTRICHUM NOVAE-ANGLIAE)  
 10% CHEERING BENT GRASS (AGROSTIS STOLONIFERA)  
 20% LITTLE BLUESTEM (SCHIZARRHENUM SCOPARIUM)  
 20% CANADIAN WILD RIVERGRASS (TRICHARRHENUM SCOPARIUM)  
 20% KENTUCKY BLUEGRASS (POA PRATENSIS)  
 100% RATE OF APPLICATION: 160 kg PER HECTARE

LANDSOURCE ORGANIX INC.  
 LANDSOURCE ORGANIX INC. WILTON (905) 875-1366

**TRANSITION SOD SPEC:**

TRANSITION SOD SHALL BE INSTALLED OVER 100MM NURSERY GROWN SOD TO BE INSTALLED OVER 100MM NURSERY GROWN SOD TO BE INSTALLED OVER 100MM NURSERY SOD (GROWER ASSOCIATION OF ONTARIO SOD SHALL NOT BE PERMITTED TO DRY OUT BEFORE PLANTING). SOD SHALL BE LAD WITHIN 24 HOURS OF PLANTING. SOD SHALL BE LAD WITHIN 24 HOURS OF PLANTING. SOD SHALL BE LAD WITHIN 24 HOURS OF PLANTING.

**NON NATIVE + INVASIVE SPECIES**

AS PER A REQUEST FROM CONSERVATION HALTON WE WILL NOT PLANT THE NON LOCALLY NATIVE OR ANY INVASIVE SPECIES DESCRIBED BY THE CONSERVATION AUTHORITY WITHIN 15M OF THE REGULATED LANDS.

**LAWN SOD SPEC :**

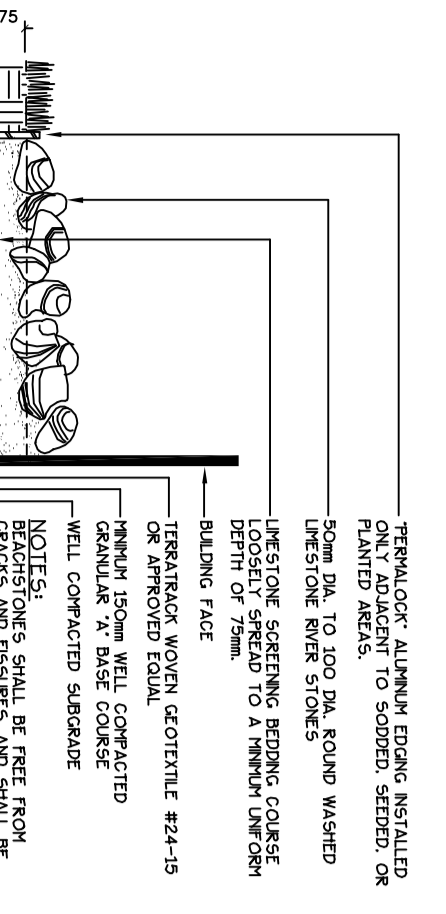
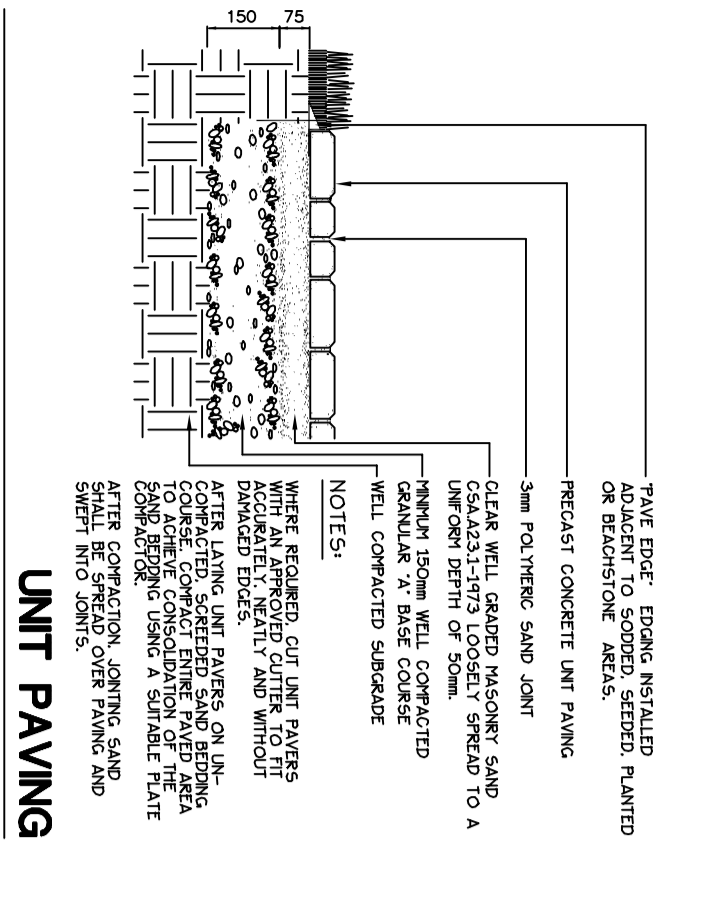
USE NO. 1 KENTUCKY BLUEGRASS AND FESCUE SOD FROM A SEED MIXTURE OF CULTIVARS OF KENTUCKY BLUEGRASS AND FESCUE. THE TURF SHOULD NOT CONTAIN LESS THAN 50% CRYMOR OR KEEPING RED FESCUE CULTIVARS AND NURSERY GROWN SOD TO BE INSTALLED OVER 100MM. (C3) OF CLEAN TOPSOIL AS SPECIFIED BY THE CONSERVATION AUTHORITY SHALL BE PLACED ON TOP OF THE SOD BEFORE PLACEMENT OR TO HEAT UP DUE TO STACKING OR NOT BE EXPOSED TO SUNLIGHT FOR MORE THAN 24 HOURS OF CUTTING.

**TOPSOIL NOTE :**

ALL SOD AND SEED TO BE INSTALLED OVER +150mm (4-6") OF CLEAN TOPSOIL AS SPECIFIED BY THE NURSERY SOD GROWERS ASSOCIATION OF ONTARIO.

**PLANTING NOTE :**

ALL SHRUBS ARE TO BE PLANTED IN CONTINUOUS BEDS. ALL PLANTING BEDS ARE TO BE COVERED WITH A MINIMUM OF 50mm OF SPREADS FINE DARK MULCH. SHRUBS ARE TO BE PLANTED WITH 600mm HIGH WIND PROTECTION.

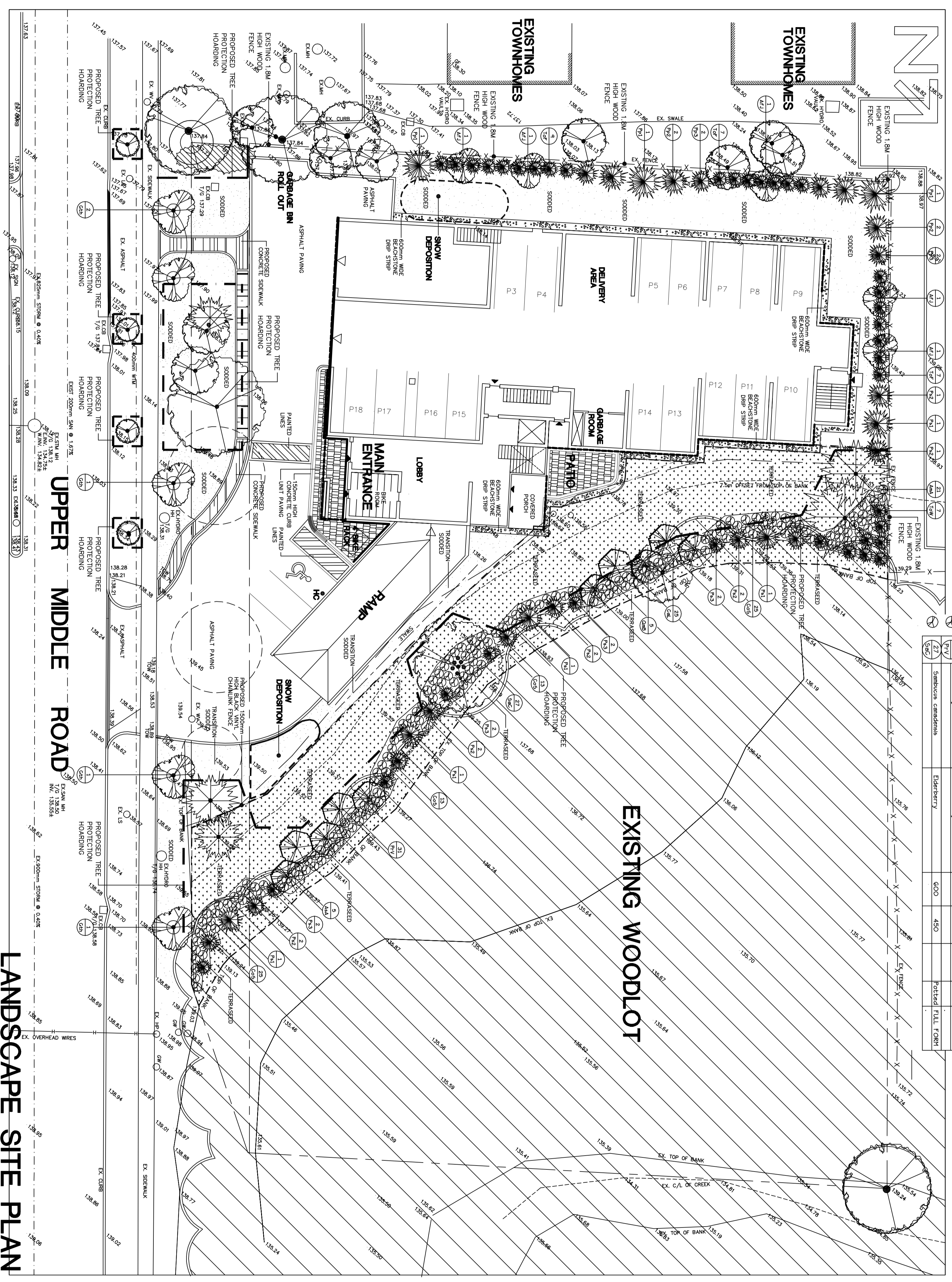
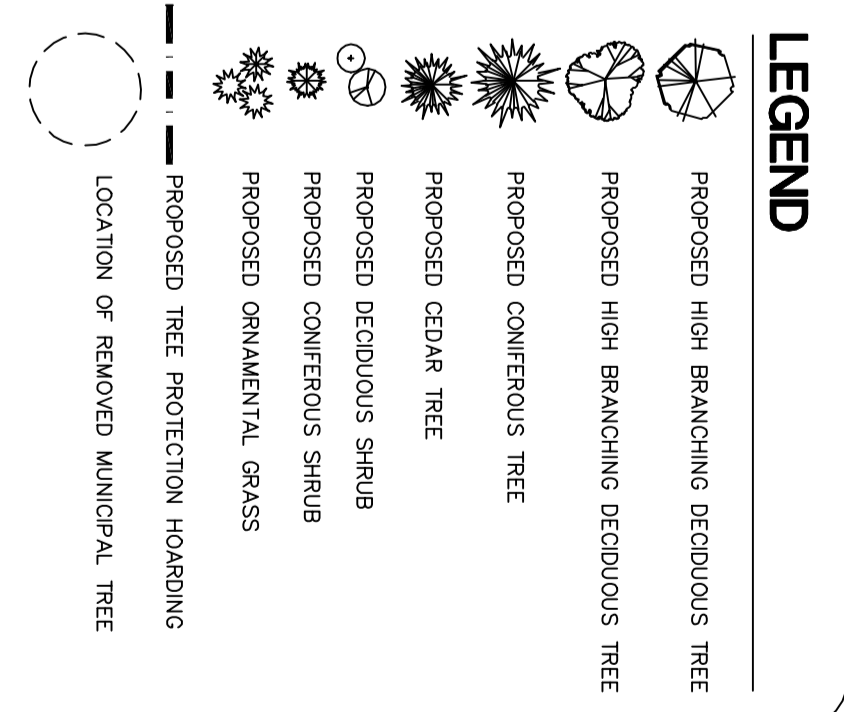


**PLANT LIST (MATERIAL PLANTED 15M BEYOND CONSERVATION LANDS)**

KEY	BOTANICAL NAME	COMMON NAME	HEIGHT	SPREAD	CALIPER	ROOT	REMARKS
1	Acer fraxinifolium	Autumn Blaze Maple	4500	6.0	W.B.	FULL FORM	
2	Quercus tinctoria	Shadblow Honey-locust	4500	6.0	W.B.	FULL FORM	
3	Quercus robur	English Oak	4500	10.0	W.B.	FULL FORM	
4	Ficus religiosa	Godolite Spruce	3000	3.0	W.B.	FULL FORM	
5	Ficus religiosa	Godolite Spruce	2440	3.0	W.B.	FULL FORM	
6	Ficus religiosa	Godolite Spruce	1825	3.0	W.B.	FULL FORM	
7	Thuja occidentalis	Pyramid Cedar	3550	3.0	W.B.	FULL FORM	
8	Thuja occidentalis	Pyramid Cedar	3550	3.0	W.B.	FULL FORM	

**PLANT LIST (MATERIAL PLANTED WITHIN 15M OF CONSERVATION LANDS)**

KEY	BOTANICAL NAME	COMMON NAME	HEIGHT	SPREAD	CALIPER	ROOT	REMARKS
9	Acer saccharinum	Silver Maple	3550	5.0	W.B.	FULL FORM	
10	Carya ovata	Shagbark Hickory	3450	5.0	W.B.	FULL FORM	
11	Quercus macrocarpa	Big Oak	3550	5.0	W.B.	FULL FORM	
12	Ficus religiosa	American Dogwood	3550	5.0	W.B.	FULL FORM	
13	Ficus religiosa	White Pine	1825	3.0	W.B.	FULL FORM	
14	Ficus religiosa	White Pine	1500	3.0	W.B.	FULL FORM	
15	Ficus religiosa	White Pine	1220	3.0	W.B.	FULL FORM	
16	Thuja occidentalis	Eastern White Cedar	1500	3.0	W.B.	FULL FORM	
17	Thuja occidentalis	Eastern White Cedar	1500	3.0	W.B.	FULL FORM	
18	Thuja occidentalis	Eastern White Cedar	1500	3.0	W.B.	FULL FORM	
19	Thuja occidentalis	Eastern White Cedar	1500	3.0	W.B.	FULL FORM	
20	Thuja occidentalis	Eastern White Cedar	1500	3.0	W.B.	FULL FORM	
21	Asplenium platyneuron	Dewey Sparganium	600	4.0	Potted	FULL FORM	
22	Cornus stolonifera	Allegheny-leaf Dogwood	600	4.0	Potted	FULL FORM	
23	Cornus stolonifera	Allegheny-leaf Dogwood	600	4.0	Potted	FULL FORM	
24	Cornus stolonifera	Allegheny-leaf Dogwood	600	4.0	Potted	FULL FORM	
25	Prunella virginiana	Choke Cherry	600	4.0	Potted	FULL FORM	
26	Prunella virginiana	Choke Cherry	600	4.0	Potted	FULL FORM	
27	Prunella virginiana	Choke Cherry	600	4.0	Potted	FULL FORM	
28	Prunella virginiana	Choke Cherry	600	4.0	Potted	FULL FORM	
29	Prunella virginiana	Choke Cherry	600	4.0	Potted	FULL FORM	



**Client**  
100 HAMILTON LTD.

**Designer**  
Think Giffaffe ENVIRONMENTAL DESIGN

**Engineer**  
S. LEWELLYN + ASSOCIATES LIMITED CONSULTING ENGINEERS

**Surveyor**  
GUIDO V. CONSOLI

**Architect / Landscape Architect**  
DEAN FITZGERALD

**LEGEND**

- EXISTING HIGH BRANCHING DECIDUOUS TREE
- EXISTING CONIFEROUS TREE
- EXISTING TREE MASS

**Reviewed by**  
R. REYNOLDS

**Drawn by**  
R.D.R.

**Date**  
AUGUST 2018

**Scale**  
1:200 metric

**Drawing title**  
LANDSCAPE MASTER PLAN

**Drawing number**  
L.2

**Project title**  
PROPOSED RESIDENTIAL BUILDING

**Address**  
4063 UPPER MIDDLE ROAD, BURLINGTON, ONTARIO.

**Project number**  
0705

**reynolds + associates**  
landscape architects  
17 northlawn avenue,  
waterdown, ontario,  
(905) 689-0564